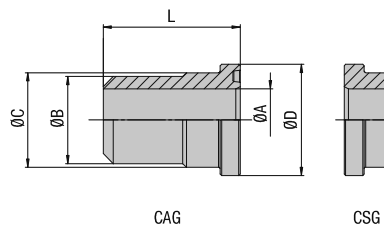


	SAE Butt-Weld Flange Adaptor CAG-ST	24
	SAE Butt-Weld Counterflange Adaptor CSG-ST	24
	SAE Socket-Weld Flange Adaptor CAG-ES	26
	SAE Socket-Weld Counterflange Adaptor CSG-ES	26
	SAE Flange Adaptor with Male BSPT Thread CAG-T	28
	SAE Counterflange Adaptor with Male BSPT Thread CSG-T	28
	SAE Flange Adaptor with Male NPT Thread CAG-N	30
	SAE Counterflange Adaptor with Male NPT Thread CSG-N	30
	SAE Flange Adaptor with Male Metric Thread and 24° Conical Bore (Shape W acc. to DIN 3861) CAG-L/S	32
	SAE 90° Butt-Weld Flange Adaptor CAG90-ST	34
	SAE 90° Flange Adaptor with Male Metric Thread and 24° Conical Bore (Shape W acc. to DIN 3861) CAG90-L/S	36

B


SAE Butt-Weld Flange / Counterflange Adaptor Type CAG/CSG-ST - 3000 PSI Series

B



3000 PSI Standard Pressure Series (according to ISO 6162-1:2002)

Nominal Size		PN ¹ (^{bar} / _{PSI})		Dimensions (^{mm} / _{in})			Ordering Codes
DN	(in)	8.8	10.9 (MH)	ØC	ØD	L	
13	1/2	350	350	24	30,2	41	CAG-301-ST- ** /** -W1
		5075	5075	.94	1.19	1.61	
/ replace with ØB / ØA: 16/12 • 20/15 • 21,3/15,7 • 21,3/13,7 • 21,3/12							
19	3/4	350	350	31,5	38,1	50	CAG-302-ST- ** /** -W1
		5075	5075	1.24	1.50	1.97	
/ replace with ØB / ØA: 25/19 • 26,9/19,7 • 28/19							
25	1	250	315	38	44,45	50	CAG-303-ST- ** /** -W1
		3625	4568	1.50	1.75	1.97	
/ replace with ØB / ØA: 25/19 • 28/22 • 30/24 • 30/22 • 33,7/24,7 • 38/30 • 38/28							
32	1-1/4	200	250	43	50,8	55	CAG-304-ST- ** /** -W1
		2900	3625	1.69	2.00	2.17	
/ replace with ØB / ØA: 25/19 • 30/24 • 38/32 • 38/30 • 38/28 • 42,4/33,4 • 42,4/29,8 • 43/31							
38	1-1/2	200	200	50	60,35	57	CAG-305-ST- ** /** -W1
		2900	2900	1.97	2.38	2.24	
/ replace with ØB / ØA: 38/30 • 42/36 • 42/35 • 42/32 • 45/43 • 48,3/41 • 48,3/38,3 • 48,3/34 • 48,3/35 • 50/38							
51	2	160	200	62	71,4	57	CAG-306-ST- ** /** -W1
		2320	2900	2.44	2.81	2.24	
/ replace with ØB / ØA: 48,3/38,4 • 55/45 • 60,3/54,5 • 60,3/52 • 60,3/50,3 • 60,3/47,7 • 60,3/44,3							
64	2-1/2	100	160	74	84,1	58	CAG-307-ST- ** /** -W1
		1450	2320	2.91	3.31	2.28	
/ replace with ØB / ØA: 65/53 • 70/55 • 74/65 • 74/61,8 • 74/58							
76	3	100	160	90	101,6	60	CAG-308-ST- ** /** -W1
		1450	2320	3.54	4.00	2.36	
/ replace with ØB / ØA: 80/68 • 89/82,5 • 89/81 • 89/76 • 89/74 • 89/70							
89	3-1/2	35	35	102	114,3	80	CAG-309-ST- ** /** -W1
		508	508	4.02	4.50	3.15	
/ replace with ØB / ØA: 100/88 • 89/81,7 • 89/73							
102	4	35	35	114	127	80	CAG-310-ST- ** /** -W1
		508	508	4.49	5.00	3.15	
/ replace with ØB / ØA: 110/98 • 114/107 • 114/102 • 114/96,7							
127	5	35	35	140	152,4	80	CAG-311-ST- ** /** -W1
		508	508	5.51	6.00	3.15	
/ replace with ØB / ØA: 133/120 • 139,7/131,7 • 139,7/119,7							

Materials / Ordering Options / Examples

- * SAE Flange Adaptor (without O-ring) made of Steel S355J0 or equivalent, blank (oiled)
- * SAE Counterflange Adaptor made of Steel S355J0 or equivalent, blank (oiled)
- * SAE Flange Adaptor (without O-ring) made of Stainless Steel V4A – 1.4404 (on request)

CAG-...-ST- ** /** -W1
CSG-...-ST- ** /** -W1
CAG-...-ST- ** /** -W5

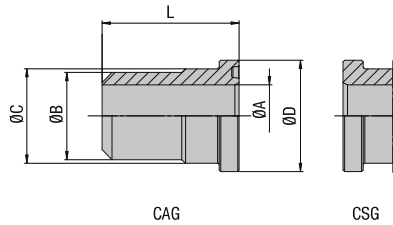
- * Kit with DB including Metric bolts 8.8, spring rings, O-ring made of NBR (Buna-N®)
- * Kit with DB including Metric bolts 8.8, spring rings, O-ring made of FKM (Viton®)
- * Kit with DB including Metric bolts 10.9, spring rings, O-ring made of NBR (Buna-N®)
- * Kit with DB including UNC bolts (Grade 8), spring rings, O-ring made of NBR (Buna-N®)
- * Kit with BM including Metric bolts 8.8, spring rings, O-ring made of NBR (Buna-N®)

CAG-...-ST- ** /** -W57-K
CAG-...-ST- ** /** -V-W57-K
CAG-...-ST- ** /** -MH-W129-K
CAG-...-ST- ** /** -U-W129-K
CAG-...-ST- ** /** -BM-W57-K

Please always indicate ØB / ØA.

¹ The maximum working pressure PN (bar/PSI) applies only to the flange itself and depends on the bolts used (Grade 8.8 / 10.9). The actual maximum working pressure depends on the thickness and the quality of the tube used.



SAE Butt-Weld Flange / Counterflange Adaptor
 Type CAG/CSG-ST ■ 6000 PSI Series


B

6000 PSI High Pressure Series (according to ISO 6162-2:2002)

Nominal Size	PN ¹ (^{bar} /PSI)	Dimensions (^{mm} / ⁱⁿ)					Ordering Codes
DN	(in)	8.8	10.9 (MH)	ØC	ØD	L	
13	1/2	350	420	24	31,8	34	CAG-601-ST-**-**-W1
		5075	6090	.94	1.25	1.34	
/ replace with ØB / ØA: 16/12 • 20/15 • 21,3/12,3							
19	3/4	350	420	32	41,3	38	CAG-602-ST-**-**-W1
		5075	6090	1.26	1.63	1.50	
/ replace with ØB / ØA: 16/12 • 20/14 • 25/19 • 25/18 • 25/17 • 26,9/15,7 • 28/18							
25	1	350	420	38	47,6	40	CAG-603-ST-**-**-W1
		5075	6090	1.50	1.87	1.57	
/ replace with ØB / ØA: 25/19 • 30/24 • 30/22 • 33,7/21 • 33,7/19,5 • 38/30 • 38/28							
32	1-1/4	350	420	44	54	45	CAG-604-ST-**-**-W1 ²
		5075	6090	1.73	2.13	1.77	
/ replace with ØB / ØA: 25/19 • 30/24 • 38/30 • 38/28 • 38/27 • 42,4/29,8							
38	1-1/2	350	420	51	63,5	50	CAG-605-ST-**-**-W1
		5075	6090	2.01	2.50	1.97	
/ replace with ØB / ØA: 38/28 • 45/32 • 48,3/38,3 • 48,3/35,7 • 48,3/34 • 48,3/32,3 • 48,3/30,7 • 50/38 • 51/35							
51	2	350	420	67	79,4	58	CAG-606-ST-**-**-W1
		5075	6090	2.64	3.13	2.28	
/ replace with ØB / ØA: 48,3/35,7 • 60,3/47,7 • 60,3/44,3 • 60,3/42,8 • 60,3/40,3 • 60,3/33,5 • 65 /39							
64	2-1/2	350	420	89	108	75	CAG-607-ST-**-**-W1
		5075	6090	3.50	4.25	2.95	
/ replace with ØB / ØA: 76,1/60 • 76,1/56 • 89/69 • 89/67 • 89/60,5							
76	3	350	420	114	131,6	80	CAG-608-ST-**-**-W1
		5075	6090	4.49	5.18	3.15	
/ replace with ØB / ØA: 89/69 • 89/66,7 • 89/60,5 • 114/92,3 • 114/79,3							

¹ The maximum working pressure PN (bar/PSI) applies only to the flange itself and depends on the bolts used (Grade 8.8 / 10.9). The actual maximum working pressure depends on the thickness and the quality of the tube used.

² According to ISO 6162-2 bolts M12 should be used but because usually bolts M14 are used the description of the complete part must show M14 (e.g. CAG-604-ST-**-**-M14#K).

Materials / Ordering Options / Examples

- * SAE Flange Adaptor (without O-ring) made of Steel S355J0 or equivalent, blank (oiled) **CAG-...-ST-**-**-W1**
- * SAE Counterflange Adaptor made of Steel S355J0 or equivalent, blank (oiled) **CSG-...-ST-**-**-W1**
- * SAE Flange Adaptor (without O-ring) made of Stainless Steel V4A – 1.4404 (on request) **CAG-...-ST-**-**-W5**

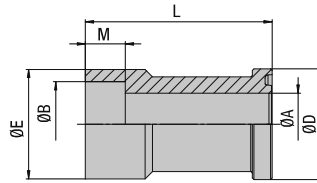
- * Kit with DB including Metric bolts 8.8, spring rings, O-ring made of NBR (Buna-N®) **CAG-...-ST-**-**-W57-K**
- * Kit with DB including Metric bolts 8.8, spring rings, O-ring made of FKM (Viton®) **CAG-...-ST-**-**-V-W57-K**
- * Kit with DB including Metric bolts 10.9, spring rings, O-ring made of NBR (Buna-N®) **CAG-...-ST-**-**-MH-W129-K**
- * Kit with DB including UNC bolts (Grade 8), spring rings, O-ring made of NBR (Buna-N®) **CAG-...-ST-**-**-U-W129-K**
- * Kit with BM including Metric bolts 8.8, spring rings, O-ring made of NBR (Buna-N®) **CAG-...-ST-**-**-BM-W57-K**

Please always indicate ØB / ØA.

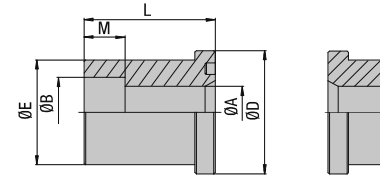


**SAE Socket-Weld Flange / Counterflange Adaptor
Type CAG/CSG-ES - 3000 PSI Series**

B



Version A (CAG) - not for use with SAE Flange Clamps BM



Version B (CAG / CSG)

3000 PSI Standard Pressure Series (according to ISO 6162-1:2002)

Nominal Size	PN ¹ (^{bar} / _{PSI})	Dimensions (^{mm} / _{in})								Version	Weight (^{kg} / _{lbs}) ca. per 100	Ordering Codes
		DN	(in)	8.8	10.9 (MH)	ØA	ØB	ØD	ØE			
13	1/2	350	350	12	16,5	30,2	24	12	35	B	11,0	CAG-301-ES-16.5/12-W1
		5075	5075	.47	.65	1.19	.94	.47	1.38		24.20	
13	1/2	350	350	12	17,6	30,2	24	12	35	B	99,0	CAG-301-ES-17.6/12-W1
		5075	5075	.47	.69	1.19	.94	.47	1.38		217.80	
13	1/2	350	350	15	20,5	30,2	30	13	60	A	15,7	CAG-301-ES-20.5/15-W1
		5075	5075	.59	.81	1.19	1.18	.51	2.36		34.54	
13	1/2	350	350	15	21,7	30,2	30	13	60	A	15,8	CAG-301-ES-21.7/15-W1
		5075	5075	.59	.85	1.19	1.18	.51	2.36		34.76	
19	3/4	350	350	13	20,5	38,1	31,5	12	40	B	18,4	CAG-302-ES-20.5/13-W1
		5075	5075	.51	.81	1.50	1.24	.47	1.57		40.49	
19	3/4	350	350	13	21,7	38,1	31,5	13	40	B	18,4	CAG-302-ES-21.7/13-W1
		5075	5075	.51	.85	1.50	1.24	.51	1.57		40.49	
19	3/4	350	350	19	25,5	38,1	35	13	68	A	28,2	CAG-302-ES-25.5/19-W1
		5075	5075	.75	1.00	1.50	1.38	.51	2.68		62.04	
19	3/4	350	350	19	27,3	38,1	35	13	68	A	27,1	CAG-302-ES-27.3/19-W1
		5075	5075	.75	1.07	1.50	1.38	.51	2.68		59.62	
25	1	250	315	19	27,3	44,45	38	14	45	B	40,0	CAG-303-ES-27.3/19-W1
		3625	4568	.75	1.07	1.75	1.50	.55	1.77		88.00	
25	1	250	315	23	30,5	44,45	44	16	75	A	46,1	CAG-303-ES-30.5/23-W1
		3625	4568	.91	1.20	1.75	1.73	.63	2.95		101.42	
25	1	250	315	25	34	44,45	44	16	75	A	46,0	CAG-303-ES-34/25-W1
		3625	4568	.98	1.34	1.75	1.73	.63	2.95		101.20	
32	1-1/4	200	250	25	30,5	50,8	43	16	50	B	36,0	CAG-304-ES-30.5/25-W1
		2900	3625	.98	1.20	2.00	1.69	.63	1.97		79.20	
32	1-1/4	200	250	25	34	50,8	43	16	50	B	32,0	CAG-304-ES-34/25-W1
		2900	3625	.98	1.34	2.00	1.69	.63	1.97		70.40	
32	1-1/4	200	250	32	38,5	50,8	55	18	95	A	64,0	CAG-304-ES-38.5/32-W1
		2900	3625	1.26	1.52	2.00	2.17	.71	3.74		140.80	
32	1-1/4	200	250	32	43	50,8	55	18	95	A	60,0	CAG-304-ES-43/32-W1
		2900	3625	1.26	1.69	2.00	2.17	.71	3.74		132.00	
38	1-1/2	200	200	32	38,5	60,3	50	18	55	B	44,0	CAG-305-ES-38.5/32-W1
		2900	2900	1.26	1.52	2.37	1.97	.71	2.17		96.80	
38	1-1/2	200	200	32	43	60,3	50	18	55	B	46,0	CAG-305-ES-43/32-W1
		2900	2900	1.26	1.69	2.37	1.97	.71	2.17		101.20	
38	1-1/2	200	200	38	49	60,3	63	20	100	A	82,5	CAG-305-ES-49/38-W1
		2900	2900	1.50	1.93	2.37	2.48	.79	3.94		181.50	
38	1-1/2	200	200	38	50,4	60,3	63	20	100	A	80,9	CAG-305-ES-50.4/38-W1
		2900	2900	1.50	1.98	2.37	2.48	.79	3.94		177.98	
51	2	160	200	38	49	71,4	61,8	20	65	B	174,0	CAG-306-ES-49/38-W1
		2320	2900	1.50	1.93	2.81	2.43	.79	2.56		382.80	
51	2	160	200	38	50,7	71,4	61,8	20	65	B	174,0	CAG-306-ES-50.7/38-W1
		2320	2900	1.50	2.00	2.81	2.43	.79	2.56		382.80	
51	2	160	200	50	61	71,4	79	22	107	A	119,7	CAG-306-ES-61/50-W1
		2320	2900	1.97	2.40	2.81	3.11	.87	4.21		263.34	

Materials / Ordering Options / Examples

- * SAE Flange Adaptor (without O-ring) made of Steel S355J0 or equivalent, blank (oiled)
- * SAE Counterflange Adaptor made of Steel S355J0 or equivalent, blank (oiled)
- * SAE Flange Adaptor (without O-ring) made of Stainless Steel V4A – 1.4404 (on request)

CAG-...-ES--**-W1**
CSG-...-ES--**-W1**
CAG-...-ES--**-W5**

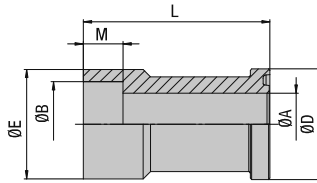
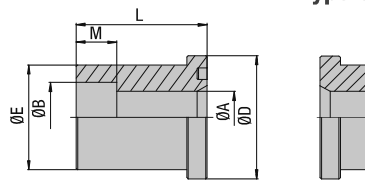
- * Kit with DB including Metric bolts 8.8, spring rings, O-ring made of NBR (Buna-N®)
- * Kit with DB including Metric bolts 8.8, spring rings, O-ring made of FKM (Viton®)
- * Kit with DB including Metric bolts 10.9, spring rings, O-ring made of NBR (Buna-N®)
- * Kit with DB including UNC bolts (Grade 8), spring rings, O-ring made of NBR (Buna-N®)

CAG-...-ES--**-W57-K**
CAG-...-ES--**-V-W57-K**
CAG-...-ES--**-MH-W129-K**
CAG-...-ES--**-U-W129-K**

Please always indicate ØB / ØA.

¹ The maximum working pressure PN (bar/PSI) applies only to the flange itself and depends on the bolts used (Grade 8.8 / 10.9). The actual maximum working pressure depends on the thickness and the quality of the tube used.



**SAE Socket-Weld Flange / Counterflange Adaptor
Type CAG/CSG-ES - 3000 / 6000 PSI Series**

Version A (CAG) - not for use with SAE Flange Clamps BM

Version B (CAG / CSG)

B
3000 PSI Standard Pressure Series (according to ISO 6162-1:2002)

Nominal Size	PN ¹ (^{bar} / ^{psi})	Dimensions (^{mm} / ⁱⁿ)								Version	Weight (^{kg} / ^{lbs}) ca. per 100	Ordering Codes
		8.8	10.9 (MH)	ØA	ØB	ØD	ØE	M	L			
64	2-1/2	100	160	47	61	84,1	73,8	22	75	B	79,0	CAG-307-ES-61/47-W1
		1450	2320	1.85	2.40	3.31	2.91	.87	2.95		173.80	
64	2-1/2	100	160	58	77	84,1	98	24	130	A	215,9	CAG-307-ES-77/58-W1
		1450	2320	2.28	3.03	3.31	3.86	.94	5.12		474.98	
76	3	100	160	58	77	101,6	90	24	85	B	108,0	CAG-308-ES-77/58-W1
		1450	2320	2.28	3.03	4.00	3.54	.94	3.35		237.60	
76	3	100	160	70	90,5	101,6	116	28	150	A	372,0	CAG-308-ES-90.5/70-W1
		1450	2320	2.76	3.56	4.00	4.57	1.10	5.91		818.40	

6000 PSI High Pressure Series (according to ISO 6162-2:2002)

Nominal Size	PN ¹ (^{bar} / ^{psi})	Dimensions (^{mm} / ⁱⁿ)								Version	Weight (^{kg} / ^{lbs}) ca. per 100	Ordering Codes
		8.8	10.9 (MH)	ØA	ØB	ØD	ØE	M	L			
13	1/2	350	420	11	16,5	31,8	24	13	35	B	12,5	CAG-601-ES-16.5/11-W1
		5075	6090	.43	.65	1.25	.94	.51	1.38		27.48	
13	1/2	350	420	11	17,6	31,8	24	13	35	B	12,5	CAG-601-ES-17.6/11-W1
		5075	6090	.43	.69	1.25	.94	.51	1.38		27.48	
13	1/2	350	420	15	20,5	31,8	32	13	60	A	19,7	CAG-601-ES-20.5/15-W1
		5075	6090	.59	.81	1.25	1.26	.51	2.36		43.34	
13	1/2	350	420	15	21,7	31,8	32	13	60	A	18,8	CAG-601-ES-21.7/15-W1
		5075	6090	.59	.85	1.25	1.26	.51	2.36		41.36	
19	3/4	350	420	13	20,5	41,3	31,8	13	40	B	19,0	CAG-602-ES-20.5/13-W1
		5075	6090	.51	.81	16.26	1.25	.51	1.57		41.80	
19	3/4	350	420	13	21,7	41,3	31,8	13	40	B	20,1	CAG-602-ES-20.5/15-W1
		5075	6090	.51	.85	16.26	1.25	.51	1.57		44.22	
19	3/4	350	420	19	25,7	41,3	40	13	68	A	36,1	CAG-602-ES-25.5/19-W1
		5075	6090	.75	1.01	1.63	1.57	.51	2.68		79.42	
19	3/4	350	420	19	27,3	41,3	40	13	68	A	35,4	CAG-602-ES-27.3/19-W1
		5075	6090	.75	1.07	1.63	1.57	.51	2.68		77.88	
25	1	350	420	17,5	27,3	47,6	38	13	45	B	35,9	CAG-603-ES-27.3/17.5-W1
		5075	6090	.69	1.07	1.87	1.50	.51	1.77		79.04	
25	1	350	420	25	34	47,6	48	16	75	A	48,0	CAG-603-ES-34/25-W1
		5075	6090	.98	1.34	1.87	1.89	.63	2.95		105.60	
32	1-1/4	350	420	22	34	54	44	16	50	B	52,4	CAG-604-ES-34/22-W1 ²
		5075	6090	.87	1.34	2.13	1.73	.63	1.97		115.28	

¹ The maximum working pressure PN (bar/PSI) applies only to the flange itself and depends on the bolts used (Grade 8.8 / 10.9). The actual maximum working pressure depends on the thickness and the quality of the tube used.

² According to ISO 6162-2 bolts M12 should be used. Since typically bolts M14 are used, the description of the complete part must show M14 (e.g. CAG-604-ES-34/22-M14-W57-K).

Materials / Ordering Options / Examples

- * SAE Flange Adaptor (without O-ring) made of Steel S355J0 or equivalent, blank (oiled)
- * SAE Counterflange Adaptor made of Steel S355J0 or equivalent, blank (oiled)
- * SAE Flange Adaptor (without O-ring) made of Stainless Steel V4A – 1.4404 (on request)

CAG-...-ES-**-**/**-W1
CSG-...-ES-**-**/**-W1
CAG-...-ES-**-**/**-W5

- * Kit with DB including Metric bolts 8.8, spring rings, O-ring made of NBR (Buna-N®)
- * Kit with DB including Metric bolts 8.8, spring rings, O-ring made of FKM (Viton®)
- * Kit with DB including Metric bolts 10.9, spring rings, O-ring made of NBR (Buna-N®)
- * Kit with DB including UNC bolts (Grade 8), spring rings, O-ring made of NBR (Buna-N®)

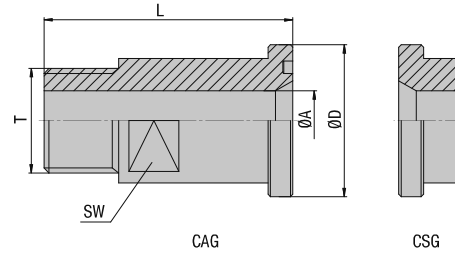
CAG-...-ES-**-**/**-W57-K
CAG-...-ES-**-**/**-V-W57-K
CAG-...-ES-**-**/**-MH-W129-K
CAG-...-ES-**-**/**-U-W129-K

Please always indicate ØB / ØA.



SAE Flange / Counterflange Adaptor with Male BSPT Thread Type CAG/CSG-T - 3000 PSI Series

B



3000 PSI Standard Pressure Series (according to ISO 6162-1:2002)

Nominal Size	PN ¹ (^{bar} / ^{PSI})	Dimensions (^{mm} / ⁱⁿ)				L	SW	T (BSPT)	Weight (^{kg} / ^{lbs}) ca. per 100	Ordering Codes
		8.8	10.9 (MH)	ØA	ØD					
13	1/2	300	300	12	30,2	50	19	1/2	13,0	CAG-301-T-W66
		4350	4350	.47	1.19	1.97	.75		28.60	
13	1/2	300	300	10	30,2	50	19	3/8 (06)	13,0	CAG-301-T06-W66
		4350	4350	.39	1.19	1.97	.75		28.60	
19	3/4	300	300	17	38,1	55	27	3/4	18,2	CAG-302-T-W66
		4350	4350	.67	1.50	2.17	1.06		40.04	
19	3/4	300	300	12	38,1	55	27	1/2 (08)	18,2	CAG-302-T08-W66
		4350	4350	.47	1.50	2.17	1.06		40.04	
25	1	300	300	22	44,45	60	32	1	40,0	CAG-303-T-W66
		4350	4350	.87	1.75	2.36	1.26		88.00	
25	1	300	300	17	44,45	60	32	3/4 (12)	40,0	CAG-303-T12-W66
		4350	4350	.67	1.75	2.36	1.26		88.00	
32	1-1/4	150	150	27	50,8	65	41	1-1/4	43,7	CAG-304-T-W66
		2175	2175	1.06	2.00	2.56	1.61		96.14	
32	1-1/4	150	150	22	50,8	65	41	1 (16)	44,0	CAG-304-T16-W66
		2175	2175	.87	2.00	2.56	1.61		96.80	
38	1-1/2	150	150	32	60,3	70	46	1-1/2	61,5	CAG-305-T-W66
		2175	2175	1.26	2.37	2.76	1.81		135.30	
38	1-1/2	150	150	27	60,3	70	46	1-1/4 (20)	61,5	CAG-305-T20-W66
		2175	2175	1.06	2.37	2.76	1.81		135.30	
51	2	150	150	40	71,4	75	55	2	100,7	CAG-306-T-W66
		2175	2175	1.57	2.81	2.95	2.17		221.54	
51	2	150	150	30	71,4	75	55	1-1/2 (24)	45,0	CAG-306-T24-W66
		2175	2175	1.18	2.81	2.95	2.17		99.00	

Materials / Ordering Options / Examples

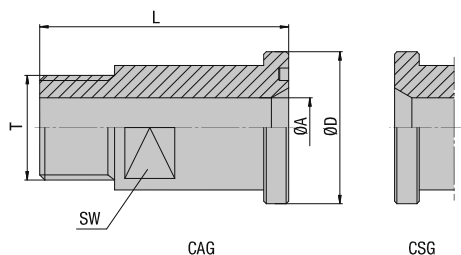
- * SAE Flange Adaptor (without O-ring) made of Steel S355J0 or equivalent, zinc-plated and thick-film-passivated **CAG-...-T-W66**
- * SAE Counterflange Adaptor made of Steel S355J0 or equivalent, zinc-plated and thick-film-passivated **CSG-...-T-W66**
- * SAE Flange Adaptor (without O-ring) made of Stainless Steel V4A – 1.4404 (on request) **CAG-...-T-W5**

- * Size of connection thread deviating from the standard (e.g. 1/2 BSPT) **CAG-...-T08-W66**

- * Kit with DB including Metric bolts 8.8, spring rings, O-ring made of NBR (Buna-N®) **CAG-...-T-W66-K**
- * Kit with DB including Metric bolts 8.8, spring rings, O-ring made of FKM (Viton®) **CAG-...-T-V-W66-K**
- * Kit with DB including Metric bolts 10.9, spring rings, O-ring made of NBR (Buna-N®) **CAG-...-T-MH-W130-K**
- * Kit with DB including UNC bolts (Grade 8), spring rings, O-ring made of NBR (Buna-N®) **CAG-...-T-U-W130-K**

¹ The maximum working pressure PN (bar/PSI) applies only to the flange itself and depends on the bolts used (Grade 8.8 / 10.9). The actual maximum working pressure depends on the thickness and the quality of the tube used.



**SAE Flange / Counterflange Adaptor with Male BSPT Thread
Type CAG/CSG-BSPT - 6000 PSI Series**

B
6000 PSI High Pressure Series (according to ISO 6162-2:2002)

Nominal Size	PN ¹ (^{bar} / ^{psi})	Dimensions (^{mm} / ⁱⁿ)				L	SW	T (BSPT)	Weight (^{kg} / ^{lbs}) ca. per 100	Ordering Codes
		8.8	10.9 (MH)	ØA	ØD					
13	1/2	350	350	12	31,8	50	19	1/2	12,5	CAG-601-T-W66
		5075	5075	.47	1.25	1.97	.75		27,48	
13	1/2	350	350	10	31,8	50	19	3/8 (06)	12,5	CAG-601-T06-W66
		5075	5075	.39	1.25	1.97	.75		27,48	
19	3/4	350	350	17	41,3	60	26	3/4	23,4	CAG-602-T-W66
		5075	5075	.67	1.63	2.36	1.02		51,51	
19	3/4	350	350	12	41,3	60	26	1/2 (08)	23,4	CAG-602-T08-W66
		5075	5075	.47	1.63	2.36	1.02		51,51	
25	1	350	350	22	47,6	70	32	1	35,9	CAG-603-T-W66
		5075	5075	.87	1.87	2.76	1.26		79,04	
25	1	350	350	17	47,6	70	32	3/4 (12)	35,9	CAG-603-T12-W66
		5075	5075	.67	1.87	2.76	1.26		79,04	
32	1-1/4	250	250	27	54	75	36	1-1/4	52,4	CAG-604-T-W66 ²
		3625	3625	1.06	2.13	2.95	1.42		115,28	
32	1-1/4	250	250	22	54	75	36	1 (16)	52,4	CAG-604-T16-W66
		3625	3625	.87	2.13	2.95	1.42		115,28	
38	1-1/2	250	250	30	63,5	80	41	1-1/2	76,0	CAG-605-T-W66
		3625	3625	1.18	2.50	3.15	1.61		167,20	
38	1-1/2	250	250	27	63,5	80	41	1-1/4 (20)	76,0	CAG-605-T20-W66
		3625	3625	1.06	2.50	3.15	1.61		167,20	
51	2	200	200	40	79,4	90	55	2	141,8	CAG-606-T-W66
		2900	2900	1.57	3.13	3.54	2.17		311,96	
51	2	200	200	30	79,4	90	55	1-1/2 (24)	141,8	CAG-606-T24-W66
		2900	2900	1.18	3.13	3.54	2.17		311,96	

¹ The maximum working pressure PN (bar/PSI) applies only to the flange itself and depends on the bolts used (Grade 8.8 / 10.9). The actual maximum working pressure depends on the thickness and the quality of the tube used.

² According to ISO 6162-2 bolts M12 should be used but because usually bolts M14 are used the description of the complete part must show M14 (e.g. CAG-604-T-***-M14#K).

Materials / Ordering Options / Examples

- * SAE Flange Adaptor (without O-ring) made of Steel S355J0 or equivalent, zinc-plated and thick-film-passivated **CAG-...-T-W66**
- * SAE Counterflange Adaptor made of Steel S355J0 or equivalent, zinc-plated and thick-film-passivated **CSG-...-T-W66**
- * SAE Flange Adaptor (without O-ring) made of Stainless Steel V4A – 1.4404 (on request) **CAG-...-T-W5**

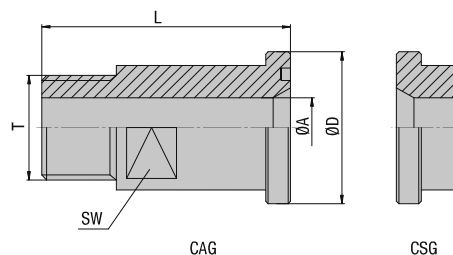
- * Size of connection thread deviating from the standard (e.g. 1/2 BSPT) **CAG-...-T08-W66**

- * Kit with DB including Metric bolts 8.8, spring rings, O-ring made of NBR (Buna-N®) **CAG-...-T-W66-K**
- * Kit with DB including Metric bolts 8.8, spring rings, O-ring made of FKM (Viton®) **CAG-...-T-V-W66-K**
- * Kit with DB including Metric bolts 10.9, spring rings, O-ring made of NBR (Buna-N®) **CAG-...-T-MH-W130-K**
- * Kit with DB including UNC bolts (Grade 8), spring rings, O-ring made of NBR (Buna-N®) **CAG-...-T-U-W130-K**



SAE Flange / Counterflange Adaptor with Male NPT Thread Type CAG/CSG-N - 3000 PSI Series

B



3000 PSI Standard Pressure Series (according to ISO 6162-1:2002)

Nominal Size	PN ¹ (^{bar} /PSI)	Dimensions (mm/in)				L	SW	T (NPT)	Weight (^{kg} /lbs) ca. per 100	Ordering Codes
		8.8	10.9 (MH)	ØA	ØD					
13	1/2	300	300	12	30,2	50	19	1/2	13,0	CAG-301-N-W66
		4350	4350	.47	1.19	1.97	.75		28.60	
13	1/2	300	300	10	30,2	50	19	3/8 (06)	13,0	CAG-301-N06-W66
		4350	4350	.39	1.19	1.97	.75		28.60	
19	3/4	300	300	17	38,1	55	27	3/4	23,0	CAG-302-N-W66
		4350	4350	.67	1.50	2.17	1.06		50.60	
19	3/4	300	300	12	38,1	55	27	1/2 (08)	23,0	CAG-302-N08-W66
		4350	4350	.47	1.50	2.17	1.06		50.60	
25	1	300	300	22	44,45	60	32	1	28,0	CAG-303-N-W66
		4350	4350	.87	1.75	2.36	1.26		61.60	
25	1	300	300	17	44,45	60	32	3/4 (12)	28,0	CAG-303-N12-W66
		4350	4350	.67	1.75	2.36	1.26		61.60	
32	1-1/4	150	150	27	50,8	65	41	1-1/4	79,0	CAG-304-N-W66
		2175	2175	1.06	2.00	2.56	1.61		173.80	
32	1-1/4	150	150	22	50,8	65	41	1 (16)	79,0	CAG-304-N16-W66
		2175	2175	.87	2.00	2.56	1.61		173.80	
38	1-1/2	150	150	32	60,3	70	46	1-1/2	62,0	CAG-305-N-W66
		2175	2175	1.26	2.37	2.76	1.81		136.40	
38	1-1/2	150	150	27	60,3	70	46	1-1/4 (20)	62,0	CAG-305-N20-W66
		2175	2175	1.06	2.37	2.76	1.81		136.40	
51	2	150	150	40	71,4	75	55	2	95,8	CAG-306-N-W66
		2175	2175	1.57	2.81	2.95	2.17		210.76	
51	2	150	150	30	71,4	75	55	1-1/2 (24)	171,6	CAG-306-N24-W66
		2175	2175	1.18	2.81	2.95	2.17		377.52	

Materials / Ordering Options / Examples

* SAE Flange Adaptor (without O-ring) made of Steel S355J0 or equivalent, zinc-plated and thick-film-passivated **CAG-...-N-W66**

* SAE Counterflange Adaptor made of Steel S355J0 or equivalent, zinc-plated and thick-film-passivated **CSG-...-N-W66**

* SAE Flange Adaptor (without O-ring) made of Stainless Steel V4A – 1.4404 (on request) **CAG-...-N-W5**

* Size of connection thread deviating from the standard (e.g. 1/2 NPT) **CAG-...-N08-W66**

* Kit with DB including Metric bolts 8.8, spring rings, O-ring made of NBR (Buna-N®) **CAG-...-N-W66-K**

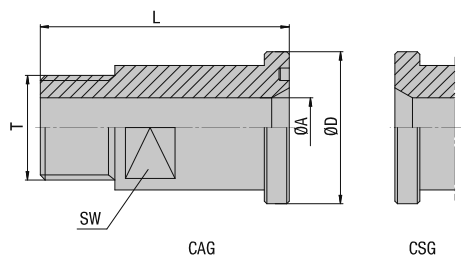
* Kit with DB including Metric bolts 8.8, spring rings, O-ring made of FKM (Viton®) **CAG-...-N-V-W66-K**

* Kit with DB including Metric bolts 10.9, spring rings, O-ring made of NBR (Buna-N®) **CAG-...-N-MH-W130-K**

* Kit with DB including UNC bolts (Grade 8), spring rings, O-ring made of NBR (Buna-N®) **CAG-...-N-U-W130-K**

¹ The maximum working pressure PN (bar/PSI) applies only to the flange itself and depends on the bolts used (Grade 8.8 / 10.9). The actual maximum working pressure depends on the thickness and the quality of the tube used.



SAE Flange Adaptor / Counterflange with Male NPT Thread
 Type CAG/CSG-NPT - 6000 PSI Series

B

6000 PSI High Pressure Series (according to ISO 6162-2:2002)

Nominal Size	PN ¹ (^{bar} / ^{psi})	Dimensions (^{mm} / ⁱⁿ)				L	SW	T (NPT)	Weight (^{kg} / ^{lbs}) ca. per 100	Ordering Codes
		8.8	10.9 (MH)	ØA	ØD					
13	1/2	350	350	12	31,8	50	19	1/2	13,0	CAG-601-N-W66
		5075	5075	.47	1.25	1.97	.75		28.60	
13	1/2	350	350	10	31,8	50	19	3/8 (06)	13,0	CAG-601-N06-W66
		5075	5075	.39	1.25	1.97	.75		28.60	
19	3/4	350	350	17	41,3	60	26	3/4	23,0	CAG-602-N-W66
		5075	5075	.67	1.63	2.36	1.02		50.60	
19	3/4	350	350	12	41,3	60	26	1/2 (08)	23,0	CAG-602-N08-W66
		5075	5075	.47	1.63	2.36	1.02		50.60	
25	1	350	350	22	47,6	70	32	1	55,6	CAG-603-N-W66
		5075	5075	.87	1.87	2.76	1.26		122.32	
25	1	350	350	17	47,6	70	32	3/4 (12)	55,6	CAG-604-N12-W66
		5075	5075	.67	1.87	2.76	1.26		122.32	
32	1-1/4	250	250	27	54	75	36	1-1/4	56,6	CAG-604-N-W66 ²
		3625	3625	1.06	2.13	2.95	1.42		124.46	
32	1-1/4	250	250	22	54	75	36	1 (16)	56,6	CAG-604-N16-W66
		3625	3625	.87	2.13	2.95	1.42		124.46	
38	1-1/2	250	250	30	63,5	80	41	1-1/2	76,7	CAG-605-N-W66
		3625	3625	1.18	2.50	3.15	1.61		168.74	
38	1-1/2	250	250	27	63,5	80	41	1-1/4 (20)	83,2	CAG-605-N20-W66
		3625	3625	1.06	2.50	3.15	1.61		183.03	
51	2	200	200	40	79,4	90	55	2	174,6	CAG-606-N-W66
		2900	2900	1.57	3.13	3.54	2.17		384.12	
51	2	200	200	30	79,4	90	55	1-1/2 (24)	174,6	CAG-606-N24-W66
		2900	2900	1.18	3.13	3.54	2.17		384.12	

¹ The maximum working pressure PN (bar/PSI) applies only to the flange itself and depends on the bolts used (Grade 8.8 / 10.9). The actual maximum working pressure depends on the thickness and the quality of the tube used.

² According to ISO 6162-2 bolts M12 should be used but because usually bolts M14 are used the description of the complete part must show M14 (e.g. CAG-604-N-*/**/M14#K).

Materials / Ordering Options / Examples

- * SAE Flange Adaptor (without O-ring) made of Steel S355J0 or equivalent, zinc-plated and thick-film-passivated **CAG-...-N-W66**
- * SAE Counterflange Adaptor made of Steel S355J0 or equivalent, zinc-plated and thick-film-passivated **CSG-...-N-W66**
- * SAE Flange Adaptor (without O-ring) made of Stainless Steel V4A – 1.4404 (on request) **CAG-...-N-W5**

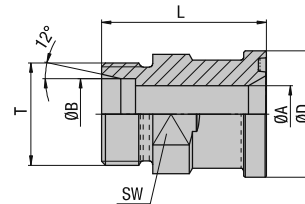
- * Size of connection thread deviating from the standard (e.g. 1/2 NPT) **CAG-...-N08-W66**

- * Kit with DB including Metric bolts 8.8, spring rings, O-ring made of NBR (Buna-N®) **CAG-...-N-W66-K**
- * Kit with DB including Metric bolts 8.8, spring rings, O-ring made of FKM (Viton®) **CAG-...-N-V-W66-K**
- * Kit with DB including Metric bolts 10.9, spring rings, O-ring made of NBR (Buna-N®) **CAG-...-N-MH-W130-K**
- * Kit with DB including UNC bolts (Grade 8), spring rings, O-ring made of NBR (Buna-N®) **CAG-...-N-U-W130-K**



SAE Flange Adaptor with Male Metric Thread and 24° Conical Bore (acc. to ISO 8434-1) Type CAG-L/S - 3000 PSI Series

B



3000 PSI Standard Pressure Series (according to ISO 6162-1:2002)

Nominal Size	PN ¹ (^{bar} / _{PSI})	Dimensions (^{mm} / _{in})				Series	ØD	L	SW	T (Metric)	Weight (^{kg} / _{lb}) ca. per 100	Ordering Codes
		8.8	10.9 (MH)	ØA	ØB							
13	1/2	315	315	12	15	L	30,2	48	24	22x1,5	12,6	CAG-301-15L-W66
		4568	4568	.47	.59		1.19	1.89	.94		27.72	
13	1/2	350	350	12	16	S	30,2	50	24	24x1,5	13,0	CAG-301-16S-W66
		5075	5075	.47	.63		1.19	1.97	.94		28.60	
19	3/4	315	315	15	18	L	38,1	53	30	26x1,5	23,1	CAG-302-18L-W66
		4568	4568	.59	.71		1.50	2.09	1.18		50.71	
19	3/4	350	350	16	20	S	38,1	57	30	30x2	24,2	CAG-302-20S-W66
		5075	5075	.63	.79		1.50	2.24	1.18		53.24	
19	3/4	160	160	19	22	L	38,1	53	30	30x2	20,1	CAG-302-22L-W66
		2320	2320	.75	.87		1.50	2.09	1.18		44.11	
19	3/4	350	350	17	25	S	38,1	57	30	36x2	25,6	CAG-302-25S-W66
		5075	5075	.67	.98		1.50	2.24	1.18		56.36	
19	3/4	160	160	19	28	L	38,1	53	30	36x2	21,7	CAG-302-28L-W66
		2320	2320	.75	1.10		1.50	2.09	1.18		47.81	
25	1	250	315	20	25	S	44,45	58	36	36x2	34,5	CAG-303-25S-W66
		3625	4568	.79	.98		1.75	2.28	1.42		75.90	
25	1	160	160	24	28	L	44,45	54	36	36x2	28,3	CAG-303-28L-W66
		2320	2320	.94	1.10		1.75	2.13	1.42		62.26	
25	1	250	315	24	30	S	44,45	63	36	42x2	35,2	CAG-303-30S-W66
		3625	4568	.94	1.18		1.75	2.48	1.42		77.44	
32	1-1/4	200	250	20	25	S	50,8	60	41	36x2	46,6	CAG-304-25S-W66
		2900	3625	.79	.98		2.00	2.36	1.61		102.52	
32	1-1/4	160	160	22	28	L	50,8	59	41	36x2	43,5	CAG-304-28L-W66
		2320	2320	.87	1.10		2.00	2.32	1.61		95.80	
32	1-1/4	200	250	25	30	S	50,8	62	41	42x2	44,8	CAG-304-30S-W66
		2900	3625	.98	1.18		2.00	2.44	1.61		98.56	
32	1-1/4	160	160	30	35	L	50,8	58	41	45x2	35,9	CAG-304-35L-W66
		2320	2320	1.18	1.38		2.00	2.28	1.61		78.98	
32	1-1/4	200	250	28	38	S	50,8	67	46	52x2	54,4	CAG-304-38S-W66
		2900	3625	1.10	1.50		2.00	2.64	1.81		119.68	
38	1-1/2	200	200	32	38	S	60,35	70	46	52x2	62,3	CAG-305-38S-W66
		2900	2900	1.26	1.50		2.38	2.76	1.81		137.06	
38	1-1/2	160	160	36	42	L	60,35	64	46	52x2	47,7	CAG-305-42L-W66
		2320	2320	1.42	1.65		2.38	2.52	1.81		104.90	

Materials / Ordering Options / Examples

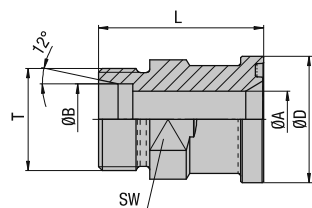
- * SAE Flange Adaptor (without O-ring) made of Steel S355J0 or equivalent, zinc-plated and thick-film-passivated **CAG-...-...-W66**
- * SAE Flange Adaptor (without O-ring) made of Steel S355J0 / C45 or equivalent, zinc/nickel-plated (on request) **CAG-...-...-W3**
- * SAE Flange Adaptor (without O-ring) made of Stainless Steel V4A – 1.4571 (on request) **CAG-...-...-W5**

- * Kit with DB including Metric bolts 8.8, spring rings, O-ring made of NBR (Buna-N®) **CAG-...-...-W66-K**
- * Kit with DB including Metric bolts 8.8, spring rings, O-ring made of FKM (Viton®) **CAG-...-...-V-W66-K**
- * Kit with DB including Metric bolts 10.9, spring rings, O-ring made of NBR (Buna-N®) **CAG-...-...-MH-W130-K**
- * Kit with DB including UNC bolts (Grade 8), spring rings, O-ring made of NBR (Buna-N®) **CAG-...-...-U-W130-K**

Please always indicate ØB and Series.

¹ The maximum working pressure PN (bar/PSI) applies only to the flange itself and depends on the bolts used (Grade 8.8 / 10.9). The actual maximum working pressure depends on the thickness and the quality of the tube used.



SAE Flange Adaptor with Male Metric Thread and 24° Conical Bore (acc. to ISO 8434-1)
 Type CAG-L/S = 6000 PSI Series


B

6000 PSI High Pressure Series (according to ISO 6162-2:2002)

Nominal Size	PN ¹ (bar/PSI)	Dimensions (mm/in)				Series	ØD	L	SW	T (Metric)	Weight (kg/lbs) ca. per 100	Ordering Codes
		8.8	10.9 (MH)	ØA	ØB							
13	1/2	350	420	12	16	S	31,8	53	24	24x1,5	1,5	CAG-601-16S-W66
		5075	6090	.47	.63		1.25	2.09	.94		3.30	
19	3/4	350	420	12	16	S	41,3	59	30	24x1,5	29,5	CAG-602-16S-W66
		5075	6090	.47	.63		1.63	2.32	1.18		64.90	
19	3/4	350	400	16	20	S	41,3	61	30	30x2	28,5	CAG-602-20S-W66
		5075	5800	.63	.79		1.63	2.40	1.18		62.74	
19	3/4	350	400	17	25	S	41,3	63	30	36x2	30,4	CAG-602-25S-W66
		5075	5800	.67	.98		1.63	2.48	1.18		66.84	
19	3/4	350	400	18	30	S	41,3	64	36	42x2	36,8	CAG-602-30S-W66
		5075	5800	.71	1.18		1.63	2.52	1.42		80.96	
25	1	350	400	20	25	S	47,6	72	36	36x2	49,8	CAG-603-25S-W66
		5075	5800	.79	.98		1.87	2.83	1.42		109.56	
25	1	350	400	24	30	S	47,6	74	36	42x2	47,7	CAG-603-30S-W66
		5075	5800	.94	1.18		1.87	2.91	1.42		104.94	
32	1-1/4	350	400	25	30	S	54	79	41	42x2	62,1	CAG-604-30S-W66 ²
		5075	5800	.98	1.18		2.13	3.11	1.61		136.62	
32	1-1/4	350	350	30	38	S	54	83	46	52x2	66,1	CAG-604-38S-W66 ²
		5075	5075	1.18	1.50		2.13	3.27	1.81		145.42	
38	1-1/2	350	350	30	38	S	63,5	89	46	52x2	92,2	CAG-605-38S-W66
		5075	5075	1.18	1.50		2.50	3.50	1.81		202.77	

¹ The maximum working pressure PN (bar/PSI) applies only to the flange itself and depends on the bolts used (Grade 8.8 / 10.9). The actual maximum working pressure depends on the thickness and the quality of the tube used.

² According to ISO 6162-2 bolts M12 should be used but because usually bolts M14 are used the description of the complete part must show M14 (e.g. CAG-604-S30-M14#K).

Materials / Ordering Options / Examples

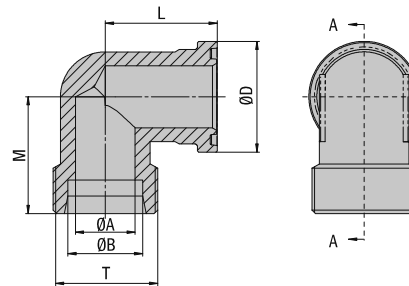
- * SAE Flange Adaptor (without O-ring) made of Steel S355J0 or equivalent, zinc-plated and thick-film-passivated CAG-...-...-W66
- * SAE Flange Adaptor (without O-ring) made of Steel S355J0 / C45 or equivalent, zinc/nickel-plated (on request) CAG-...-...-W3
- * SAE Flange Adaptor (without O-ring) made of Stainless Steel V4A – 1.4571 (on request) CAG-...-...-W5
- * Kit with DB including Metric bolts 8.8, spring rings, O-ring made of NBR (Buna-N®) CAG-...-...-W66-K
- * Kit with DB including Metric bolts 8.8, spring rings, O-ring made of FKM (Viton®) CAG-...-...-V-W66-K
- * Kit with DB including Metric bolts 10.9, spring rings, O-ring made of NBR (Buna-N®) CAG-...-...-MH-W130-K
- * Kit with DB including UNC bolts (Grade 8), spring rings, O-ring made of NBR (Buna-N®) CAG-...-...-U-W130-K

Please always indicate ØB and Series.



SAE 90° Flange Adaptor with Male Metric Thread and 24° Conical Bore (acc. to ISO 8434-1) Type CAG90-L/S - 3000 PSI Series

B



3000 PSI Standard Pressure Series (according to ISO 6162-1:2002)

Nominal Size	PN ¹ (^{bar} / _{PSI})	Dimensions (^{mm} / _{in})				Series	ØD	L	M	T (Metric)	Weight (^{kg} / _{lb}) ca. per 100	Ordering Codes
		8.8	10.9 (MH)	ØA	ØB							
13	1/2	315	315	12	15	L	30,2	39	36	22x1,5	16,4	CAG90-301-15L-W66
		4568	4568	.47	.59		1.19	1.54	1.42		36.08	
13	1/2	350	350	12	16	S	30,2	39	38	24x1,5	17,2	CAG90-301-16S-W66
		5075	5075	.47	.63		1.19	1.54	1.50		37.84	
19	3/4	315	315	15	18	L	38,1	42	39	26x1,5	30,2	CAG90-302-18L-W66
		4568	4568	.59	.71		1.50	1.65	1.54		66.44	
19	3/4	350	350	16	20	S	38,1	42	43	30x2	33,4	CAG90-302-20S-W66
		5075	5075	.63	.79		1.50	1.65	1.69		73.48	
19	3/4	160	160	19	22	L	38,1	42	41	30x2	28,8	CAG90-302-22L-W66
		2320	2320	.75	.87		1.50	1.65	1.61		63.36	
19	3/4	350	350	17	25	S	38,1	42	45	36x2	35,6	CAG90-302-25S-W66
		5075	5075	.67	.98		1.50	1.65	1.77		78.32	
25	1	250	315	20	25	S	44,45	45	48,5	36x2	52,3	CAG90-303-25S-W66
		3625	4568	.79	.98		1.75	1.77	1.91		115.06	
25	1	160	160	24	28	L	44,45	45	45,5	36x2	40,7	CAG90-303-28L-W66
		2320	2320	.94	1.10		1.75	1.77	1.79		89.54	
25	1	250	315	24	30	S	44,45	45	50	42x2	47,2	CAG90-303-30S-W66
		3625	4568	.94	1.18		1.75	1.77	1.97		103.84	
32	1-1/4	200	250	20	25	S	50,8	50	55	36x2	70,8	CAG90-304-25S-W66
		2900	3625	.79	.98		2.00	1.97	2.17		155.76	
32	1-1/4	200	250	25	30	S	50,8	50	57	42x2	67,5	CAG90-304-30S-W66
		2900	3625	.98	1.18		2.00	1.97	2.24		148.50	
32	1-1/4	160	160	30	38	L	50,8	50	57	45x2	56,5	CAG90-304-35L-W66
		2320	2320	1.18	1.50		2.00	1.97	2.24		124.30	
32	1-1/4	200	250	28	38	S	50,8	50	59	52x2	71,5	CAG90-304-38S-W66
		2900	3625	1.10	1.50		2.00	1.97	2.32		157.30	
38	1-1/2	200	200	32	38	S	60,35	55	64	52x2	138,4	CAG90-305-38S-W66
		2900	2900	1.26	1.50		2.38	2.17	2.52		304.48	
38	1-1/2	160	160	36	42	L	60,35	55	58	52x2	75,4	CAG90-305-42L-W66
		2320	2320	1.42	1.65		2.38	2.17	2.28		165.93	

Materials / Ordering Options / Examples

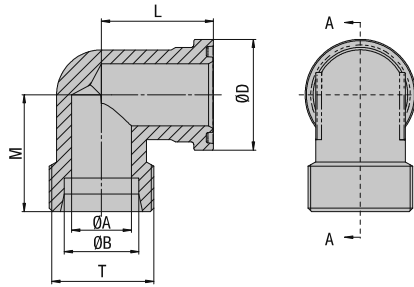
- * SAE Flange Adaptor (without O-ring) made of Steel S355J0 or equivalent, zinc-plated and thick-film-passivated **CAG90-...-...-W66**
- * SAE Flange Adaptor (without O-ring) made of Steel S355J0 / C45 or equivalent, zinc/nickel-plated (on request) **CAG90-...-...-W3**
- * SAE Flange Adaptor (without O-ring) made of Stainless Steel V4A – 1.4404 (on request) **CAG90-...-...-W5**

- * Kit with DB including Metric bolts 8.8, spring rings, O-ring made of NBR (Buna-N®) **CAG90-...-...-W66-K**
- * Kit with DB including Metric bolts 8.8, spring rings, O-ring made of FKM (Viton®) **CAG90-...-...-V-W66-K**
- * Kit with DB including Metric bolts 10.9, spring rings, O-ring made of NBR (Buna-N®) **CAG90-...-...-MH-W130-K**
- * Kit with DB including UNC bolts (Grade 8), spring rings, O-ring made of NBR (Buna-N®) **CAG90-...-...-U-W130-K**

Please always indicate ØB and Series.

¹ The maximum working pressure PN (bar/PSI) applies only to the flange itself and depends on the bolts used (Grade 8.8 / 10.9). The actual maximum working pressure depends on the thickness and the quality of the tube used.



**SAE 90° Flange Adaptor with Male Metric Thread and 24° Conical Bore (acc. to ISO 8434-1)
 Type CAG90-L/S = 6000 PSI Series**

B

6000 PSI High Pressure Series (according to ISO 6162-2:2002)

Nominal Size	PN ¹ (^{bar} / ^{PSI})	Dimensions (^{mm} / ⁱⁿ)					ØD	L	M	T (Metric)	Weight (^{kg} / _{lb}) ca. per 100	Ordering Codes
		8.8	10.9 (MH)	ØA	ØB							
13	1/2	350	420	12	16	S	31,8	39	37,9	24x1,5	18,9	CAG90-601-16S-W66
		5075	6090	.47	.63		1.25	1.54	1.49		41.58	
19	3/4	350	420	12	16	S	41,3	48	45	24x1,5	42,3	CAG90-602-16S-W66
		5075	6090	.47	.63		1.63	1.89	1.77		93.06	
19	3/4	350	400	16	20	S	41,3	48	46	30x2	43,0	CAG90-602-20S-W66
		5075	5800	.63	.79		1.63	1.89	1.81		94.60	
19	3/4	350	400	17	25	S	41,3	48	48	36x2	43,6	CAG90-602-25S-W66
		5075	5800	.67	.98		1.63	1.89	1.89		95.92	
25	1	350	400	20	25	S	47,6	60	53	36x2	73,4	CAG90-603-25S-W66
		5075	5800	.79	.98		1.87	2.36	2.09		161.48	
25	1	350	400	24	30	S	47,6	60	55	42x2	63,2	CAG90-603-30S-W66
		5075	5800	.94	1.18		1.87	2.36	2.17		139.04	
32	1-1/4	350	400	25	30	S	54	68	58	42x2	89,3	CAG90-604-30S-W66 ²
		5075	5800	.98	1.18		2.13	2.68	2.28		196.46	
32	1-1/4	350	350	30	38	S	54	68	61	52x2	88,7	CAG90-604-38S-W66 ²
		5075	5075	1.18	1.50		2.13	2.68	2.40		195.14	
38	1-1/2	350	350	25	30	S	63,5	76	72	42x2	177,2	CAG90-605-30S-W66
		5075	5075	.98	1.18		2.50	2.99	2.83		389.84	
38	1-1/2	350	350	30	38	S	63,5	76	72	52x2	147,1	CAG90-605-38S-W66
		5075	5075	1.18	1.50		2.50	2.99	2.83		323.62	

¹ The maximum working pressure PN (bar/PSI) applies only to the flange itself and depends on the bolts used (Grade 8.8 / 10.9). The actual maximum working pressure depends on the thickness and the quality of the tube used.

² According to ISO 6162-2 bolts M12 should be used but because usually bolts M14 are used the description of the complete part must show M14 (e.g. CAG90-604-S30-M14#K).

Materials / Ordering Options / Examples

- * SAE Flange Adaptor (without O-ring) made of Steel S355J0 or equivalent, zinc-plated and thick-film-passivated **CAG90-...-...-W66**
- * SAE Flange Adaptor (without O-ring) made of Steel S355J0 / C45 or equivalent, zinc/nickel-plated (on request) **CAG90-...-...-W3**
- * SAE Flange Adaptor (without O-ring) made of Stainless Steel V4A – 1.4404 (on request) **CAG90-...-...-W5**

- * Kit with DB including Metric bolts 8.8, spring rings, O-ring made of NBR (Buna-N®) **CAG90-...-...-W66-K**
- * Kit with DB including Metric bolts 8.8, spring rings, O-ring made of FKM (Viton®) **CAG90-...-...-V-W66-K**
- * Kit with DB including Metric bolts 10.9, spring rings, O-ring made of NBR (Buna-N®) **CAG90-...-...-MH-W130-K**
- * Kit with DB including UNC bolts (Grade 8), spring rings, O-ring made of NBR (Buna-N®) **CAG90-...-...-U-W130-K**

Please always indicate ØB and Series.

