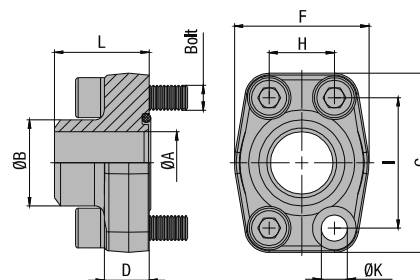


SAE Single-Part Butt-Weld Flange for High Pressure Tubes (Schedule 80/160/XXS) Type BFX-ST ■ 3000 PSI Series



C

3000 PSI Standard Pressure Series (based on ISO 6162-1:2002)

Nominal Size	PN ¹ (^{bar} / ^{PSI})	Dimensions (^{mm} / ⁱⁿ)											Weight (^{kg} / ^{lbs}) ca. per 100	for Bolts		Ordering Codes
		8.8	10.9 (MH)	ØA	ØB	D	F	G	H	I	L	ØK ³		Metric ³	UNC	
13	1/2	350	350	13	21,6	16	47	57	17,5	38,1	36	8,7	26,0	M8x30	5/16-18 UNC x 1-1/4	BFX-301-ST-21.6/13-W1
		5075	5075	.51	.85	.63	1.85	2.24	.69	1.50	1.42	.34	57.20			
13	1/2	350	350	13	17,5	16	47	57	17,5	38,1	36	8,7	24,2	M8x30	5/16-18 UNC x 1-1/4	BFX-301-ST-17.5/13-W1
		5075	5075	.51	.69	.63	1.85	2.24	.69	1.50	1.42	.34	53.24			
19	3/4	350	350	19	27,2	18	50	67	22,3	47,6	36	10,5	35,2	M10x35	3/8-16 UNC x 1-1/2	BFX-302-ST-28/19-W1
		5075	5075	.75	1.07	.71	1.97	2.64	.88	1.87	1.42	.41	77.44			
25	1	250	315	25	34	18	54	72	26,2	52,4	38	10,5	40,8	M10x35	3/8-16 UNC x 1-1/2	BFX-303-ST-34/25-W1
		3625	4568	.98	1.34	.71	2.13	2.83	1.03	2.06	1.50	.41	89.76			
32	1-1/4	200	250	32	42,8	21	68	82	30,2	58,7	41	11,5 (13,5)	71,3	M10x40 (M12x40)	7/16-14 UNC x 1-1/2	BFX-304-ST-42.8/32-W1
		2900	3625	1.26	1.69	.83	2.68	3.23	1.19	2.31	1.61	.45 (.53)	156.86			
38	1-1/2	200	200	38	48,6	25	79	96	35,7	69,9	44	13,5 (14,5)	97,3	M12x45 (M14x45)	1/2-13 UNC x 1-3/4	BFX-305-ST-48.6/38-W1
		2900	2900	1.50	1.91	.98	3.11	3.78	1.41	2.75	1.73	.53 (.57)	214.06			
51	2	160	200	51	61	25,5	88	102	42,9	77,8	45	13,5 (14,5)	115,1	M12x45 (M14x45)	1/2-13 UNC x 1-3/4	BFX-306-ST-61/51-W1
		2320	2900	2.01	2.40	1.00	3.46	4.02	1.69	3.06	1.77	.53 (.57)	253.22			
64	2-1/2	100	160	63	77	26	101	115	50,8	88,9	50	13,5 (14,5)	153,2	M12x45 (M14x45)	1/2-13 UNC x 1-3/4	BFX-307-ST-77/63-W1
		1450	2320	2.48	3.03	1.02	3.98	4.53	2.00	3.50	1.97	.53 (.57)	337.04			
76	3	100	160	73	92	27,5	127	137	61,9	106,4	50	17	229,0	M16x50	5/8-11 UNC x 2	BFX-308-ST-92/73-W1
		1450	2320	2.87	3.62	1.08	5.00	5.39	2.44	4.19	1.97	.67	503.80			
89	3-1/2	35	35	89	103	27,5	138	155	69,9	120,7	50	17	259,1	M16x50	5/8-11 UNC x 2	BFX-309-ST-103/89-W1
		508	508	3.50	4.06	1.08	5.43	6.10	2.75	4.75	1.97	.67	570.02			
102	4	35	35	99	115,5	27,5	147	163	77,8	130,2	50	17	286,5	M16x50	5/8-11 UNC x 2	BFX-310-ST-115.5/99-W1
		508	508	3.90	4.55	1.08	5.79	6.42	3.06	5.13	1.97	.67	630.30			
127	5	35	35	120	140,2	28	180	184	92	152,4	50	17	398,6	M16x55	5/8-11 UNC x 2-1/4	BFX-311-ST-140.2/120-W1
		508	508	4.72	5.52	1.10	7.09	7.24	3.62	6.00	1.97	.67	876.92			

Materials / Ordering Options / Examples

- * SAE Single-Part Flange (without O-ring) made of Steel S355J0 or equivalent, blank (oiled)
- * SAE Single-Part Flange (without O-ring) made of Stainless Steel V4A – 1.4404 (on request)

BFX-...-ST-**-**/**-W1
BFX-...-ST-**-**/**-W5

- * Kit including Metric bolts 8.8, spring rings, O-ring made of NBR (Buna-N®)
- * Kit including Metric bolts 8.8, spring rings, O-ring made of FKM (Viton®)
- * Kit including Metric bolts 10.9, spring rings, O-ring made of NBR (Buna-N®)
- * Kit including UNC bolts (Grade 8), spring rings, O-ring made of NBR (Buna-N®)

BFX-...-ST-**-**/**-W46-K
BFX-...-ST-**-**/**-V-W46-K
BFX-...-ST-**-**/**-MH-W1-K
BFX-...-ST-**-**/**-U-W1-K

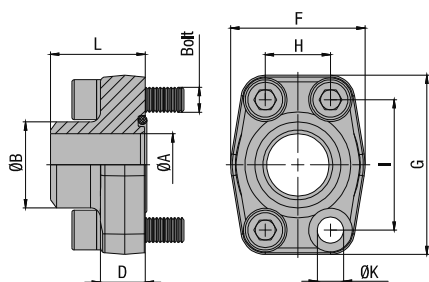
Please always indicate ØB / ØA.

¹ The maximum working pressure PN (bar/PSI) applies only to the flange itself and depends on the bolts used (Grade 8.8 / 10.9). The actual maximum working pressure depends on the thickness and the quality of the tube used.

³ Alternative options shown in brackets are available on request.



SAE Single-Part Butt-Weld Flange for High Pressure Tubes (Schedule 80/160/XXS) Type BFX-ST - 6000 PSI Series



6000 PSI High Pressure Series (based on ISO 6162-2:2002)

C

Nominal Size	PN ¹ (^{bar} / ^{PSI})	Dimensions (^{mm} / ⁱⁿ)											Weight (^{kg} / ^{lbs}) ca. per 100	for Bolts		Ordering Codes
		8.8	10.9 (MH)	ØA	ØB	D	F	G	H	I	L	ØK		Metric	UNC	
13	1/2	350	420	13	21,6	16,5	47	57	18,2	40,5	36	8,7	33,3	M8x30	5/16-18 UNC x 1-1/4	BFX-601-ST-21.6/13-W1
		5075	6090	.51	.85	.65	1.85	2.24	.72	1.59	1.42	.34	73.26			
13	1/2	350	420	13	17,5	16,5	47	57	18,2	40,5	36	8,7	24,2	M8x30	5/16-18 UNC x 1-1/4	BFX-601-ST-17.5/13-W1
		5075	6090	.51	.69	.65	1.85	2.24	.72	1.59	1.42	.34	53.24			
19	3/4	350	420	19	28	19,5	54	72	23,8	50,8	36	10,5	49,4	M10x35	3/8-16 UNC x 1-1/2	BFX-602-ST-28/19-W1
		5075	6090	.75	1.10	.77	2.13	2.83	.94	2.00	1.42	.41	108.68			
25	1	350	420	25	34	24,5	68	82	27,8	57,2	41	13	64,1	M12x45	7/16-14 UNC x 1-3/4	BFX-603-ST-34/25-W1 ²
		5075	6090	.98	1.34	.96	2.68	3.23	1.09	2.25	1.61	.51	141.02			
32	1-1/4	350	420	32	42,8	27,5	79	95	31,8	66,6	44	13,5	101,3	M12x45	1/2-13 UNC x 1-3/4	BFX-604-ST-42.8/32-W1
		5075	6090	1.26	1.69	1.08	3.11	3.74	1.25	2.62	1.73	.53	222.86			
32	1-1/4	350	420	32	42,8	27,5	79	95	31,8	66,6	44	15	98,1	M14x45		BFX-604-ST-42.8/32-M14-W1
		5075	6090	1.26	1.69	1.08	3.11	3.74	1.25	2.62	1.73	.59	215.82			
32	1-1/4	350	420	29	42,8	27,5	79	95	31,8	66,6	44	13,5	112,8	M12x45	1/2-13 UNC x 1-3/4	BFX-604-ST-42.8/29-W1 (SCH 160)
		5075	6090	1.14	1.69	1.08	3.11	3.74	1.25	2.62	1.73	.53	248.16			
32	1-1/4	350	420	29	42,8	27,5	79	95	31,8	66,6	44	15	100,8	M14x45		BFX-604-ST-42.8/29-M14-W1
		5075	6090	1.14	1.69	1.08	3.11	3.74	1.25	2.62	1.73	.59	221.76			
38	1-1/2	350	420	38	48,6	31	88	108	36,5	79,3	56	17	168,2	M16x55	5/8-11 UNC x 2-1/4	BFX-605-ST-48.6/38-W1
		5075	6090	1.50	1.91	1.22	3.46	4.25	1.44	3.12	2.20	.67	370.04			
38	1-1/2	350	420	32	48,6	31	88	108	36,5	79,3	56	17	170,9	M16x55	5/8-11 UNC x 2-1/4	BFX-605-ST-48.6/32-W1 (SCH 160)
		5075	6090	1.26	1.91	1.22	3.46	4.25	1.44	3.12	2.20	.67	375.98			
51	2	350	420	51	61	37	118	137	44,5	96,8	65	21	284,5	M20x70	3/4-10 UNC x 2-3/4	BFX-606-ST-61/51-W1
		5075	6090	2.01	2.40	1.46	4.65	5.39	1.75	3.81	2.56	.83	625.90			
51	2	350	420	43	61	37	118	137	44,5	96,8	65	21	316,4	M20x70	3/4-10 UNC x 2-3/4	BFX-606-ST-61/43-W1 (SCH 160)
		5075	6090	1.69	2.40	1.46	4.65	5.39	1.75	3.81	2.56	.83	696.08			
64	2-1/2	350	420	51	76,1	45	150	180	58,7	123,8	80	26	727,7	M24x80		BFX-607-ST-76.1/51-W1
		5075	6090	2.01	3.00	1.77	5.91	7.09	2.31	4.87	3.15	1.02	1600.94			
64	2-1/2	350	420	60	90	45	150	180	58,7	123,8	80	26	730,0	M24x80		BFX-607-ST-90/60-W1 (SCH XXS)
		5075	6090	2.36	3.54	1.77	5.91	7.09	2.31	4.87	3.15	1.02	1606.00			
76	3	350	420	90	67,7	152,4	208	71,4	178	90	55	33	1305,0	M30x100		BFX-608-ST-90/67-W1 (SCH 160)
		5075	6090	3.54	2.67	6.00	8.19	2.81	7.01	3.54	2.17	1.30	2871.00			
76	3	350	420	90	58,4	152,4	208	71,4	178	90	55	33	1305,0	M30x100		BFX-608-ST-90/58-W1 (SCH XXS)
		5075	6090	3.54	2.30	6.00	8.19	2.81	7.01	3.54	2.17	1.30	2871.00			

¹ The maximum working pressure PN (bar/PSI) applies only to the flange itself and depends on the bolts used (Grade 8.8 / 10.9). The actual maximum working pressure depends on the thickness and the quality of the tube used.

² For UNC threaded bolts, use hexagon head bolts only. Please note that these do not belong to our product range.

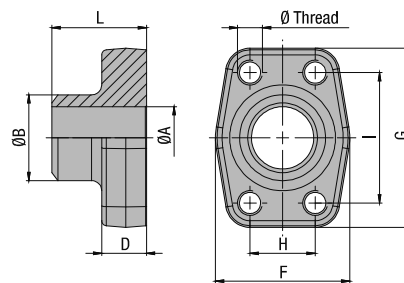
Materials / Ordering Options / Examples

- * SAE Single-Part Flange (without O-ring) made of Steel S355J0 or equivalent, blank (oiled) BFX-...-ST-**-**/-W1
- * SAE Single-Part Flange (without O-ring) made of Stainless Steel V4A - 1.4404 (on request) BFX-...-ST-**-**/-W5
- * Kit including Metric bolts 8.8, spring rings, O-ring made of NBR (Buna-N®) BFX-...-ST-**-**/-W46-K
- * Kit including Metric bolts 8.8, spring rings, O-ring made of FKM (Viton®) BFX-...-ST-**-**/-V-W46-K
- * Kit including Metric bolts 10.9, spring rings, O-ring made of NBR (Buna-N®) BFX-...-ST-**-**/-MH-W1-K
- * Kit including UNC bolts (Grade 8), spring rings, O-ring made of NBR (Buna-N®) BFX-...-ST-**-**/-U-W1-K

Please always indicate ØB / ØA.



SAE Single-Part Butt-Weld Counterflange for High Pressure Tubes (Schedule 80/160/XXS) Type BAS-ST - 3000 PSI Series



C

3000 PSI Standard Pressure Series (based on ISO 6162-1:2002)

Nominal Size DN	(in)	PN ¹ (^{bar} / ^{PSI})		Dimensions (^{mm} / ⁱⁿ)								Weight (^{kg} / ^{lb}) ca. per 100	Ø Thread		Ordering Codes
		8.8	10.9 (MH)	ØA	ØB	D	F	G	H	I	L		Metric ³	UNC	
13	1/2	350	350	13	21,6	16	47	57	17,5	38,1	36	26,3	M8	5/16-18 UNC	BAS-301-ST-21.6/13-W1
		5075	5075	.51	.85	.63	1.85	2.24	.69	1.50	1.42	57.86			
13	1/2	350	350	13	17,5	16	47	57	17,5	38,1	36	25,8	M8	5/16-18 UNC	BAS-301-ST-17.5/13-W1
		5075	5075	.51	.69	.63	1.85	2.24	.69	1.50	1.42	56.76			
19	3/4	350	350	19	27,2	18	50	67	22,3	47,6	36	36,6	M10	3/8-16 UNC	BAS-302-ST-28/19-W1
		5075	5075	.75	1.07	.71	1.97	2.64	.88	1.87	1.42	80.52			
25	1	250	315	25	34	18	54	72	26,2	52,4	38	43,1	M10 (M12)	3/8-14 UNC	BAS-303-ST-34/25-W1
		3625	4568	.98	1.34	.71	2.13	2.83	1.03	2.06	1.50	94.82			
32	1-1/4	200	250	32	42,8	21	68	82	30,2	58,7	41	67,5	M10 (M12)	3/8-14 UNC	BAS-304-ST-42.8/32-W1
		2900	3625	1.26	1.69	.83	2.68	3.23	1.19	2.31	1.61	148.50			
38	1-1/2	200	200	38	48,6	25	79	96	35,7	69,9	44	103,4	M12 (M14)	1/2-13 UNC	BAS-305-ST-48.6/38-W1
		2900	2900	1.50	1.91	.98	3.11	3.78	1.41	2.75	1.73	227.48			
51	2	160	200	51	61	25,5	88	102	42,9	77,8	45	122,7	M12 (M14)	1/2-13 UNC	BAS-306-ST-61/51-W1
		2320	2900	2.01	2.40	1.00	3.46	4.02	1.69	3.06	1.77	269.94			
64	2-1/2	100	160	63	77	26	101	115	50,8	88,9	50	155,8	M12 (M14)	1/2-13 UNC	BAS-307-ST-77/63-W1
		1450	2320	2.48	3.03	1.02	3.98	4.53	2.00	3.50	1.97	342.76			
76	3	100	160	73	92	27,5	127	137	61,9	106,4	50	236,0	M16	5/8-11 UNC	BAS-308-ST-92/73-W1
		1450	2320	2.87	3.62	1.08	5.00	5.39	2.44	4.19	1.97	519.20			
89	3-1/2	35	35	89	103	27,5	138	155	69,9	120,7	50	267,3	M16	5/8-11 UNC	BAS-309-ST-103/89-W1
		508	508	3.50	4.06	1.08	5.43	6.10	2.75	4.75	1.97	588.06			
102	4	35	35	99	115,5	27,5	147	163	77,8	130,2	50	291,3	M16	5/8-11 UNC	BAS-310-ST-115.5/99-W1
		508	508	3.90	4.55	1.08	5.79	6.42	3.06	5.13	1.97	640.86			
127	5	35	35	120	140,2	28	180	184	92	152,4	50	416,1	M16	5/8-11 UNC	BAS-311-ST-140.2/120-W1
		508	508	4.72	5.52	1.10	7.09	7.24	3.62	6.00	1.97	915.42			

Materials / Ordering Options / Examples

* SAE Single-Part Counterflange made of Steel S355J0 or equivalent, blank (oiled) with Metric tapped holes

BAS-...-ST-**-**/W1

* SAE Single-Part Counterflange made of Stainless Steel V4A – 1.4404 (on request) with Metric tapped holes

BAS-...-ST-**-**/W5

* SAE Single-Part Counterflange made of Steel S355J0 or equivalent, blank (oiled) with size of Metric tapped holes deviating from the standard (e.g. M14)

BAS-...-ST-**-**/M14-W1

* SAE Single-Part Counterflange made of Steel S355J0 or equivalent, blank (oiled) with UNC tapped holes

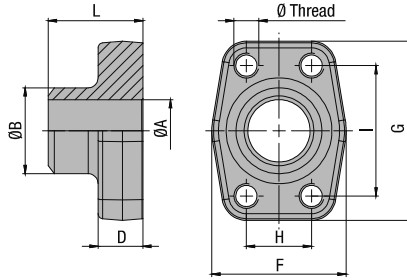
BAS-...-ST-**-**/U-W1

Please always indicate ØB / ØA.

¹ The maximum working pressure PN (bar/PSI) applies only to the flange itself and depends on the bolts used (Grade 8.8 / 10.9). The actual maximum working pressure depends on the thickness and the quality of the tube used.

³ Alternative options shown in brackets are available on request.



SAE Single-Part Butt-Weld Counterflange for High Pressure Tubes (Schedule 80/160/XXS)
 Type BAS-ST - 6000 PSI Series


6000 PSI High Pressure Series (based on ISO 6162-2:2002)

C

Nominal Size	PN ¹ (bar/PSI)	Dimensions (mm/in)										Weight (kg/lbs) ca. per 100	Ø Thread		Ordering Codes
		DN	(in)	8.8	10.9 (MH)	ØA	ØB	D	F	G	H		I	L	
13	1/2	350	420	13	21,6	16,5	47	57	18,2	40,5	36	27,8	M8	5/16-18 UNC	BAS-601-ST-21.6/13-W1
		5075	6090	.51	.85	.65	1.85	2.24	.72	1.59	1.42	61.16			
13	1/2	350	420	13	17,5	16,5	47	57	18,2	40,5	36	26,1	M8	5/16-18 UNC	BAS-601-ST-17.5/13-W1
		5075	6090	.51	.69	.65	1.85	2.24	.72	1.59	1.42	57.42			
19	3/4	350	420	19	28	19,5	54	72	23,8	50,8	36	49,0	M10	3/8-16 UNC	BAS-602-ST-28/19-W1
		5075	6090	.75	1.10	.77	2.13	2.83	.94	2.00	1.42	107.80			
25	1	350	420	25	34	24,5	68	82	27,8	57,2	41	67,5	M12	7/16-14 UNC	BAS-603-ST-34/25-W1
		5075	6090	.98	1.34	.96	2.68	3.23	1.09	2.25	1.61	148.50			
32	1-1/4	350	420	32	42,8	27,5	79	95	31,8	66,6	44	106,3	M12	1/2-13 UNC	BAS-604-ST-42.8/32-W1
		5075	6090	1.26	1.69	1.08	3.11	3.74	1.25	2.62	1.73	233.86			
32	1-1/4	350	420	32	42,8	27,5	79	95	31,8	66,6	44	103,2	M14		BAS-604-ST-42.8/32-M14-W1
		5075	6090	1.26	1.69	1.08	3.11	3.74	1.25	2.62	1.73	227.04			
32	1-1/4	350	420	29	42,8	27,5	79	95	31,8	66,6	44	101,0	M12	1/2-13 UNC	BAS-604-ST-42.8/29-W1 (SCH 160)
		5075	6090	1.14	1.69	1.08	3.11	3.74	1.25	2.62	1.73	222.20			
32	1-1/4	350	420	29	42,8	27,5	79	95	31,8	66,6	44	113,3	M14		BAS-604-ST-42.8/29-M14-W1
		5075	6090	1.14	1.69	1.08	3.11	3.74	1.25	2.62	1.73	249.26			
38	1-1/2	350	420	38	48,3	31	88	108	36,5	79,3	56	182,4	M16	5/8-11 UNC	BAS-605-ST-48.6/38-W1
		5075	6090	1.50	1.90	1.22	3.46	4.25	1.44	3.12	2.20	401.28			
38	1-1/2	350	420	32	48,3	31	88	108	36,5	79,3	56	180,0	M16	5/8-11 UNC	BAS-605-ST-48.6/32-W1 (SCH 160)
		5075	6090	1.26	1.90	1.22	3.46	4.25	1.44	3.12	2.20	396.00			
51	2	350	420	51	61	37	118	137	44,5	96,8	65	287,3	M20	3/4-10 UNC	BAS-606-ST-61/51-W1
		5075	6090	2.01	2.40	1.46	4.65	5.39	1.75	3.81	2.56	632.06			
51	2	350	420	43	61	37	118	137	44,5	96,8	65	326,6	M20	3/4-10 UNC	BAS-606-ST-61/43-W1 (SCH 160)
		5075	6090	1.69	2.40	1.46	4.65	5.39	1.75	3.81	2.56	718.52			
64	2-1/2	350	420	51	76,1	45	150	180	58,7	123,8	80	728,0	M24		BAS-606-ST-76.1/51-W1
		5075	6090	2.01	3.00	1.77	5.91	7.09	2.31	4.87	3.15	1601.60			
64	2-1/2	350	420	60,5	90	45	150	180	58,7	123,8	80	751,5	M24		BAS-607-ST-90/60.5-W1 (SCH XXS)
		5075	6090	2.38	3.54	1.77	5.91	7.09	2.31	4.87	3.15	1653.30			
76	3	350	420	90	67,7	152,4	208	71,4	178	90	55	1305,0	M30		BAS-608-ST-90/67-W1 (SCH 160)
		5075	6090	3.54	2.67	6.00	8.19	2.81	7.01	3.54	2.17	2871.00			
76	3	350	420	90	58,4	152,4	208	71,4	178	90	55	1305,0	M30		BAS-608-ST-90/58-W1 (SCH XXS)
		5075	6090	3.54	2.30	6.00	8.19	2.81	7.01	3.54	2.17	2871.00			

¹ The maximum working pressure PN (bar/PSI) applies only to the flange itself and depends on the bolts used (Grade 8.8 / 10.9). The actual maximum working pressure depends on the thickness and the quality of the tube used.

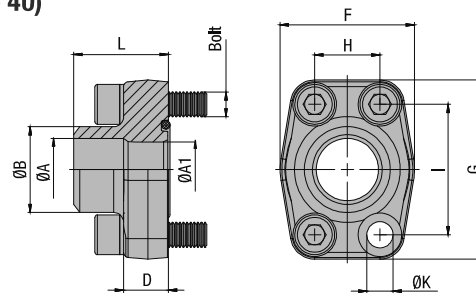
Materials / Ordering Options / Examples

- * SAE Single-Part Counterflange made of Steel S355J0 or equivalent, blank (oiled) with Metric tapped holes BAS-...-ST-**-**/W1
- * SAE Single-Part Counterflange made of Stainless Steel V4A – 1.4404 (on request) with Metric tapped holes BAS-...-ST-**-**/W5
- * SAE Single-Part Counterflange made of Steel S355J0 or equivalent, blank (oiled) with size of Metric tapped holes deviating from the standard (e.g. M14) BAS-...-ST-**-**/M14-W1
- * SAE Single-Part Counterflange made of Steel S355J0 or equivalent, blank (oiled) with UNC tapped holes BAS-...-ST-**-**/U-W1

Please always indicate ØB / ØA.



SAE Single-Part Butt-Weld Flange for Low Pressure Tubes (Schedule 40) Type BFX-STRE - 3000 PSI Series



C

3000 PSI Standard Pressure Series (based on ISO 6162-1:2002)

Nominal Size	PN ¹ (^{bar} / _{PSI})	Dimensions (^{mm} / _{in})											Weight (^{kg} / _{lbs}) ca. per 100	for Bolts		Ordering Codes	
		DN	(in)	8.8	10.9 (MH)	ØA	ØA1	ØB	D	F	G	H		I	L		ØK ³
13	1/2	350	350	16	13	22	16	47	57	17,5	38,1	36	8,7	25,6	M8x30	5/16-18 UNC x 1-1/4	BFX-301-STRE-22/16-W1
		5075	5075	.63	.51	.87	.63	1.85	2.24	.69	1.50	1.42	.34	56.32			
19	3/4	350	350	21,5	19	28	18	50	67	22,3	47,6	36	10,5	34,0	M10x35	3/8-16 UNC x 1-1/2	BFX-302-STRE-28/21.5-W1
		5075	5075	.85	.75	1.10	.71	1.97	2.64	.88	1.87	1.42	.41	74.80			
25	1	250	315	27	25	35	18	54	72	26,2	52,4	38	10,5	40,0	M10x35	3/8-16 UNC x 1-1/2	BFX-303-STRE-35/27-W1
		3625	4568	1.06	.98	1.38	.71	2.13	2.83	1.03	2.06	1.50	.41	88.00			
32	1-1/4	200	250	36	31	43	21	68	82	30,2	58,7	41	11,5 (13,5)	61,7	M10x40 (M12x40)	7/16-14 UNC x 1-1/2	BFX-304-STRE-43/36-W1
		2900	3625	1.42	1.22	1.69	.83	2.68	3.23	1.19	2.31	1.61	.45 (.53)	135.74			
38	1-1/2	200	200	42	38	49	25	79	96	35,7	69,9	44	13,5 (14,5)	92,8	M12x45 (M14x45)	1/2-13 UNC x 1-3/4	BFX-305-STRE-49/42-W1
		2900	2900	1.65	1.50	1.93	.98	3.11	3.78	1.41	2.75	1.73	.53 (.57)	204.16			
51	2	160	200	42	42	49	25,5	88	102	42,9	77,8	45	13,5 (14,5)	116,4	M12x45 (M14x45)	1/2-13 UNC x 1-3/4	BFX-306-STRE-49/42-W1
		2320	2900	1.65	1.65	1.93	1.00	3.46	4.02	1.69	3.06	1.77	.53 (.57)	256.08			
51	2	160	200	53	49	61	25,5	88	102	42,9	77,8	45	13,5 (14,5)	115,8	M12x45 (M14x45)	1/2-13 UNC x 1-3/4	BFX-306-STRE-61/53-W1
		2320	2900	2.09	1.93	2.40	1.00	3.46	4.02	1.69	3.06	1.77	.53 (.57)	254.76			
64	2-1/2	100	160	53	53	61	26	101	115	50,8	88,9	50	13,5 (14,5)	148,3	M12x45 (M14x45)	1/2-13 UNC x 1-3/4	BFX-307-STRE-61/53-W1
		1450	2320	2.09	2.09	2.40	1.02	3.98	4.53	2.00	3.50	1.97	.53 (.57)	326.26			
64	2-1/2	100	160	70	62	77	26	101	115	50,8	88,9	50	13,5 (14,5)	143,2	M12x45 (M14x45)	1/2-13 UNC x 1-3/4	BFX-307-STRE-77/70-W1
		1450	2320	2.76	2.44	3.03	1.02	3.98	4.53	2.00	3.50	1.97	.53 (.57)	315.04			
76	3	100	160	82	74	90	27,5	127	137	61,9	106,4	50	17	200,0	M16x50	5/8-11 UNC x 2	BFX-308-STRE-90/82-W1
		1450	2320	3.23	2.91	3.54	1.08	5.00	5.39	2.44	4.19	1.97	.67	440.00			
89	3-1/2	35	35	82	82	90	27,5	138	155	69,9	120,7	50	17	244,0	M16x50	5/8-11 UNC x 2	BFX-309-STRE-90/82-W1
		508	508	3.23	3.23	3.54	1.08	5.43	6.10	2.75	4.75	1.97	.67	536.80			
89	3-1/2	35	35	70	70	77	27,5	138	155	69,9	120,7	50	17	243,6	M16x50	5/8-11 UNC x 2	BFX-309-STRE-77/70-W1
		508	508	2.76	2.76	3.03	1.08	5.43	6.10	2.75	4.75	1.97	.67	535.92			
102	4	35	35	82	82	90	27,5	147	163	77,8	130,2	50	17	283,1	M16x50	5/8-11 UNC x 2	BFX-310-STRE-90/82-W1
		508	508	3.23	3.23	3.54	1.08	5.79	6.42	3.06	5.13	1.97	.67	622.82			
102	4	35	35	107	102	115	27,5	147	163	77,8	130,2	50	17	254,3	M16x50	5/8-11 UNC x 2	BFX-310-STRE-115/107-W1
		508	508	4.21	4.02	4.53	1.08	5.79	6.42	3.06	5.13	1.97	.67	559.46			
127	5	35	35	131	120	140,2	28	180	184	92	152,4	50	17	381,9	M16x55	5/8-11 UNC x 2-1/4	BFX-311-STRE-140/131-W1
		508	508	5.16	4.72	5.52	1.10	7.09	7.24	3.62	6.00	1.97	.67	840.18			

Materials / Ordering Options / Examples

- * SAE Single-Part Flange (without O-ring) made of Steel S355J0 or equivalent, blank (oiled)
- * SAE Single-Part Flange (without O-ring) made of Stainless Steel V4A - 1.4404 (on request)

BFX-...-STRE-**-**/-W1
BFX-...-STRE-**-**/-W5

- * Kit including Metric bolts 8.8, spring rings, O-ring made of NBR (Buna-N®)
- * Kit including Metric bolts 8.8, spring rings, O-ring made of FKM (Viton®)
- * Kit including Metric bolts 10.9, spring rings, O-ring made of NBR (Buna-N®)
- * Kit including UNC bolts (Grade 8), spring rings, O-ring made of NBR (Buna-N®)

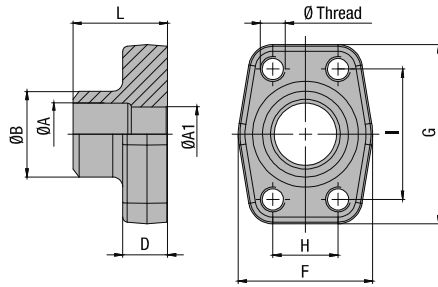
BFX-...-STRE-**-**/-W46-K
BFX-...-STRE-**-**/-V-W46-K
BFX-...-STRE-**-**/-MH-W1-K
BFX-...-STRE-**-**/-U-W1-K

Please always indicate ØB / ØA.

¹ The maximum working pressure PN (bar/PSI) applies only to the flange itself and depends on the bolts used (Grade 8.8 / 10.9). The actual maximum working pressure depends on the thickness and the quality of the tube used.

³ Alternative options shown in brackets are available on request.



**SAE Single-Part Butt-Weld Counterflange for Low Pressure Tubes (Schedule 40)
Type BAS-STRE - 3000 PSI Series**

C
3000 PSI Standard Pressure Series (based on ISO 6162-1:2002)

Nominal Size	PN ¹ (^{bar} / ^{PSI})	Dimensions (^{mm} / ⁱⁿ)											Weight (^{kg} / ^{lbs}) ca. per 100	for Bolts		Ordering Codes
		8.8	10.9 (MH)	ØA	ØA1	ØB	D	F	G	H	I	L		Metric ³	UNC	
13	1/2	350	350	16	13	22	16	47	57	17,5	38,1	36	26,7	M8	5/16-18 UNC	BAS-301-STRE-22/16-W1
		5075	5075	.63	.51	.87	.63	1.85	2.24	.69	1.50	1.42	58.74			
19	3/4	350	350	21,5	19	28	18	50	67	22,3	47,6	36	36,3	M10	3/8-16 UNC	BAS-302-STRE-28/21.5-W1
		5075	5075	.85	.75	1.10	.71	1.97	2.64	.88	1.87	1.42	79.86			
25	1	250	315	27	25	35	18	54	72	26,2	52,4	38	43,1	M10	3/8-16 UNC	BAS-303-STRE-35/27-W1
		3625	4568	1.06	.98	1.38	.71	2.13	2.83	1.03	2.06	1.50	94.82			
32	1-1/4	200	250	36	31	43	21	68	82	30,2	58,7	41	65,3	M10 (M12)	7/16-14 UNC	BAS-304-STRE-43/36-W1
		2900	3625	1.42	1.22	1.69	.83	2.68	3.23	1.19	2.31	1.61	143.66			
38	1-1/2	200	200	42	38	49	25	79	96	35,7	69,9	44	97,1	M12 (M14)	1/2-13 UNC	BAS-305-STRE-49/42-W1
		2900	2900	1.65	1.50	1.93	.98	3.11	3.78	1.41	2.75	1.73	213.62			
51	2	160	200	42	42	49	25,5	88	102	42,9	77,8	45	0,0	M12 (M14)	1/2-13 UNC	BAS-306-STRE-49/42-W1
		2320	2900	1.65	1.65	1.93	1.00	3.46	4.02	1.69	3.06	1.77	.00			
51	2	160	200	53	49	61	25,5	88	102	42,9	77,8	45	119,7	M12 (M14)	1/2-13 UNC	BAS-306-STRE-61/53-W1
		2320	2900	2.09	1.93	2.40	1.00	3.46	4.02	1.69	3.06	1.77	263.34			
64	2-1/2	100	160	53	53	61	26	101	115	50,8	88,9	50	150,1	M12 (M14)	1/2-13 UNC	BAS-307-STRE-61/53-W1
		1450	2320	2.09	2.09	2.40	1.02	3.98	4.53	2.00	3.50	1.97	330.22			
64	2-1/2	100	160	70	62	77	26	101	115	50,8	88,9	50	149,2	M12 (M14)	1/2-13 UNC	BAS-307-STRE-77/70-W1
		1450	2320	2.76	2.44	3.03	1.02	3.98	4.53	2.00	3.50	1.97	328.24			
76	3	100	160	82	74	90	27,5	127	137	61,9	106,4	50	211,7	M16	5/8-11 UNC	BAS-308-STRE-90/82-W1
		1450	2320	3.23	2.91	3.54	1.08	5.00	5.39	2.44	4.19	1.97	465.74			
89	3-1/2	35	35	82	82	90	27,5	138	155	69,9	120,7	50	255,1	M16	5/8-11 UNC	BAS-309-STRE-90/82-W1
		508	508	3.23	3.23	3.54	1.08	5.43	6.10	2.75	4.75	1.97	561.22			
89	3-1/2	35	35	70	70	77	27,5	138	155	69,9	120,7	50	268,9	M16	5/8-11 UNC	BAS-309-STRE-77/70-W1
		508	508	2.76	2.76	3.03	1.08	5.43	6.10	2.75	4.75	1.97	591.67			
102	4	35	35	82	82	90	27,5	147	163	77,8	130,2	50	289,2	M16	5/8-11 UNC	BAS-310-STRE-90/82-W1
		508	508	3.23	3.23	3.54	1.08	5.79	6.42	3.06	5.13	1.97	636.24			
102	4	35	35	107	102	115	27,5	147	163	77,8	130,2	50	257,4	M16	5/8-11 UNC	BAS-310-STRE-115/107-W1
		508	508	4.21	4.02	4.53	1.08	5.79	6.42	3.06	5.13	1.97	566.28			
127	5	35	35	131	120	140,2	28	180	184	92	152,4	50	383,2	M16	5/8-11 UNC	BAS-311-STRE-140/131-W1
		508	508	5.16	4.72	5.52	1.10	7.09	7.24	3.62	6.00	1.97	843.04			

¹ The maximum working pressure PN (bar/PSI) applies only to the flange itself and depends on the bolts used (Grade 8.8 / 10.9). The actual maximum working pressure depends on the thickness and the quality of the tube used.

³ Alternative options shown in brackets are available on request.

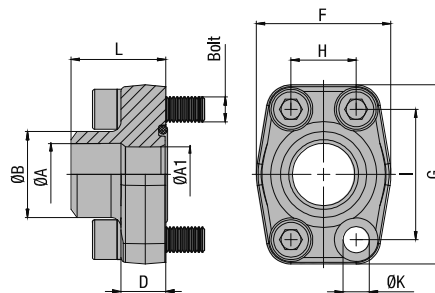
Materials / Ordering Options / Examples

- * SAE Single-Part Counterflange made of Steel S355J0 or equivalent, blank (oiled) with Metric tapped holes **BAS-...-STRE-**-**/-W1**
- * SAE Single-Part Counterflange made of Stainless Steel V4A – 1.4404 (on request) with Metric tapped holes **BAS-...-STRE-**-**/-W5**
- * SAE Single-Part Counterflange made of Steel S355J0 or equivalent, blank (oiled) with size of Metric tapped holes deviating from the standard (e.g. M14) **BAS-...-STRE-**-**/-M14-W1**
- * SAE Single-Part Counterflange made of Steel S355J0 or equivalent, blank (oiled) with UNC tapped holes **BAS-...-STRE-**-**/-U-W1**

Please always indicate ØB / ØA.



SAE Single-Part Butt-Weld Flange for Metric Tubes
Type BFX-SRE - 3000 PSI Series



C

3000 PSI Standard Pressure Series (based on ISO 6162-1:2002)

Nominal Size	PN ¹ (^{bar} / _{PSI})	Dimensions (^{mm} / _{in})											Weight (^{kg} / _{lbs}) ca. per 100	for Bolts		Ordering Codes	
		DN	(in)	8.8	10.9 (MH)	ØA	ØA1	ØB	D	F	G	H		I	L		ØK ³
13	1/2	350	350	14	14	20	16	47	57	17,5	38,1	36	8,7	24,4	M8x30	5/16-18 UNC x 1-1/4	BFX-301-SRE-20/14-W1
		5075	5075	.55	.55	.79	.63	1.85	2.24	.69	1.50	1.42	.34	53.68			
13	1/2	350	350	16	13	22	16	47	57	17,5	38,1	36	8,7	24,4	M8x30	5/16-18 UNC x 1-1/4	BFX-301-SRE-22/16-W1
		5075	5075	.63	.51	.87	.63	1.85	2.24	.69	1.50	1.42	.34	54.78			
19	3/4	350	350	19	19	25	18	50	67	22,3	47,6	36	10,5	32,4	M10x35	3/8-16 UNC x 1-1/2	BFX-302-SRE-25/19-W1
		5075	5075	.75	.75	.98	.71	1.97	2.64	.88	1.87	1.42	.41	71.28			
19	3/4	350	350	21,5	19	28	18	50	67	22,3	47,6	36	10,5	33,9	M10x35	3/8-16 UNC x 1-1/2	BFX-302-SRE-28/21.5-W1
		5075	5075	.85	.75	1.10	.71	1.97	2.64	.88	1.87	1.42	.41	74.58			
25	1	250	315	22	22	30	18	54	72	26,2	52,4	38	10,5	41,0	M10x35	3/8-16 UNC x 1-1/2	BFX-303-SRE-30/22-W1
		3625	4568	.87	.87	1.18	.71	2.13	2.83	1.03	2.06	1.50	.41	90.20			
25	1	250	315	27	25	35	18	54	72	26,2	52,4	38	10,5	40,6	M10x35	3/8-16 UNC x 1-1/2	BFX-303-SRE-35/27-W1
		3625	4568	1.06	.98	1.38	.71	2.13	2.83	1.03	2.06	1.50	.41	89.32			
32	1-1/4	200	250	30	30	38	21	68	82	30,2	58,7	41	11,5 (13,5)	60,6	M10x40 (M12x40)	7/16-14 UNC x 1-1/2	BFX-304-SRE-38/30-W1
		2900	3625	1.18	1.18	1.50	.83	2.68	3.23	1.19	2.31	1.61	.45 (.53)	133.32			
32	1-1/4	200	250	36	31	43	21	68	82	30,2	58,7	41	11,5 (13,5)	61,7	M10x40 (M12x40)	7/16-14 UNC x 1-1/2	BFX-304-SRE-43/36-W1
		2900	3625	1.42	1.22	1.69	.83	2.68	3.23	1.19	2.31	1.61	.45 (.53)	135.74			
38	1-1/2	200	200	30	30	38	25	79	96	35,7	69,9	44	13,5 (14,5)	97,4	M12x45 (M14x45)	1/2-13 UNC x 1-3/4	BFX-305-SRE-38/30-W1
		2900	2900	1.18	1.18	1.50	.98	3.11	3.78	1.41	2.75	1.73	.53 (.57)	214.28			
38	1-1/2	200	200	36	36	42	25	79	96	35,7	69,9	44	13,5 (14,5)	91,3	M12x45 (M14x45)	1/2-13 UNC x 1-3/4	BFX-305-SRE-42/36-W1
		2900	2900	1.42	1.42	1.65	.98	3.11	3.78	1.41	2.75	1.73	.53 (.57)	200.86			
38	1-1/2	200	200	38	38	49	25	79	96	35,7	69,9	44	13,5 (14,5)	95,8	M12x45 (M14x45)	1/2-13 UNC x 1-3/4	BFX-305-SRE-49/38-W1
		2900	2900	1.50	1.50	1.93	.98	3.11	3.78	1.41	2.75	1.73	.53 (.57)	210.76			
51	2	160	200	49	49	61	25,5	88	102	42,9	77,8	45	13,5 (14,5)	118,4	M12x45 (M14x45)	1/2-13 UNC x 1-3/4	BFX-306-SRE-61/49-W1
		2320	2900	1.93	1.93	2.40	1.00	3.46	4.02	1.69	3.06	1.77	.53 (.57)	260.48			
64	2-1/2	100	160	62	62	77	26	101	115	50,8	88,9	50	13,5 (14,5)	152,1	M12x45 (M14x45)	1/2-13 UNC x 1-3/4	BFX-307-SRE-77/62-W1
		1450	2320	2.44	2.44	3.03	1.02	3.98	4.53	2.00	3.50	1.97	.53 (.57)	334.62			
76	3	100	160	62	62	77	27,5	127	137	61,9	106,4	50	17	229,3	M16x50	5/8-11 UNC x 2	BFX-308-SRE-77/62-W1
		1450	2320	2.44	2.44	3.03	1.08	5.00	5.39	2.44	4.19	1.97	.67	504.46			

Materials / Ordering Options / Examples

- * SAE Single-Part Flange (without O-ring) made of Steel S355J0 or equivalent, blank (oiled)
- * SAE Single-Part Flange (without O-ring) made of Stainless Steel V4A – 1.4404 (on request)

BFX-...-SRE--**/-W1**
BFX-...-SRE--**/-W5**

- * Kit including Metric bolts 8.8, spring rings, O-ring made of NBR (Buna-N®)
- * Kit including Metric bolts 8.8, spring rings, O-ring made of FKM (Viton®)
- * Kit including Metric bolts 10.9, spring rings, O-ring made of NBR (Buna-N®)
- * Kit including UNC bolts (Grade 8), spring rings, O-ring made of NBR (Buna-N®)

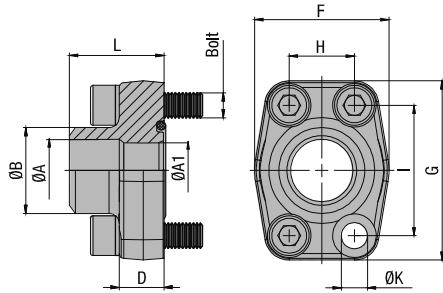
BFX-...-SRE--**/-W46-K**
BFX-...-SRE--**/-V-W46-K**
BFX-...-SRE--**/-MH-W1-K**
BFX-...-SRE--**/-U-W1-K**

Please always indicate ØB / ØA.

¹ The maximum working pressure PN (bar/PSI) applies only to the flange itself and depends on the bolts used (Grade 8.8 / 10.9). The actual maximum working pressure depends on the thickness and the quality of the tube used.

³ Alternative options shown in brackets are available on request.



**SAE Single-Part Butt-Weld Flange for Metric Tubes
Type BFX-SRE - 6000 PSI Series**

6000 PSI High Pressure Series (based on ISO 6162-2:2002)
C

Nominal Size	PN ¹ (^{bar} / _{PSI})	Dimensions (^{mm} / _{in})											Weight (^{kg} / _{lbs}) ca.		for Bolts		Ordering Codes
		DN	(in)	8.8	10.9 (MH)	ØA	ØA1	ØB	D	F	G	H	I	L	ØK	per 100	
13	1/2	350	420	14	14	20	16,5	47	57	18,2	40,5	36	8,7	24,0	M8x30	5/16-18 UNC x 1-1/4	BFX-601-SRE-20/14-W1
		5075	6090	.55	.55	.79	.65	1.85	2.24	.72	1.59	1.42	.34	52.80			
19	3/4	350	420	14	14	20	19,5	54	72	23,8	50,8	36	10,5	48,7	M10x35	3/8-16 UNC x 1-1/2	BFX-602-SRE-20/14-W1
		5075	6090	.55	.55	.79	.77	2.13	2.83	.94	2.00	1.42	.41	107.14			
19	3/4	350	420	17	17	25	19,5	54	72	23,8	50,8	36	10,5	48,8	M10x35	3/8-16 UNC x 1-1/2	BFX-602-SRE-25/17-W1
		5075	6090	.67	.67	.98	.77	2.13	2.83	.94	2.00	1.42	.41	107.36			
25	1	350	420	17	17	25	24,5	68	82	27,8	57,2	44	13	72,7	M12x45	7/16-14 UNC x 1-3/4	BFX-603-SRE-25/17-W1 ²
		5075	6090	.67	.67	.98	.96	2.68	3.23	1.09	2.25	1.73	.51	159.94			
25	1	350	420	22	22	30	24,5	68	82	27,8	57,2	44	13	72,1	M12x45	7/16-14 UNC x 1-3/4	BFX-603-SRE-30/22-W1 ²
		5075	6090	.87	.87	1.18	.96	2.68	3.23	1.09	2.25	1.73	.51	158.62			
32	1-1/4	350	420	22	22	30	27,5	79	95	31,6	66,6	44	13,5	155,7	M12x45	1/2-13 UNC x 1-3/4	BFX-604-SRE-30/22-W1
		5075	6090	.87	.87	1.18	1.08	3.11	3.74	1.24	2.62	1.73	.53	342.54			
32	1-1/4	350	420	22	22	30	27,5	79	95	31,6	66,6	44	15	102,8	M14x45	1/2-13 UNC x 1-3/4	BFX-604-SRE-30/22-M14-W1
		5075	6090	.87	.87	1.18	1.08	3.11	3.74	1.24	2.62	1.73	.59	226.16			
32	1-1/4	350	420	26	26	38	27,5	79	95	31,6	66,6	44	13,5	109,4	M12x45	1/2-13 UNC x 1-3/4	BFX-604-SRE-38/26-W1
		5075	6090	1.02	1.02	1.50	1.08	3.11	3.74	1.24	2.62	1.73	.53	240.68			
32	1-1/4	350	420	26	26	38	27,5	79	95	31,6	66,6	44	15	105,0	M14x45	1/2-13 UNC x 1-3/4	BFX-604-SRE-38/26-M14-W1
		5075	6090	1.02	1.02	1.50	1.08	3.11	3.74	1.24	2.62	1.73	.59	231.00			
38	1-1/2	350	420	26	26	38	28	88	108	36,5	79,3	56	17	171,6	M16x55	5/8-11 UNC x 2-1/4	BFX-605-SRE-38/26-W1
		5075	6090	1.02	1.02	1.50	1.10	3.46	4.25	1.44	3.12	2.20	.67	377.52			
38	1-1/2	350	420	32	32	49	28	88	108	36,5	79,3	56	17	173,7	M16x55	5/8-11 UNC x 2-1/4	BFX-605-SRE-49/32-W1
		5075	6090	1.26	1.26	1.93	1.10	3.46	4.25	1.44	3.12	2.20	.67	382.14			
38	1-1/2	350	420	40	40	61	28	88	108	36,5	79,3	56	17	180,8	M16x55	5/8-11 UNC x 2-1/4	BFX-605-SRE-61/40-W1
		5075	6090	1.57	1.57	2.40	1.10	3.46	4.25	1.44	3.12	2.20	.67	397.76			
51	2	350	420	40	40	61	37	118	137	44,5	96,8	65	21	317,3	M20x70	3/4-10 UNC x 2-3/4	BFX-606-SRE-61/40-W1
		5075	6090	1.57	1.57	2.40	1.46	4.65	5.39	1.75	3.81	2.56	.83	698.06			
51	2	350	420	50	48	76	28	118	137	44,5	96,8	80	21	308,2	M20x55	3/4-10 UNC x 2-1/4	BFX-606-SRE-76/50-W1
		5075	6090	1.97	1.89	2.99	1.10	4.65	5.39	1.75	3.81	3.15	.83	678.04			

¹ The maximum working pressure PN (bar/PSI) applies only to the flange itself and depends on the bolts used (Grade 8.8 / 10.9). The actual maximum working pressure depends on the thickness and the quality of the tube used.

² For UNC threaded bolts, use hexagon head bolts only. Please note that these do not belong to our product range.

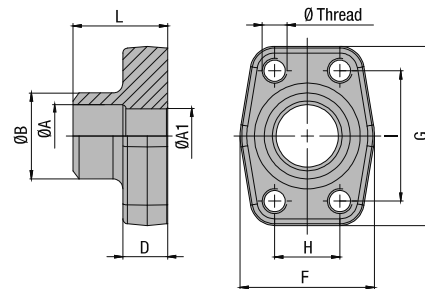
Materials / Ordering Options / Examples

- * SAE Single-Part Flange (without O-ring) made of Steel S355J0 or equivalent, blank (oiled) **BFX-...-SRE-**-**/W1**
- * SAE Single-Part Flange (without O-ring) made of Stainless Steel V4A - 1.4404 (on request) **BFX-...-SRE-**-**/W5**
- * Kit including Metric bolts 8.8, spring rings, O-ring made of NBR (Buna-N®) **BFX-...-SRE-**-**/W46-K**
- * Kit including Metric bolts 8.8, spring rings, O-ring made of FKM (Viton®) **BFX-...-SRE-**-**/V-W46-K**
- * Kit including Metric bolts 10.9, spring rings, O-ring made of NBR (Buna-N®) **BFX-...-SRE-**-**/MH-W1-K**
- * Kit including UNC bolts (Grade 8), spring rings, O-ring made of NBR (Buna-N®) **BFX-...-SRE-**-**/LJ-W1-K**

Please always indicate ØB / ØA.



SAE Single-Part Butt-Weld Counterflange for Metric Tubes Type BAS-SRE - 3000 PSI Series



C

3000 PSI Standard Pressure Series (based on ISO 6162-1:2002)

Nominal Size	PN ¹ (^{bar} / _{PSI})	Dimensions (mm/in)											Weight (^{kg} / _{lbs}) ca. per 100	Ø Thread		Ordering Codes
		8.8	10.9 (MH)	ØA	ØA1	ØB	D	F	G	H	I	L		Metric ³	UNC	
13	1/2	350	350	14	14	20	16	47	57	17,5	38,1	36	26,1	M8	5/16-18 UNC	BAS-301-SRE-20/14-W1
		5075	5075	.55	.55	.79	.63	1.85	2.24	.69	1.50	1.42	57.42			
13	1/2	350	350	16	13	22	16	47	57	17,5	38,1	36	26,7	M8	5/16-18 UNC	BAS-301-SRE-22/16-W1
		5075	5075	.63	.51	.87	.63	1.85	2.24	.69	1.50	1.42	58.74			
19	3/4	350	350	19	19	25	18	50	67	22,3	47,6	36	34,5	M10	3/8-16 UNC	BAS-302-SRE-25/19-W1
		5075	5075	.75	.75	.98	.71	1.97	2.64	.88	1.87	1.42	75.90			
19	3/4	350	350	21,5	19	28	18	50	67	22,3	47,6	36	35,9	M10	3/8-16 UNC	BAS-302-SRE-28/21.5-W1
		5075	5075	.85	.75	1.10	.71	1.97	2.64	.88	1.87	1.42	78.98			
25	1	250	315	22	22	30	18	54	72	26,2	52,4	38	43,6	M10	3/8-16 UNC	BAS-303-SRE-30/22-W1
		3625	4568	.87	.87	1.18	.71	2.13	2.83	1.03	2.06	1.50	95.92			
25	1	250	315	27	25	35	18	54	72	26,2	52,4	38	42,9	M10	3/8-16 UNC	BAS-303-SRE-35/27-W1
		3625	4568	1.06	.98	1.38	.71	2.13	2.83	1.03	2.06	1.50	94.38			
32	1-1/4	200	250	30	30	38	21	68	82	30,2	58,7	41	63,9	M10 (M12)	7/16-14 UNC	BAS-304-SRE-38/30-W1
		2900	3625	1.18	1.18	1.50	.83	2.68	3.23	1.19	2.31	1.61	140.58			
32	1-1/4	200	250	36	31	43	21	68	82	30,2	58,7	41	64,6	M10 (M12)	7/16-14 UNC	BAS-304-SRE-43/36-W1
		2900	3625	1.42	1.22	1.69	.83	2.68	3.23	1.19	2.31	1.61	142.12			
38	1-1/2	200	200	30	30	38	25	79	96	35,7	69,9	44	101,9	M12 (M14)	1/2-13 UNC	BAS-305-SRE-38/30-W1
		2900	2900	1.18	1.18	1.50	.98	3.11	3.78	1.41	2.75	1.73	224.18			
38	1-1/2	200	200	36	36	42	25	79	96	35,7	69,9	44	95,0	M12 (M14)	1/2-13 UNC	BAS-305-SRE-42/36-W1
		2900	2900	1.42	1.42	1.65	.98	3.11	3.78	1.41	2.75	1.73	209.00			
38	1-1/2	200	200	38	38	49	25	79	96	35,7	69,9	44	101,6	M12 (M14)	1/2-13 UNC	BAS-305-SRE-49/38-W1
		2900	2900	1.50	1.50	1.93	.98	3.11	3.78	1.41	2.75	1.73	223.52			
51	2	160	200	49	49	61	25,5	88	102	42,9	77,8	45	123,2	M12 (M14)	1/2-13 UNC	BAS-306-SRE-61/49-W1
		2320	2900	1.93	1.93	2.40	1.00	3.46	4.02	1.69	3.06	1.77	271.04			
64	2-1/2	100	160	62	62	77	26	101	115	50,8	88,9	50	159,6	M12 (M14)	1/2-13 UNC	BAS-307-SRE-77/62-W1
		1450	2320	2.44	2.44	3.03	1.02	3.98	4.53	2.00	3.50	1.97	351.12			
76	3	100	160	62	62	77	27,5	127	137	61,9	106,4	50	235,3	M16	5/8-11 UNC	BAS-308-SRE-77/62-W1
		1450	2320	2.44	2.44	3.03	1.08	5.00	5.39	2.44	4.19	1.97	517.66			

Materials / Ordering Options / Examples

* SAE Single-Part Counterflange made of Steel S355J0 or equivalent, blank (oiled) with Metric tapped holes

BAS-...-SRE-**-**-W1

* SAE Single-Part Counterflange made of Stainless Steel V4A – 1.4404 (on request) with Metric tapped holes

BAS-...-SRE-**-**-W5

* SAE Single-Part Counterflange made of Steel S355J0 or equivalent, blank (oiled) with size of Metric tapped holes deviating from the standard (e.g. M14)

BAS-...-SRE-**-**-M14-W1

* SAE Single-Part Counterflange made of Steel S355J0 or equivalent, blank (oiled) with UNC tapped holes

BAS-...-SRE-**-**-U-W1

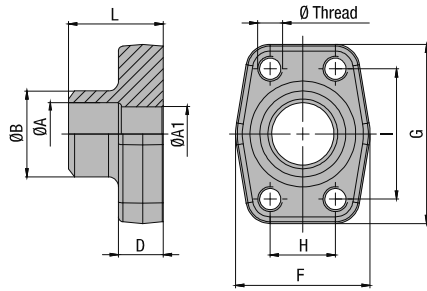
Please always indicate ØB / ØA.

¹ The maximum working pressure PN (bar/PSI) applies only to the flange itself and depends on the bolts used (Grade 8.8 / 10.9). The actual maximum working pressure depends on the thickness and the quality of the tube used.

³ Alternative options shown in brackets are available on request.



SAE Single-Part Butt-Weld Counterflange for Metric Tubes
Type BAS-SRE - 6000 PSI Series



6000 PSI High Pressure Series (based on ISO 6162-2:2002)

Nominal Size	PN ¹ (^{bar} / ^{PSI})	Dimensions (^{mm} / ⁱⁿ)											Weight (^{kg} / ^{lbs}) ca. per 100	for Bolts		Ordering Codes
		8.8	10.9 (MH)	ØA	ØA1	ØB	D	F	G	H	I	L		Metric	UNC	
13	1/2	350	420	14	14	20	16,5	47	57	18,2	40,5	36	25,6	M8	5/16-18 UNC	BAS-601-SRE-20/14-W1
		5075	6090	.55	.55	.79	.65	1.85	2.24	.72	1.59	1.42	56.32			
19	3/4	350	420	14	14	20	19,5	54	72	23,8	50,8	36	51,7	M10	3/8-16 UNC	BAS-602-SRE-20/14-W1
		5075	6090	.55	.55	.79	.77	2.13	2.83	.94	2.00	1.42	113.74			
19	3/4	350	420	17	17	25	19,5	54	72	23,8	50,8	36	51,3	M10	3/8-16 UNC	BAS-602-SRE-25/17-W1
		5075	6090	.67	.67	.98	.77	2.13	2.83	.94	2.00	1.42	112.86			
25	1	350	420	17	17	25	24,5	68	82	27,8	57,2	44	76,5	M12	7/16-14 UNC	BAS-603-SRE-25/17-W1
		5075	6090	.67	.67	.98	.96	2.68	3.23	1.09	2.25	1.73	168.30			
25	1	350	420	22	22	30	24,5	68	82	27,8	57,2	44	75,7	M12	7/16-14 UNC	BAS-603-SRE-30/22-W1
		5075	6090	.87	.87	1.18	.96	2.68	3.23	1.09	2.25	1.73	166.54			
32	1-1/4	350	420	22	22	30	27,5	79	95	31,6	66,6	44	103,0	M12	1/2-13 UNC	BAS-604-SRE-30/22-W1
		5075	6090	.87	.87	1.18	1.08	3.11	3.74	1.24	2.62	1.73	226.60			
32	1-1/4	350	420	22	22	30	27,5	79	95	31,6	66,6	44	106,8	M14		BAS-604-SRE-30/22-M14-W1
		5075	6090	.87	.87	1.18	1.08	3.11	3.74	1.24	2.62	1.73	234.96			
32	1-1/4	350	420	26	26	38	27,5	79	95	31,6	66,6	44	105,0	M12	1/2-13 UNC	BAS-604-SRE-38/26-W1
		5075	6090	1.02	1.02	1.50	1.08	3.11	3.74	1.24	2.62	1.73	231.00			
32	1-1/4	350	420	26	26	38	27,5	79	95	31,6	66,6	44	110,2	M14		BAS-604-SRE-38/26-M14-W1
		5075	6090	1.02	1.02	1.50	1.08	3.11	3.74	1.24	2.62	1.73	242.44			
38	1-1/2	350	420	26	26	38	28	88	108	36,5	79,3	56	177,3	M16	5/8-11 UNC	BAS-605-SRE-38/26-W1
		5075	6090	1.02	1.02	1.50	1.10	3.46	4.25	1.44	3.12	2.20	390.06			
38	1-1/2	350	420	32	32	49	28	88	108	36,5	79,3	56	180,4	M16	5/8-11 UNC	BAS-605-SRE-49/32-W1
		5075	6090	1.26	1.26	1.93	1.10	3.46	4.25	1.44	3.12	2.20	396.88			
38	1-1/2	350	420	40	40	61	28	88	108	36,5	79,3	56	185,5	M16	5/8-11 UNC	BAS-605-SRE-61/40-W1
		5075	6090	1.57	1.57	2.40	1.10	3.46	4.25	1.44	3.12	2.20	408.10			
51	2	350	420	40	40	61	37	118	137	44,5	96,8	70	352,8	M20	3/4-10 UNC	BAS-606-SRE-61/40-W1
		5075	6090	1.57	1.57	2.40	1.46	4.65	5.39	1.75	3.81	2.76	776.16			
51	2	350	420	50	48	76	28	118	137	44,5	96,8	80	105,0	M20	3/4-10 UNC	BAS-606-SRE-76/50-W1
		5075	6090	1.97	1.89	2.99	1.10	4.65	5.39	1.75	3.81	3.15	231.00			

¹ The maximum working pressure PN (bar/PSI) applies only to the flange itself and depends on the bolts used (Grade 8.8 / 10.9). The actual maximum working pressure depends on the thickness and the quality of the tube used.

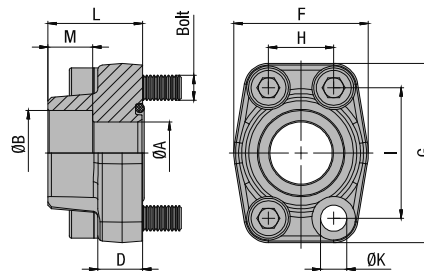
Materials / Ordering Options / Examples

- * SAE Single-Part Counterflange made of Steel S355J0 or equivalent, blank (oiled) with Metric tapped holes BAS-...-SRE-**-**/-W1
- * SAE Single-Part Counterflange made of Stainless Steel V4A – 1.4404 (on request) with Metric tapped holes BAS-...-SRE-**-**/-W5
- * SAE Single-Part Counterflange made of Steel S355J0 or equivalent, blank (oiled) with size of Metric tapped holes deviating from the standard (e.g. M14) BAS-...-SRE-**-**/-M14-W1
- * SAE Single-Part Counterflange made of Steel S355J0 or equivalent, blank (oiled) with UNC tapped holes BAS-...-SRE-**-**/-U-W1

Please always indicate ØB / ØA.



**SAE Single-Part Socket-Weld Flange
Type BFX-ES - 3000 PSI Series**



C

3000 PSI Standard Pressure Series (based on ISO 6162-1:2002)

Nominal Size	PN ¹ (^{bar} /PSI)	Dimensions (^{mm} / ⁱⁿ)													Weight (^{kg} / ^{lbs}) ca. per 100	for Bolts		Ordering Codes
		DN	(in)	8.8	10.9 (MH)	ØA	ØB	D	F	G	H	I	L	M		ØK ³	Metric ³	
13	1/2	350	350	13	21,6	16	47	57	17,5	38,1	36	18	8,7	27,7	M8x30	5/16-18 UNC x 1-1/4	BFX-301-ES-21.6/13-W1	
		5075	5075	.51	.85	.63	1.85	2.24	.69	1.50	1.42	.71	.34	60.94				
13	1/2	350	350	13	17,5	16	47	57	17,5	38,1	36	18	8,7	28,6	M8x30	5/16-18 UNC x 1-1/4	BFX-301-ES-17.5/13-W1	
		5075	5075	.51	.69	.63	1.85	2.24	.69	1.50	1.42	.71	.34	62.92				
13	1/2	350	350	13	20,3	16	47	57	17,5	38,1	36	18	8,7	28,8	M8x30	5/16-18 UNC x 1-1/4	BFX-301-ES-20.3/13-W1	
		5075	5075	.51	.80	.63	1.85	2.24	.69	1.50	1.42	.71	.34	63.36				
19	3/4	350	350	19	27,2	18	50	67	22,3	47,6	36	18	10,5	37,7	M10x35	3/8-16 UNC x 1-1/2	BFX-302-ES-27.2/19-W1	
		5075	5075	.75	1.07	.71	1.97	2.64	.88	1.87	1.42	.71	.41	82.94				
19	3/4	350	350	19	25,3	18	50	67	22,3	47,6	36	18	10,5	39,7	M10x35	3/8-16 UNC x 1-1/2	BFX-302-ES-25.3/19-W1	
		5075	5075	.75	1.00	.71	1.97	2.64	.88	1.87	1.42	.71	.41	87.34				
25	1	250	315	25	34	18	54	72	26,2	52,4	38	18	10,5	44,8	M10x35	3/8-16 UNC x 1-1/2	BFX-303-ES-34/25-W1	
		3625	4568	.98	1.34	.71	2.13	2.83	1.03	2.06	1.50	.71	.41	98.56				
25	1	250	315	25	30,3	18	54	72	26,2	52,4	38	18	10,5	47,3	M10x35	3/8-16 UNC x 1-1/2	BFX-303-ES-30.3/25-W1	
		3625	4568	.98	1.19	.71	2.13	2.83	1.03	2.06	1.50	.71	.41	104.06				
32	1-1/4	200	250	32	42,8	21	68	82	30,2	58,7	41	20	11,5 (12,5)	64,3	M10x40 (M12x40)	7/16-14 UNC x 1-1/2	BFX-304-ES-42.8/32-W1	
		2900	3625	1.26	1.69	.83	2.68	3.23	1.19	2.31	1.61	.79	.45 (49)	141.46				
32	1-1/4	200	250	32	38,3	21	68	82	30,2	58,7	41	20	11,5 (12,5)	72,0	M10x40 (M12x40)	7/16-14 UNC x 1-1/2	BFX-304-ES-38.3/32-W1	
		2900	3625	1.26	1.51	.83	2.68	3.23	1.19	2.31	1.61	.79	.45 (49)	158.40				
38	1-1/2	200	200	38	48,6	25	79	96	35,7	69,9	44	22	13,5 (14,5)	109,4	M12x45 (M14x45)	1/2-13 UNC x 1-3/4	BFX-305-ES-48.6/38-W1	
		2900	2900	1.50	1.91	.98	3.11	3.78	1.41	2.75	1.73	.87	.53 (57)	240.68				
38	1-1/2	200	200	38	50,5	25	79	96	35,7	69,9	44	22	13,5 (14,5)	101,1	M12x45 (M14x45)	1/2-13 UNC x 1-3/4	BFX-305-ES-50.5/38-W1	
		2900	2900	1.50	1.99	.98	3.11	3.78	1.41	2.75	1.73	.87	.53 (57)	222.42				
51	2	160	200	51	61	25,5	88	102	42,9	77,8	45	24	13,5 (14,5)	125,7	M12x45 (M14x45)	1/2-13 UNC x 1-3/4	BFX-306-ES-61/51-W1	
		2320	2900	2.01	2.40	1.00	3.46	4.02	1.69	3.06	1.77	.94	.53	276.54				
64	2-1/2	100	160	63	76,6	26	101	115	50,8	88,9	50	28	13,5 (14,5)	145,3	M12x45 (M14x45)	1/2-13 UNC x 1-3/4	BFX-307-ES-76.6/63-W1	
		1450	2320	2.48	3.02	1.02	3.98	4.53	2.00	3.50	1.97	1.10	.53 (57)	319.66				
76	3	100	100	73	90,5	27,5	127	137	61,9	106,4	50	28	17	212,7	M16x50	5/8-11 UNC x 2	BFX-308-ES-90.5/73-W1	
		1450	1450	2.87	3.56	1.08	5.00	5.39	2.44	4.19	1.97	1.10	.67	467.94				
89	3-1/2	35	35	89	103	27,5	138	155	69,9	120,7	50	30	17	235,2	M16x50	5/8-11 UNC x 2	BFX-309-ES-103/89-W1	
		508	508	3.50	4.06	1.08	5.43	6.10	2.75	4.75	1.97	1.18	.67	517.44				
102	4	35	35	99	115,5	27,5	147	163	77,8	130,2	50	30	17	282,8	M16x50	5/8-11 UNC x 2	BFX-310-ES-115.5/99-W1	
		508	508	3.90	4.55	1.08	5.79	6.42	3.06	5.13	1.97	1.18	.67	622.16				
127	5	35	35	120	142	28	180	184	92,1	152,4	50	30	17	360,5	M16x55	5/8-11 UNC x 2-1/4	BFX-311-ES-142/120-W1	
		508	508	4.72	5.59	1.10	7.09	7.24	3.63	6.00	1.97	1.18	.67	793.10				

Materials / Ordering Options / Examples

- * SAE Single-Part Flange (without O-ring) made of Steel S355J0 or equivalent, blank (oiled)
- * SAE Single-Part Flange (without O-ring) made of Stainless Steel V4A – 1.4404 (on request)

BFX-...-ES--**/W1**
BFX-...-ES--**/W5**

- * Kit including Metric bolts 8.8, spring rings, O-ring made of NBR (Buna-N®)
- * Kit including Metric bolts 8.8, spring rings, O-ring made of FKM (Viton®)
- * Kit including Metric bolts 10.9, spring rings, O-ring made of NBR (Buna-N®)
- * Kit including UNC bolts (Grade 8), spring rings, O-ring made of NBR (Buna-N®)

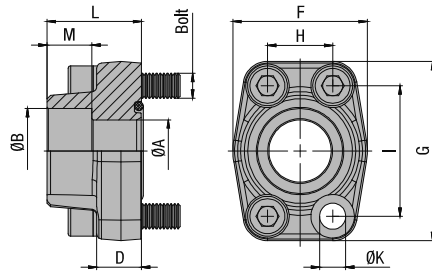
BFX-...-ES--**/W46-K**
BFX-...-ES--**/V-W46-K**
BFX-...-ES--**/MH-W1-K**
BFX-...-ES--**/U-W1-K**

Please always indicate ØB / ØA.

¹ The maximum working pressure PN (bar/PSI) applies only to the flange itself and depends on the bolts used (Grade 8.8 / 10.9). The actual maximum working pressure depends on the thickness and the quality of the tube used.

³ Alternative options shown in brackets are available on request.



**SAE Single-Part Socket-Weld Flange
Type BFX-ES - 6000 PSI Series**

6000 PSI High Pressure Series (based on ISO 6162-2:2002)
C

Nominal Size	PN ¹ (^{bar} / _{PSI})	Dimensions (^{mm} / _{in})												Weight (^{kg} / _{lbs}) ca.	for Bolts		Ordering Codes
		DN	(in)	8.8	10.9 (MH)	ØA	ØB	D	F	G	H	I	L		M	ØK	
13	1/2	350	420	13	21.6	16.5	47	57	18,2	40,5	36	18	8,7	28,0	M8x30	5/16-18 UNC x 1-1/4	BFX-601-ES-21.6/13-W1
		5075	6090	.51	.85	.65	1.85	2.24	.72	1.59	1.42	.71	.34	61.60			
13	1/2	350	420	13	17,5	16,5	47	57	18,2	40,5	36	18	8,7	28,8	M8x30	5/16-18 UNC x 1-1/4	BFX-601-ES-17.5/13-W1
		5075	6090	.51	.69	.65	1.85	2.24	.72	1.59	1.42	.71	.34	63.36			
13	1/2	350	420	13	20,3	16,5	47	57	18,2	40,5	36	18	8,7	27,3	M8x30	5/16-18 UNC x 1-1/4	BFX-601-ES-20.3/13-W1
		5075	6090	.51	.80	.65	1.85	2.24	.72	1.59	1.42	.71	.34	60.06			
19	3/4	350	420	19	27,2	19,5	54	72	23,8	50,8	36	20	10,5	51,9	M10x35	3/8-16 UNC x 1-1/2	BFX-602-ES-27.2/19-W1
		5075	6090	.75	1.07	.77	2.13	2.83	.94	2.00	1.42	.79	.41	114.18			
19	3/4	350	420	19	25,3	19,5	54	72	23,8	50,8	36	20	10,5	53,8	M10x35	3/8-16 UNC x 1-1/2	BFX-602-ES-25.3/19-W1
		5075	6090	.75	1.00	.77	2.13	2.83	.94	2.00	1.42	.79	.41	118.36			
25	1	350	420	25	34	24,5	68	82	27,8	57,2	44	22	13	73,8	M12x45	7/16-14 UNC x 1-3/4	BFX-603-ES-34/25-W1 ²
		5075	6090	.98	1.34	.96	2.68	3.23	1.09	2.25	1.73	.87	.51	162.36			
25	1	350	420	25	30,3	24,5	68	82	27,8	57,2	44	22	13	81,0	M12x45	7/16-14 UNC x 1-3/4	BFX-603-ES-30.3/25-W1 ²
		5075	6090	.98	1.19	.96	2.68	3.23	1.09	2.25	1.73	.87	.51	178.20			
32	1-1/4	350	420	32	42,8	27,5	79	95	31,8	66,6	44	22	13,5	115,7	M12x45	1/2-13 UNC x 1-3/4	BFX-604-ES-42.8/32-W1
		5075	6090	1.26	1.69	1.08	3.11	3.74	1.25	2.62	1.73	.87	.53	254.54			
32	1-1/4	350	420	32	42,8	27,5	79	95	31,8	66,6	44	22	15	110,3	M14x45	1/2-13 UNC x 1-3/4	BFX-604-ES-42.8/32-M14-W1
		5075	6090	1.26	1.69	1.08	3.11	3.74	1.25	2.62	1.73	.87	.59	242.66			
32	1-1/4	350	420	32	38,3	27,5	79	95	31,8	66,6	44	22	13,5	118,3	M12x45	1/2-13 UNC x 1-3/4	BFX-604-ES-38.3/32-W1
		5075	6090	1.26	1.51	1.08	3.11	3.74	1.25	2.62	1.73	.87	.53	260.26			
32	1-1/4	350	420	32	38,3	27,5	79	95	31,8	66,6	44	22	15	125,6	M14x45	1/2-13 UNC x 1-3/4	BFX-604-ES-38.3/32-M14-W1
		5075	6090	1.26	1.51	1.08	3.11	3.74	1.25	2.62	1.73	.87	.59	276.32			
38	1-1/2	350	420	38	48,6	31	88	108	36,5	79,3	51	24	17	183,5	M16x55	5/8-11 UNC x 2-1/4	BFX-605-ES-48.6/38-W1
		5075	6090	1.50	1.91	1.22	3.46	4.25	1.44	3.12	2.01	.94	.67	403.70			
38	1-1/2	350	420	38	50,5	31	88	108	36,5	79,3	51	24	17	184,7	M16x55	5/8-11 UNC x 2-1/4	BFX-605-ES-50.5/38-W1
		5075	6090	1.50	1.99	1.22	3.46	4.25	1.44	3.12	2.01	.94	.67	406.34			
51	2	350	420	51	61	37	118	137	44,5	96,8	65	24	21	329,2	M20x70	3/4-10 UNC x 2-3/4	BFX-606-ES-61/51-W1
		5075	6090	2.01	2.40	1.46	4.65	5.39	1.75	3.81	2.56	.94	.83	724.24			
64	2-1/2	350	420	63	76,6	45	152	180	58,7	123,8	80	32	26	849,6	M24x80	1-1/2-18 UNC x 3-1/2	BFX-607-ES-76.6/63-W1
		5075	6090	2.48	3.02	1.77	5.98	7.09	2.31	4.87	3.15	1.26	1.02	1869.12			
76	3	350	420	73	90,5	55	178	208	71,4	152,4	90	30	33	1110,1	M30x100	1-3/4-24 UNC x 4-1/2	BFX-608-ES-90.5/73-W1
		5075	6090	2.87	3.56	2.17	7.01	8.19	2.81	6.00	3.54	1.18	1.30	2442.22			

¹ The maximum working pressure PN (bar/PSI) applies only to the flange itself and depends on the bolts used (Grade 8.8 / 10.9). The actual maximum working pressure depends on the thickness and the quality of the tube used.

² For UNC threaded bolts, use hexagon head bolts only. Please note that these do not belong to our product range.

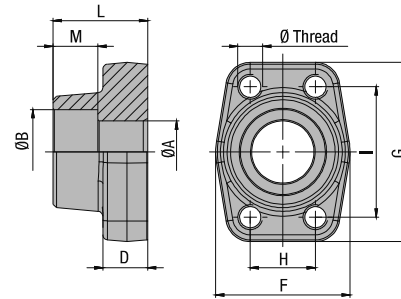
Materials / Ordering Options / Examples

- * SAE Single-Part Flange (without O-ring) made of Steel S355J0 or equivalent, blank (oiled) BFX-...-ES-**-**/**-W1
- * SAE Single-Part Flange (without O-ring) made of Stainless Steel V4A - 1.4404 (on request) BFX-...-ES-**-**/**-W5
- * Kit including Metric bolts 8.8, spring rings, O-ring made of NBR (Buna-N®) BFX-...-ES-**-**/**-W46-K
- * Kit including Metric bolts 8.8, spring rings, O-ring made of FKM (Viton®) BFX-...-ES-**-**/**-V-W46-K
- * Kit including Metric bolts 10.9, spring rings, O-ring made of NBR (Buna-N®) BFX-...-ES-**-**/**-MH-W1-K
- * Kit including UNC bolts (Grade 8), spring rings, O-ring made of NBR (Buna-N®) BFX-...-ES-**-**/**-LJ-W1-K

Please always indicate ØB / ØA.



**SAE Single-Part Socket-Weld Counterflange
Type BAS-ES - 3000 PSI Series**



C

3000 PSI Standard Pressure Series (based on ISO 6162-1:2002)

Nominal Size	PN ¹ (^{bar} / _{PSI})	Dimensions (^{mm} / _{in})											Weight (^{kg} / _{lbs}) ca. per 100	Ø Thread		Ordering Codes
		8.8	10.9 (MH)	ØA	ØB	D	F	G	H	I	L	M		Metric ³	UNC	
13	1/2	350	350	13	21,6	16	47	57	17,5	38,1	36	18	29,4	M8	5/16-18 UNC	BAS-301-ES-21.6/13-W1
		5075	5075	.51	.85	.63	1.85	2.24	.69	1.50	1.42	.71	64.68			
13	1/2	350	350	13	17,5	16	47	57	17,5	38,1	36	18	30,3	M8	5/16-18 UNC	BAS-301-ES-17.5/13-W1
		5075	5075	.51	.69	.63	1.85	2.24	.69	1.50	1.42	.71	66.66			
13	1/2	350	350	13	20,3	16	47	57	17,5	38,1	36	18	30,2	M8	5/16-18 UNC	BAS-301-ES-20.3/13-W1
		5075	5075	.51	.80	.63	1.85	2.24	.69	1.50	1.42	.71	66.44			
19	3/4	350	350	19	27,2	18	50	67	22,3	47,6	36	18	40,1	M10	3/8-16 UNC	BAS-302-ES-27.2/19-W1
		5075	5075	.75	1.07	.71	1.97	2.64	.88	1.87	1.42	.71	88.22			
19	3/4	350	350	19	25,3	18	50	67	22,3	47,6	36	18	41,9	M10	3/8-16 UNC	BAS-302-ES-25.3/19-W1
		5075	5075	.75	1.00	.71	1.97	2.64	.88	1.87	1.42	.71	92.18			
25	1	250	315	25	34	18	54	72	26,2	52,4	38	18	46,4	M10	3/8-16 UNC	BAS-303-ES-34/25-W1
		3625	4568	.98	1.34	.71	2.13	2.83	1.03	2.06	1.50	.71	102.08			
25	1	250	315	25	30,3	18	54	72	26,2	52,4	38	18	50,0	M10	3/8-16 UNC	BAS-303-ES-30.3/25-W1
		3625	4568	.98	1.19	.71	2.13	2.83	1.03	2.06	1.50	.71	110.00			
32	1-1/4	200	250	32	42,8	21	68	82	30,2	58,7	41	20	68,0	M10 (M12)	7/16-14 UNC	BAS-304-ES-42.8/32-W1
		2900	3625	1.26	1.69	.83	2.68	3.23	1.19	2.31	1.61	.79	149.60			
32	1-1/4	200	250	32	38,3	21	68	82	30,2	58,7	41	20	72,0	M10 (M12)	7/16-14 UNC	BAS-304-ES-38.3/32-W1
		2900	3625	1.26	1.51	.83	2.68	3.23	1.19	2.31	1.61	.79	158.40			
38	1-1/2	200	200	38	48,6	25	79	96	35,7	69,9	44	22	107,3	M12 (M14)	1/2-13 UNC	BAS-305-ES-48.6/38-W1
		2900	2900	1.50	1.91	.98	3.11	3.78	1.41	2.75	1.73	.87	236.06			
38	1-1/2	200	200	38	50,5	25	79	96	35,7	69,9	44	22	105,7	M12 (M14)	1/2-13 UNC	BAS-305-ES-50.5/38-W1
		2900	2900	1.50	1.99	.98	3.11	3.78	1.41	2.75	1.73	.87	232.54			
51	2	160	200	51	61	25,5	88	102	42,9	77,8	45	24	126,0	M12 (M14)	1/2-13 UNC	BAS-306-ES-61/51-W1
		2320	2900	2.01	2.40	1.00	3.46	4.02	1.69	3.06	1.77	.94	277.20			
64	2-1/2	100	160	63	76,6	26	101	115	50,8	88,9	50	28	145,0	M12 (M14)	1/2-13 UNC	BAS-307-ES-76.6/63-W1
		1450	2320	2.48	3.02	1.02	3.98	4.53	2.00	3.50	1.97	1.10	319.00			
76	3	100	100	73	90,5	27,5	127	137	61,9	106,4	50	28	217,7	M16	5/8-11 UNC	BAS-308-ES-90.5/73-W1
		1450	1450	2.87	3.56	1.08	5.00	5.39	2.44	4.19	1.97	1.10	478.94			
89	3-1/2	35	35	89	103	27,5	138	155	69,9	120,7	50	30	263,8	M16	5/8-11 UNC	BAS-309-ES-103/89-W1
		508	508	3.50	4.06	1.08	5.43	6.10	2.75	4.75	1.97	1.18	580.36			
102	4	35	35	99	115,5	27,5	147	163	77,8	130,2	50	30	295,1	M16	5/8-11 UNC	BAS-310-ES-115.5/99-W1
		508	508	3.90	4.55	1.08	5.79	6.42	3.06	5.13	1.97	1.18	649.22			
127	5	35	35	120	142	28	180	184	92,1	152,4	50	30	390,6	M16	5/8-11 UNC	BAS-311-ES-142/120-W1
		508	508	4.72	5.59	1.10	7.09	7.24	3.63	6.00	1.97	1.18	859.32			

Materials / Ordering Options / Examples

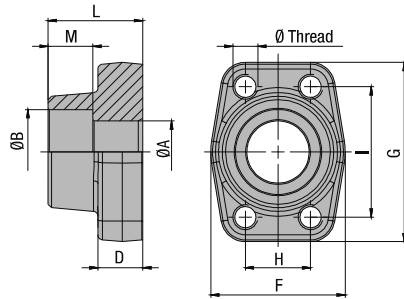
- * SAE Single-Part Counterflange made of Steel S355J0 or equivalent, blank (oiled) with Metric tapped holes **BAS-...-ES-**-**-W1**
- * SAE Single-Part Counterflange made of Stainless Steel V4A – 1.4404 (on request) with Metric tapped holes **BAS-...-ES-**-**-W5**
- * SAE Single-Part Counterflange made of Steel S355J0 or equivalent, blank (oiled) with size of Metric tapped holes deviating from the standard (e.g. M14) **BAS-...-ES-**-**-M14-W1**
- * SAE Single-Part Counterflange made of Steel S355J0 or equivalent, blank (oiled) with UNC tapped holes **BAS-...-ES-**-**-U-W1**

Please always indicate ØB / ØA.

¹ The maximum working pressure PN (bar/PSI) applies only to the flange itself and depends on the bolts used (Grade 8.8 / 10.9). The actual maximum working pressure depends on the thickness and the quality of the tube used.

³ Alternative options shown in brackets are available on request.





SAE Single-Part Socket-Weld Counterflange
Type BAS-ES - 6000 PSI Series



C

6000 PSI High Pressure Series (based on ISO 6162-2:2002)

Nominal Size	PN ¹ (^{bar} /PSI)	Dimensions (mm/in)											Weight (^{kg} /lbs) ca. per 100	Ø Thread		Ordering Codes
		8.8	10.9 (MH)	ØA	ØB	D	F	G	H	I	L	M		Metric	UNC	
13	1/2	350	420	13	21,6	16,5	47	57	18,2	40,5	36	18	28,3	M8	5/16-18 UNC	BAS-601-ES-21.6/13-W1
		5075	6090	.51	.85	.65	1.85	2.24	.72	1.59	1.42	.71	62.26			
13	1/2	350	420	13	17,5	16,5	47	57	18,2	40,5	36	18	30,0	M8	5/16-18 UNC	BAS-601-ES-17.5/13-W1
		5075	6090	.51	.69	.65	1.85	2.24	.72	1.59	1.42	.71	66.00			
13	1/2	350	420	13	20,3	16,5	47	57	18,2	40,5	36	18	29,0	M8	5/16-18 UNC	BAS-601-ES-20.3/13-W1
		5075	6090	.51	.80	.65	1.85	2.24	.72	1.59	1.42	.71	63.80			
19	3/4	350	420	19	27,2	19,5	54	72	23,8	50,8	36	20	51,2	M10	3/8-16 UNC	BAS-602-ES-27.2/19-W1
		5075	6090	.75	1.07	.77	2.13	2.83	.94	2.00	1.42	.79	112.64			
19	3/4	350	420	19	25,3	19,5	54	72	23,8	50,8	36	20	52,5	M10	3/8-16 UNC	BAS-602-ES-25.3/19-W1
		5075	6090	.75	1.00	.77	2.13	2.83	.94	2.00	1.42	.79	115.50			
25	1	350	420	25	34	24,5	68	82	27,8	57,2	44	22	77,1	M12	7/16-14 UNC	BAS-603-ES-34/25-W1
		5075	6090	.98	1.34	.96	2.68	3.23	1.09	2.25	1.73	.87	169.62			
25	1	350	420	25	30,3	24,5	68	82	27,8	57,2	44	22	91,1	M12	7/16-14 UNC	BAS-603-ES-30.3/25-W1
		5075	6090	.98	1.19	.96	2.68	3.23	1.09	2.25	1.73	.87	200.42			
32	1-1/4	350	420	32	42,8	27,5	79	95	31,8	66,6	44	22	117,1	M12	1/2-13 UNC	BAS-604-ES-42.8/32-W1
		5075	6090	1.26	1.69	1.08	3.11	3.74	1.25	2.62	1.73	.87	257.62			
32	1-1/4	350	420	32	42,8	27,5	79	95	31,8	66,6	44	22	116,7	M14		BAS-604-ES-42.8/32-M14-W1
		5075	6090	1.26	1.69	1.08	3.11	3.74	1.25	2.62	1.73	.87	256.74			
32	1-1/4	350	420	32	38,3	27,5	79	95	31,8	66,6	44	22	126,2	M12	1/2-13 UNC	BAS-604-ES-38.3/32-W1
		5075	6090	1.26	1.51	1.08	3.11	3.74	1.25	2.62	1.73	.87	277.64			
32	1-1/4	350	420	32	38,3	27,5	79	95	31,8	66,6	44	22	123,9	M14		BAS-604-ES-38.3/32-M14-W1
		5075	6090	1.26	1.51	1.08	3.11	3.74	1.25	2.62	1.73	.87	272.58			
38	1-1/2	350	420	38	48,6	31	88	108	36,5	79,3	51	24	184,2	M16	5/8-11 UNC	BAS-605-ES-48.6/38-W1
		5075	6090	1.50	1.91	1.22	3.46	4.25	1.44	3.12	2.01	.94	405.24			
38	1-1/2	350	420	38	50,5	31	88	108	36,5	79,3	51	24	191,4	M16	5/8-11 UNC	BAS-605-ES-50.5/38-W1
		5075	6090	1.50	1.99	1.22	3.46	4.25	1.44	3.12	2.01	.94	421.08			
51	2	350	420	51	61	37	118	137	44,5	96,8	65	24	356,9	M20	3/4-10 UNC	BAS-606-ES-61/51-W1
		5075	6090	2.01	2.40	1.46	4.65	5.39	1.75	3.81	2.56	.94	785.18			
64	2-1/2	350	420	63	76,6	45	152	180	58,7	123,8	80	32	740,2	M24		BAS-607-ES-76.6/63-W1
		5075	6090	2.48	3.02	1.77	5.98	7.09	2.31	4.87	3.15	1.26	1628.44			
76	3	350	420	73	90,5	55	178	208	71,4	152,4	90	30	1304,8	M30		BAS-608-ES-90.5/73-W1
		5075	6090	2.87	3.56	2.17	7.01	8.19	2.81	6.00	3.54	1.18	2870.56			

¹ The maximum working pressure PN (bar/PSI) applies only to the flange itself and depends on the bolts used (Grade 8.8 / 10.9). The actual maximum working pressure depends on the thickness and the quality of the tube used.

Materials / Ordering Options / Examples

- * SAE Single-Part Counterflange made of Steel S355J0 or equivalent, blank (oiled) with Metric tapped holes BAS-...-ES-**-**/W1
- * SAE Single-Part Counterflange made of Stainless Steel V4A – 1.4404 (on request) with Metric tapped holes BAS-...-ES-**-**/W5
- * SAE Single-Part Counterflange made of Steel S355J0 or equivalent, blank (oiled) with size of Metric tapped holes deviating from the standard (e.g. M14) BAS-...-ES-**-**/M14-W1
- * SAE Single-Part Counterflange made of Steel S355J0 or equivalent, blank (oiled) with UNC tapped holes BAS-...-ES-**-**/U-W1

Please always indicate ØB / ØA.

