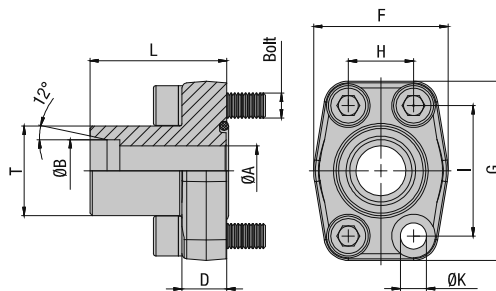


## SAE Single-Part Flange with Male Metric Thread and 24° Conical Bore (acc. to ISO 8434-1) Type BFX-L/S - 3000 PSI Series



3000 PSI Standard Pressure Series (based on ISO 6162-1:2002)

Nominal Size	DN	(in)	PN <sup>1</sup> ( <sup>bar</sup> / <sub>PSI</sub> )		Dimensions ( <sup>mm</sup> / <sub>in</sub> )		Series	D	F	G	H	I	L	T (Metric)	ØK <sup>3</sup>	Weight for Bolts		Ordering Codes
			8.8	10.9 (MH)	ØA	ØB										( <sup>g</sup> / <sub>lbs</sub> ) ca.	Metric <sup>3</sup>	
13	1/2		315	315	11	15	L	16	43	57	17,5	38,1	47	22x1,5	8,7	26,2	M8x30	BFX-301-15L-W66
			4568	4568	.43	.59		.63	1.69	2.24	.69	1.50	1.85			.34		
19	3/4		350	350	16	20	S	18	50	67	22,3	47,6	52	30x2	10,5	40,7	M10x35	BFX-302-20S-W66
			5075	5075	.63	.79		.71	1.97	2.64	.88	1.87	2.05			.41		
19	3/4		160	160	19	22	L	18	50	67	22,3	47,6	52	30x2	10,5	42,4	M10x35	BFX-302-22L-W66
			2320	2320	.75	.87		.71	1.97	2.64	.88	1.87	2.05			.41		
25	1		250	315	16	20	S	18	54	72	26,2	52,4	55	30x2	10,5	52,5	M10x35	BFX-303-20S-W66
			3625	4568	.63	.79		.71	2.13	2.83	1.03	2.06	2.17			.41		
25	1		250	315	20	25	S	18	54	72	26,2	52,4	55	36x2	10,5	56,1	M10x35	BFX-303-25S-W66
			3625	4568	.79	.98		.71	2.13	2.83	1.03	2.06	2.17			.41		
25	1		160	160	23	28	L	18	54	72	26,2	52,4	55	36x2	10,5	52,5	M10x35	BFX-303-28L-W66
			2320	2320	.91	1.10		.71	2.13	2.83	1.03	2.06	2.17			.41		
32	1-1/4		200	250	20	25	S	21	68	82	30,2	58,7	60	36x2	11,5 (13,5)	81,0	M10x40 (M12x40)	BFX-304-25S-W66
			2900	3625	.79	.98		.83	2.68	3.23	1.19	2.31	2.36			.45 (.53)		
32	1-1/4		200	250	25	30	S	21	68	82	30,2	58,7	60	42x2	11,5 (13,5)	69,7	M10x40 (M12x40)	BFX-304-30S-W66
			2900	3625	.98	1.18		.83	2.68	3.23	1.19	2.31	2.36			.45 (.53)		
32	1-1/4		160	160	30	35	L	21	68	82	30,2	58,7	60	45x2	11,5 (13,5)	80,1	M10x40 (M12x40)	BFX-304-35L-W66
			2320	2320	1.18	1.38		.83	2.68	3.23	1.19	2.31	2.36			.45 (.53)		
38	1-1/2		200	200	32	38	S	25	74	96	35,7	69,9	70	52x2	13,5 (14,5)	130,5	M12x45 (M14x45)	BFX-305-38S-W66
			2900	2900	1.26	1.50		.98	2.91	3.78	1.41	2.75	2.76			.53 (.57)		
38	1-1/2		160	160	36	42	L	25	74	96	35,7	69,9	70	52x2	13,5 (14,5)	121,2	M12x45 (M14x45)	BFX-305-42L-W66
			2320	2320	1.42	1.65		.98	2.91	3.78	1.41	2.75	2.76			.53 (.57)		

### Materials / Ordering Options / Examples

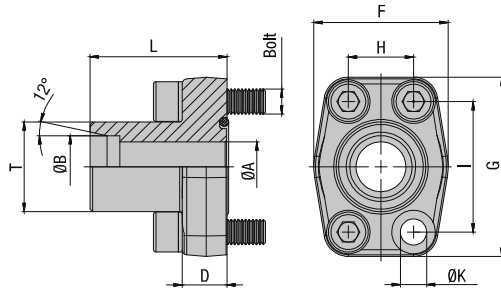
- \* SAE Single-Part Flange (without O-ring) made of Steel S355J0 / C45 or equivalent, zinc-plated and thick-film-passivated **BFX-...-...-W66**
- \* SAE Single-Part Flange (without O-ring) made of Stainless Steel V4A – 1.4404 (on request) **BFX-...-...-W5**
- \* Kit including Metric bolts 8.8, spring rings, O-ring made of NBR (Buna-N®) **BFX-...-...-W66-K**
- \* Kit including Metric bolts 8.8, spring rings, O-ring made of FKM (Viton®) **BFX-...-...-V-W66-K**
- \* Kit including Metric bolts 10.9, spring rings, O-ring made of NBR (Buna-N®) **BFX-...-...-MH-W129-K**

Please always indicate ØB and Series.

<sup>1</sup> The maximum working pressure PN (bar/PSI) applies only to the flange itself and depends on the bolts used (Grade 8.8 / 10.9). The actual maximum working pressure depends on the thickness and the quality of the tube used.

<sup>3</sup> Alternative options shown in brackets are available on request.



**SAE Single-Part Flange with Male Metric Thread and 24° Conical Bore (acc. to ISO 8434-1)  
Type BFX-L/S = 6000 PSI Series**


6000 PSI High Pressure Series (based on ISO 6162-2:2002)

**C**

Nominal Size	DN	(in)	PN <sup>1</sup> ( <sup>bar</sup> /PSI)		Dimensions (mm/in)		Series	D	F	G	H	I	L	T (Metric)	ØK	Weight ( <sup>kg</sup> /lbs) ca. per 100	for Bolts Metric	Ordering Codes
			8.8	10.9 (MH)	ØA	ØB												
13	1/2		350	420	12	16	S	16	43	57	18,2	40,5	47	24x1,5	8,7	27,3	M8x30	BFX-601-16S-W66
			5075	6090	.47	.63		.63	1.69	2.24	.72	1.59	1.85		.34	60.06		
19	3/4		350	420	12	16	S	18	54	72	23,8	50,8	54	24x1,5	10,5	53,2	M10x35	BFX-602-16S-W66
			5075	6090	.47	.63		.71	2.13	2.83	.94	2.00	2.13		.41	117.04		
19	3/4		350	400	16	20	S	18	54	72	23,8	50,8	54	30x2	10,5	52,7	M10x35	BFX-602-20S-W66
			5075	5800	.63	.79		.71	2.13	2.83	.94	2.00	2.13		.41	115.94		
19	3/4		350	400	18	25	S	18	54	72	23,8	50,8	54	36x2	10,5	56,8	M10x35	BFX-602-25S-W66
			5075	5800	.71	.98		.71	2.13	2.83	.94	2.00	2.13		.41	124.96		
25	1		350	400	16	20	S	21	68	82	27,8	57,2	60	30x2	13	76,1	M12x40	BFX-603-20S-W66
			5075	5800	.63	.79		.83	2.68	3.23	1.09	2.25	2.36		.51	167.42		
25	1		350	400	18	25	S	21	68	82	27,8	57,2	60	36x2	13	79,0	M12x40	BFX-603-25S-W66
			5075	5800	.71	.98		.83	2.68	3.23	1.09	2.25	2.36		.51	173.80		
25	1		350	400	25	30	S	21	68	82	27,8	57,2	60	42x2	13	82,4	M12x40	BFX-603-30S-W66
			5075	5800	.98	1.18		.83	2.68	3.23	1.09	2.25	2.36		.51	181.28		
32	1-1/4		350	400	25	30	S	24	75	95	31,8	66,6	68	42x2	13,5	118,2	M12x45	BFX-604-30S-W66
			5075	5800	.98	1.18		.94	2.95	3.74	1.25	2.62	2.68		.53	260.04		
32	1-1/4		350	400	25	30	S	24	75	95	31,8	66,6	68	42x2	15	117,4	M14x45	BFX-604-30S-M14-W66
			5075	5800	.98	1.18		.94	2.95	3.74	1.25	2.62	2.68		.59	258.28		
32	1-1/4		350	350	29	38	S	27	75	95	31,8	66,6	92	52x2	13,5	124,5	M12x45	BFX-604-38S-W66
			5075	5075	1.14	1.50		1.06	2.95	3.74	1.25	2.62	3.62		.53	273.90		
32	1-1/4		350	350	29	38	S	27	75	95	31,8	66,6	92	52x2	15	121,6	M14x45	BFX-604-38S-M14-W66
			5075	5075	1.14	1.50		1.06	2.95	3.74	1.25	2.62	3.62		.59	267.52		
38	1-1/2		350	350	32	38	S	27	84	108	36,5	79,3	72	52x2	17	170,7	M16x50	BFX-605-38S-W66
			5075	5075	1.26	1.50		1.06	3.31	4.25	1.44	3.12	2.83		.67	375.54		

<sup>1</sup> The maximum working pressure PN (bar/PSI) applies only to the flange itself and depends on the bolts used (Grade 8.8 / 10.9). The actual maximum working pressure depends on the thickness and the quality of the tube used.

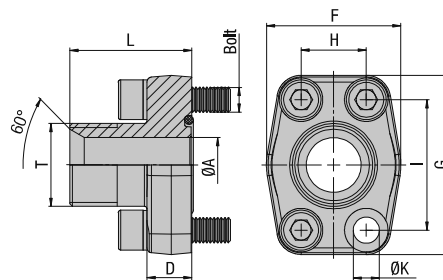
**Materials / Ordering Options / Examples**

- \* SAE Single-Part Flange (without O-ring) made of Steel S355J0 / C45 or equivalent, zinc-plated and thick-film-passivated BFX-...-...-W66
- \* SAE Single-Part Flange (without O-ring) made of Stainless Steel V4A – 1.4404 (on request) BFX-...-...-W5
- \* Kit including Metric bolts 8.8, spring rings, O-ring made of NBR (Buna-N®) BFX-...-...-W66-K
- \* Kit including Metric bolts 8.8, spring rings, O-ring made of FKM (Viton®) BFX-...-...-V-W66-K
- \* Kit including Metric bolts 10.9, spring rings, O-ring made of NBR (Buna-N®) BFX-...-...-MH-W129-K

Please always indicate ØB and Series.



## SAE Single-Part Flange with Male BSPP Thread and 60° Conical Bore (acc. to BS 5200) Type BFX-B - 3000 PSI Series



C

3000 PSI Standard Pressure Series (based on ISO 6162-1:2002)

Nominal Size	DN	(in)	PN <sup>1</sup> ( <sup>bar</sup> / <sub>PSI</sub> )		Dimensions ( <sup>mm</sup> / <sub>in</sub> )							T (BSPP)	ØK <sup>3</sup>	Weight ( <sup>kg</sup> / <sub>lbs</sub> ) ca. per 100	for Bolts Metric <sup>3</sup>	Ordering Codes
			8.8	10.9 (MH)	ØA	D	F	G	H	I	L					
13	1/2	350	350	350	10	16	43	57	17,5	38	37	3/8 (06)	8,7	22,6	M8x30	BFX-301-B06-W66
			5075	5075	.39	.63	1.69	2.24	.69	1.50	1.46	.34	49.72			
13	1/2	350	350	350	12	16	43	57	17,5	38	39	1/2	8,7	23,6	M8x30	BFX-301-B-W66
			5075	5075	.47	.63	1.69	2.24	.69	1.50	1.54	.34	51.92			
13	1/2	350	350	350	13	16	43	57	17,5	38	42	3/4 (12)	8,7	25,6	M8x30	BFX-301-B12-W66
			5075	5075	.51	.63	1.69	2.24	.69	1.50	1.65	.34	56.32			
19	3/4	350	350	350	12	18	50	67	22,3	47,6	42	1/2 (08)	10,5	37,3	M10x35	BFX-302-B08-W66
			5075	5075	.47	.71	1.97	2.64	.88	1.87	1.65	.41	82.06			
19	3/4	350	350	350	17	18	50	67	22,3	47,6	45	3/4	10,5	39,8	M10x35	BFX-302-B-W66
			5075	5075	.67	.71	1.97	2.64	.88	1.87	1.77	.41	87.56			
19	3/4	350	350	350	19	18	50	67	22,3	47,6	47	1 (16)	10,5	43,4	M10x35	BFX-302-B16-W66
			5075	5075	.75	.71	1.97	2.64	.88	1.87	1.85	.41	95.48			
25	1	250	315	315	17	18	54	72	26,2	52,4	47	3/4 (12)	10,5	46,0	M10x35	BFX-303-B12-W66
			3625	4568	.67	.71	2.13	2.83	1.03	2.06	1.85	.41	101.20			
25	1	250	315	315	22	18	54	72	26,2	52,4	49	1	10,5	47,3	M10x35	BFX-303-B-W66
			3625	4568	.87	.71	2.13	2.83	1.03	2.06	1.93	.41	104.06			
25	1	250	315	25	18	54	72	26,2	52,4	49	1-1/4 (20)	10,5	53,3	M10x35	BFX-303-B20-W66	
			3625	4568	.98	.71	2.13	2.83	1.03	2.06	1.93	.41	117.26			
32	1-1/4	200	250	22	21	68	82	30,2	58,7	53	1 (16)	11,5 (13,5)	71,5	M10x40 (M12x40)	BFX-304-B16-W66	
			2900	3625	.87	.83	2.68	3.23	1.19	2.31	2.09	.45 (.53)	157.30			
32	1-1/4	200	250	27	21	68	82	30,2	58,7	55	1-1/4	11,5 (13,5)	77,0	M10x40 (M12x40)	BFX-304-B-W66	
			2900	3625	1.06	.83	2.68	3.23	1.19	2.31	2.17	.45 (.53)	169.40			
32	1-1/4	200	250	31	21	68	82	30,2	58,7	55	1-1/2 (24)	11,5 (13,5)	88,2	M10x40 (M12x40)	BFX-304-B24-W66	
			2900	3625	1.22	.83	2.68	3.23	1.19	2.31	2.17	.45 (.53)	194.04			
38	1-1/2	200	200	27	24	74	96	35,7	69,9	59	1-1/4 (20)	13,5 (14,5)	78,6	M12x45 (M14x45)	BFX-305-B20-W66	
			2900	2900	1.06	.94	2.91	3.78	1.41	2.75	2.32	.53 (.57)	172.92			
38	1-1/2	200	200	34	24	74	96	35,7	69,9	61	1-1/2	13,5 (14,5)	107,8	M12x45 (M14x45)	BFX-305-B-W66	
			2900	2900	1.34	.94	2.91	3.78	1.41	2.75	2.40	.53 (.57)	237.16			
38	1-1/2	200	200	38	24	74	96	35,7	69,9	63	2 (32)	13,5 (14,5)	123,1	M12x45 (M14x45)	BFX-305-B32-W66	
			2900	2900	1.50	.94	2.91	3.78	1.41	2.75	2.48	.53 (.57)	270.82			
51	2	160	200	34	25	88	102	42,9	77,8	69	1-1/2 (24)	13,5 (14,5)	154,9	M12x45 (M14x45)	BFX-306-B24-W66	
			2320	2900	1.34	.98	3.46	4.02	1.69	3.06	2.72	.53 (.57)	340.78			
51	2	160	200	42	25	88	102	42,9	77,8	69	2	13,5 (14,5)	155,4	M12x45 (M14x45)	BFX-306-B-W66	
			2320	2900	1.65	.98	3.46	4.02	1.69	3.06	2.72	.53 (.57)	341.88			

### Materials / Ordering Options / Examples

\* SAE Single-Part Flange (without O-ring) made of Steel S355J0 / C45 or equivalent, zinc-plated and thick-film-passivated

BFX-...-B-W66

\* SAE Single-Part Flange (without O-ring) made of Stainless Steel V4A – 1.4404 (on request)

BFX-...-B-W5

\* Size of connection thread deviating from the standard (e.g. 1-1/4 BSPP)

BFX-...-B20-W66

\* Kit including Metric bolts 8.8, spring rings, O-ring made of NBR (Buna-N®)

BFX-...-B-W66-K

\* Kit including Metric bolts 8.8, spring rings, O-ring made of FKM (Viton®)

BFX-...-B-V-W66-K

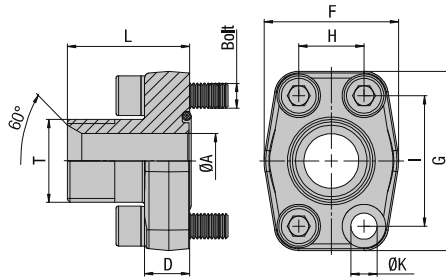
\* Kit including Metric bolts 10.9, spring rings, O-ring made of NBR (Buna-N®)

BFX-...-B-MH-W129-K

<sup>1</sup> The maximum working pressure PN (bar/PSI) applies only to the flange itself and depends on the bolts used (Grade 8.8 / 10.9). The actual maximum working pressure depends on the thickness and the quality of the tube used.

<sup>3</sup> Alternative options shown in brackets are available on request.



**SAE Single-Part Flange with Male BSPP Thread and 60° Conical Bore (acc. to BS 5200)  
Type BFX-B = 6000 PSI Series**

**C**
**6000 PSI High Pressure Series (based on ISO 6162-2:2002)**

Nominal Size	PN <sup>1</sup> ( <sup>bar</sup> / <sub>PSI</sub> )	PN		Dimensions (mm/in)							T (BSPP)	ØK	Weight ( <sup>kg</sup> / <sub>lbs</sub> ) ca. per 100	for Bolts Metric	Ordering Codes
		8.8	10.9 (MH)	ØA	D	F	G	H	I	L					
13	1/2	350	420	10	16	43	57	18,2	40,5	38	3/8 (06)	8,7	21,7	M8x30	BFX-601-B06-W66
		5075	6090	.39	.63	1.69	2.24	.72	1.59	1.50		.34	47.74		
13	1/2	350	420	12	16	43	57	18,2	40,5	40	1/2	8,7	23,7	M8x30	BFX-601-B-W66
		5075	6090	.47	.63	1.69	2.24	.72	1.59	1.57		.34	52.14		
13	1/2	350	420	13	16	43	57	18,2	40,5	43	3/4 (12)	8,7	27,5	M8x30	BFX-601-B12-W66
		5075	6090	.51	.63	1.69	2.24	.72	1.59	1.69		.34	60.50		
19	3/4	350	420	12	18	54	72	23,8	50,8	44	1/2 (08)	10,5	43,5	M10x35	BFX-602-B08-W66
		5075	6090	.47	.71	2.13	2.83	.94	2.00	1.73		.41	95.70		
19	3/4	350	420	17	18	54	72	23,8	50,8	47	3/4	10,5	44,9	M10x35	BFX-602-B-W66
		5075	6090	.67	.71	2.13	2.83	.94	2.00	1.85		.41	98.78		
19	3/4	350	420	19	18	54	72	23,8	50,8	49	1 (16)	10,5	50,9	M10x35	BFX-602-B16-W66
		5075	6090	.75	.71	2.13	2.83	.94	2.00	1.93		.41	111.98		
25	1	350	420	17	21	68	82	27,8	57,2	54	3/4 (12)	13	68,7	M12x40	BFX-603-B12-W66
		5075	6090	.67	.83	2.68	3.23	1.09	2.25	2.13		.51	151.14		
25	1	350	420	22	21	68	82	27,8	57,2	56	1	13	71,3	M12x40	BFX-603-B-W66
		5075	6090	.87	.83	2.68	3.23	1.09	2.25	2.20		.51	156.86		
25	1	350	420	25	21	68	82	27,8	57,2	56	1-1/4 (20)	13	79,0	M12x40	BFX-603-B20-W66
		5075	6090	.98	.83	2.68	3.23	1.09	2.25	2.20		.51	173.80		
32	1-1/4	350	420	22	24	75	95	31,8	66,6	61	1 (16)	13,5	116,7	M12x45	BFX-604-B16-W66
		5075	6090	.87	.94	2.95	3.74	1.25	2.62	2.40		.53	256.74		
32	1-1/4	350	420	22	24	75	95	31,8	66,6	61	1 (16)	15	106,9	M14x45	BFX-604-B16-M14-W66
		5075	6090	.87	.94	2.95	3.74	1.25	2.62	2.40		.59	235.18		
32	1-1/4	350	420	27	24	75	95	31,8	66,6	61	1-1/4	13,5	116,7	M12x45	BFX-604-B-W66
		5075	6090	1.06	.94	2.95	3.74	1.25	2.62	2.40		.53	256.74		
32	1-1/4	350	420	27	24	75	95	31,8	66,6	61	1-1/4	15	110,3	M14x45	BFX-604-B-M14-W66
		5075	6090	1.06	.94	2.95	3.74	1.25	2.62	2.40		.59	242.66		
32	1-1/4	350	420	31	24	75	95	31,8	66,6	63	1-1/2 (24)	13,5	106,9	M12x45	BFX-604-B24-W66
		5075	6090	1.22	.94	2.95	3.74	1.25	2.62	2.48		.53	235.18		
32	1-1/4	350	420	31	24	75	95	31,8	66,6	63	1-1/2 (24)	15	114,5	M14x45	BFX-604-B24-M14-W66
		5075	6090	1.22	.94	2.95	3.74	1.25	2.62	2.48		.59	251.90		
38	1-1/2	350	420	27	27	84	108	36,5	79,3	65	1-1/4	17	157,9	M16x50	BFX-605-B20-W66
		5075	6090	1.06	1.06	3.31	4.25	1.44	3.12	2.56		.67	347.38		
38	1-1/2	350	420	32	27	84	108	36,5	79,3	67	1-1/2	17	156,5	M16x50	BFX-605-B-W66
		5075	6090	1.26	1.06	3.31	4.25	1.44	3.12	2.64		.67	344.30		

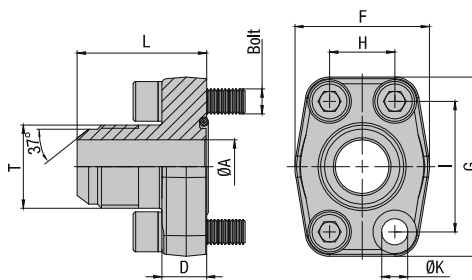
<sup>1</sup> The maximum working pressure PN (bar/PSI) applies only to the flange itself and depends on the bolts used (Grade 8.8 / 10.9). The actual maximum working pressure depends on the thickness and the quality of the tube used.

**Materials / Ordering Options / Examples**

- \* SAE Single-Part Flange (without O-ring) made of Steel S355J0 / C45 or equivalent, zinc-plated and thick-film-passivated BFX-...-B-W66
- \* SAE Single-Part Flange (without O-ring) made of Stainless Steel V4A – 1.4404 (on request) BFX-...-B-W5
- \* Size of connection thread deviating from the standard (e.g. 1-1/4 BSPP) BFX-...-B20-W66
- \* Kit including Metric bolts 8.8, spring rings, O-ring made of NBR (Buna-N®) BFX-...-B-W66-K
- \* Kit including Metric bolts 8.8, spring rings, O-ring made of FKM (Viton®) BFX-...-B-V-W66-K
- \* Kit including Metric bolts 10.9, spring rings, O-ring made of NBR (Buna-N®) BFX-...-B-MH-W129-K



## SAE Single-Part Flange with Male UN/UNF Thread and 37° JIC Taper (acc. to ISO 8434-2 / SAE J514) Type BFX-J = 3000 / 6000 PSI Series



### 3000 PSI Standard Pressure Series (based on ISO 6162-1:2002)

Nominal Size	PN <sup>1</sup> ( <sup>bar</sup> / <sup>PSI</sup> )	Dimensions ( <sup>mm</sup> / <sup>in</sup> )										Weight ( <sup>kg</sup> / <sup>lbs</sup> ) ca. per 100	for Bolts		Ordering Codes	
		DN	(in)	8.8	10.9 (MH)	ØA	D	F	G	H	I		L	T (UN/UNF)		ØK <sup>3</sup>
13	1/2	350	350	9.9	16	43	57	17,5	38,1	41	3/4-16 (08)	8,7	24,4	M8x30	5/16-18 UNC x 1-1/4	BFX-301-J08-W66
		5075	5075	.39	.63	1.69	2.24	.69	1.50	1.61		.34	53.68			
13	1/2	350	350	12,3	16	43	57	17,5	38,1	41	7/8-14 (10)	8,7	24,2	M8x30	5/16-18 UNC x 1-1/4	BFX-301-J10-W66
		5075	5075	.48	.63	1.69	2.24	.69	1.50	1.61		.34	53.24			
19	3/4	350	350	15,5	18	50	67	22,3	47,6	49	1-1/16-12 (12)	10,5	42,2	M10x35	3/8-16 UNC x 1-1/2	BFX-302-J12-W66
		5075	5075	.61	.71	1.97	2.64	.88	1.87	1.93		.41	92.84			
25	1	250	315	21,5	18	54	72	26,2	52,4	52	1-5/16-12 (16)	10,5	48,8	M10x35	3/8-16 UNC x 1-1/2	BFX-303-J16-W66
		3625	4568	.85	.71	2.13	2.83	1.03	2.06	2.05		.41	107.36			
32	1-1/4	200	200	21,5	21	68	82	30,2	58,7	56	1-5/16-12 (16)	11,5 (13,5)	73,3	M10x40 (M12x40)	7/16-14 UNC x 1-1/2	BFX-304-J16-W66
		2900	2900	.85	.83	2.68	3.23	1.19	2.31	2.20		.45 (53)	161.26			
32	1-1/4	200	200	27,5	21	68	82	30,2	58,7	58	1-5/8-12 (20)	11,5 (13,5)	77,4	M10x40 (M12x40)	7/16-14 UNC x 1-1/2	BFX-304-J20-W66
		2900	2900	1.08	.83	2.68	3.23	1.19	2.31	2.28		.45 (53)	170.28			
38	1-1/2	160	160	33	24	74	96	35,7	69,9	67	1-7/8-12 (24)	13,5 (14,5)	114,7	M12x45 (M14x45)	7/16-14 UNC x 1-3/4	BFX-305-J24-W66
		2320	2320	1.30	.94	2.91	3.78	1.41	2.75	2.64		.53 (57)	252.34			

### 6000 PSI High Pressure Series (based on ISO 6162-2:2002)

Nominal Size	PN <sup>1</sup> ( <sup>bar</sup> / <sup>PSI</sup> )	Dimensions ( <sup>mm</sup> / <sup>in</sup> )										Weight ( <sup>kg</sup> / <sup>lbs</sup> ) ca. per 100	for Bolts		Ordering Codes	
		DN	(in)	8.8	10.9 (MH)	ØA	D	F	G	H	I		L	T (UN/UNF)		ØK
13	1/2	350	400	9,9	16	43	57	18,2	40,5	42	3/4-16 (08)	8,7	24,0	M8x30	5/16-18 UNC x 1-1/4	BFX-601-J08-W66
		5075	5800	.39	.63	1.69	2.24	.72	1.59	1.65		.34	52.80			
13	1/2	350	400	12,3	16	43	57	18,2	40,5	45	7/8-14 (10)	8,7	25,1	M8x30	5/16-18 UNC x 1-1/4	BFX-601-J10-W66
		5075	5800	.48	.63	1.69	2.24	.72	1.59	1.77		.34	55.22			
19	3/4	350	400	15,5	18	54	72	23,8	50,8	51	1-1/16-12 (12)	10,5	49,2	M10x35	3/8-16 UNC x 1-1/2	BFX-602-J12-W66
		5075	5800	.61	.71	2.13	2.83	.94	2.00	2.01		.41	108.24			
25	1	350	400	21,5	21	68	82	27,8	57,2	59	1-5/16-12 (16)	13	72,9	M12x40	7/16-14 UNC x 1-3/4	BFX-603-J16-W66 <sup>2</sup>
		5075	5800	.85	.83	2.68	3.23	1.09	2.25	2.32		.51	160.38			
32	1-1/4	350	400	21,5	24	75	95	31,6	66,6	64	1-5/16-12 (16)	13,5	107,0	M12x45	1/2-13 UNC x 1-3/4	BFX-604-J16-W66
		5075	5800	.85	.94	2.95	3.74	1.24	2.62	2.52		.53	235.40			
32	1-1/4	350	400	21,5	24	75	95	31,6	66,6	64	1-5/16-12 (16)	15	106,9	M14x45		BFX-604-J16-M14-W66
		5075	5800	.85	.94	2.95	3.74	1.24	2.62	2.52		.59	235.18			
32	1-1/4	350	400	27,5	24	75	95	31,6	66,6	66	1-5/8-12 (20)	13,5	106,9	M12x45	1/2-13 UNC x 1-3/4	BFX-604-J20-W66
		5075	5800	1.08	.94	2.95	3.74	1.24	2.62	2.60		.53	235.18			
32	1-1/4	350	400	27,5	24	75	95	31,6	66,6	66	1-5/8-12 (20)	15	111,7	M14x45		BFX-604-J20-M14-W66
		5075	5800	1.08	.94	2.95	3.74	1.24	2.62	2.60		.59	245.74			
38	1-1/2	350	400	33	27	84	108	36,5	79,3	73	1-7/8-12 (24)	17	160,6	M16x50	5/8-11 UNC x 2	BFX-605-J24-W66
		5075	5800	1.30	1.06	3.31	4.25	1.44	3.12	2.87		.67	353.32			

### Materials / Ordering Options / Examples

- \* SAE Single-Part Flange (without O-ring) made of Steel S355J0 / C45 or equivalent, zinc-plated and thick-film-passivated **BFX-...-J\*\*-W66**
- \* SAE Single-Part Flange (without O-ring) made of Stainless Steel V4A – 1.4404 (on request) **BFX-...-J\*\*-W5**
- \* Kit including Metric bolts 8.8, spring rings, O-ring made of NBR (Buna-N®) **BFX-...-J\*\*-W66-K**
- \* Kit including Metric bolts 8.8, spring rings, O-ring made of FKM (Viton®) **BFX-...-J\*\*-V-W66-K**
- \* Kit including Metric bolts 10.9, spring rings, O-ring made of NBR (Buna-N®) **BFX-...-J\*\*-MH-W129-K**
- \* Kit including UNC bolts (Grade 8), spring rings, O-ring made of NBR (Buna-N®) **BFX-...-J\*\*-U-W129-K**

Please always indicate Thread Size.

<sup>1</sup> The maximum working pressure PN (bar/PSI) applies only to the flange itself and depends on the bolts used (Grade 8.8 / 10.9). The actual maximum working pressure depends on the thickness and the quality of the tube used.

<sup>2</sup> For UNC threaded bolts, use hexagon head bolts only. Please note that these do not belong to our product range.

<sup>3</sup> Alternative options shown in brackets are available on request.

