

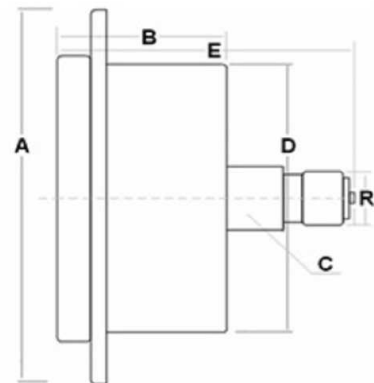
Pressure gauges AISI 316 with glycerin

Pressure gauge DN 63 with glycerin

Pressure gauge DN 63 rear connection

DICSA

1/1



Accuracy: 1,6%

Dimensions: A=83
B=29
C=14
D=62
E=53

Temperature: from -10 up to +60

Fitting and internal components: Stainless steel 316

Case: Stainless steel 304

Part n°	R2	Scale (bar)
ZMFI6304010DB	1/4" BSP	0-10
ZMFI6304016DB	1/4" BSP	0-16
ZMFI6304025DB	1/4" BSP	0-25
ZMFI6304060DB	1/4" BSP	0-60
ZMFI6304160DB	1/4" BSP	0-160
ZMFI6304250DB	1/4" BSP	0-250
ZMFI6304400DB	1/4" BSP	0-400
ZMFI63042.5DB		

With dual bar/psi scale