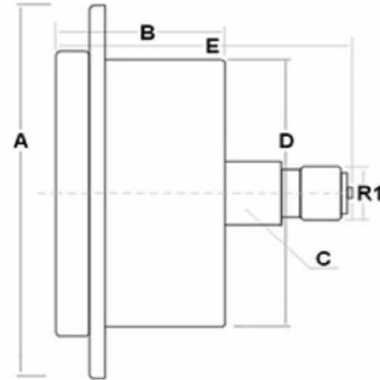


Pressure gauges AISI 316 with glycerin  
 Pressure gauge DN 100 with glycerin

## Pressure gauge DN 100 rear connection

# DICSA

1/1



**Accuracy:** 1,6%

**Dimensions:** A=128  
 B=39  
 C=22  
 D=98,5  
 E=82

**Temperature:** from -10 up to +60

**Fitting and internal components:** Stainless steel 316L

**Case:** Stainless steel 304

Part n°	R2	Scale (bar)
ZMFI10008001DB	1/2" BSP	0-1
ZMFI10008004DB	1/2" BSP	0-4
ZMFI10008006DB	1/2" BSP	0-6
ZMFI10008010DB	1/2" BSP	0-10
ZMFI10008016DB	1/2" BSP	0-16
ZMFI10008025DB	1/2" BSP	0-25
ZMFI10008040DB	1/2" BSP	0-40
ZMFI10008060DB	1/2" BSP	0-60
ZMFI10008100DB	1/2" BSP	0-100
ZMFI10008160DB	1/2" BSP	0-160
ZMFI10008250DB	1/2" BSP	0-250
ZMFI10008400DB	1/2" BSP	0-400

With dual bar/psi scale