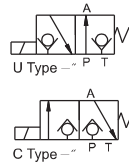


M-SE SERIES DIRECTIONAL BALL VALVES

M-SE series are solenoid operated poppet valves, they are used to control the start, stop and direction of flow.



M - 3 SE 6 U 20 315 G24 N Z4 P B0.8

Mineral hydraulic oil

3=3 actuator ports

4=4 actuator ports

Model

Size 6;10

U=2/3 way normally open; C=2/3 way normally closed

D=2/4 way; Y=2/4 way

Series number

Operating pressure

G24=DC 24V ; W220=AC 220V

No code=Without throttle insert

B0.8=Throttle 0.8mm

B10=Throttle 1.0mm

B12=Throttle 1.2mm

B14=Throttle 1.4mm

B15=Throttle 1.5mm

B18=Throttle 1.8mm

B20=Throttle 2.0mm

B22=Throttle 2.2mm

No code=Without cartridge check valves

P=With cartridge check valves

Z4=Quadrate plug; Z5=Large quadrate plug

No code=Without manual override

N=With manual override

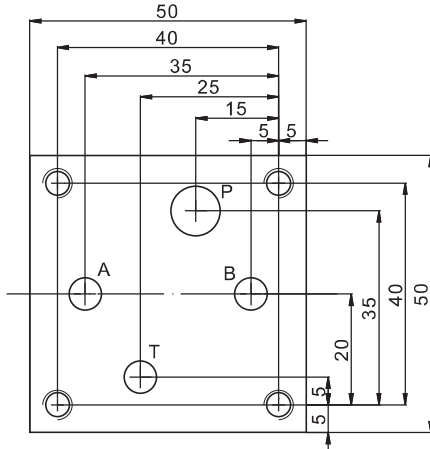
Technical data

Size	6U	6C	6D	6Y	10U	10C	10D	10Y
Rated flow (L/min.)	16	16	12	12	30	24	30	24
Rated pressure (MPa)	31.5							

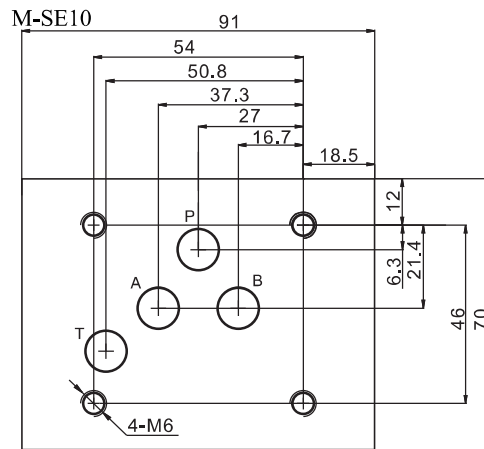



Installation dimensions

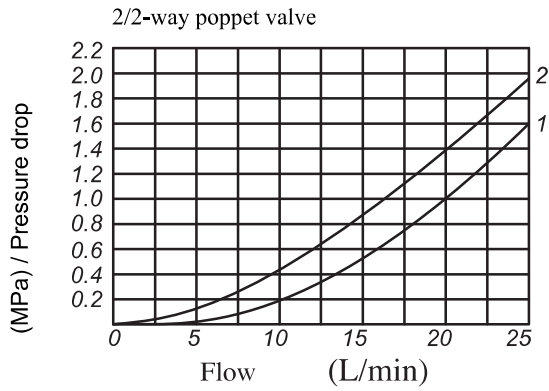
M-SE6



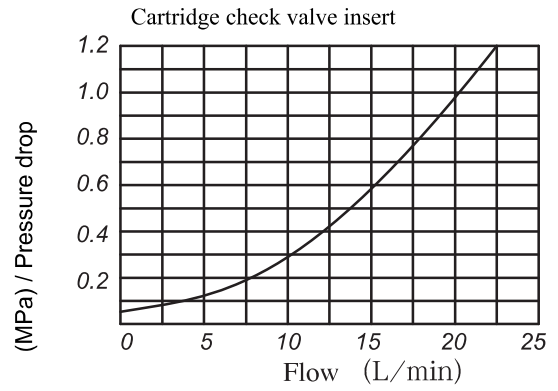
M-SE10



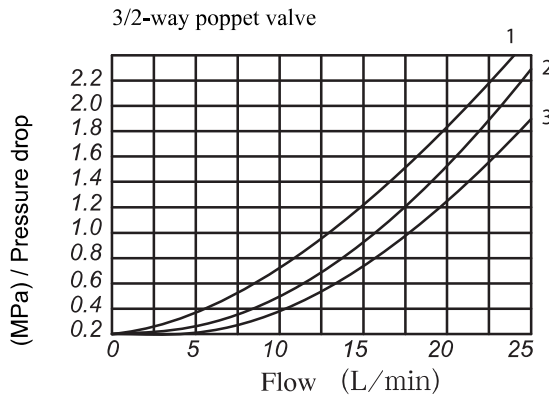
 Pressure drop vs. flow curves



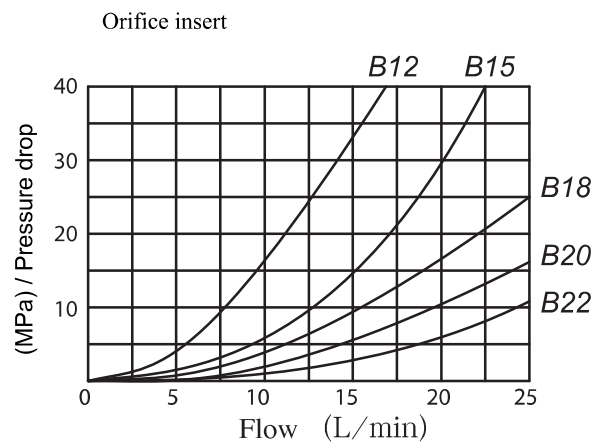
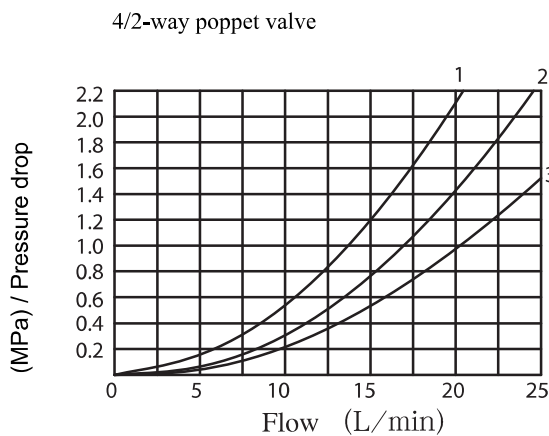
- 1. 2SE6N P-T
- 2. 2SE6P P-T



- 1. 3SE6 U/C A-T
- 2. 3SE6U P-A
- 3. 3SE6C P-A



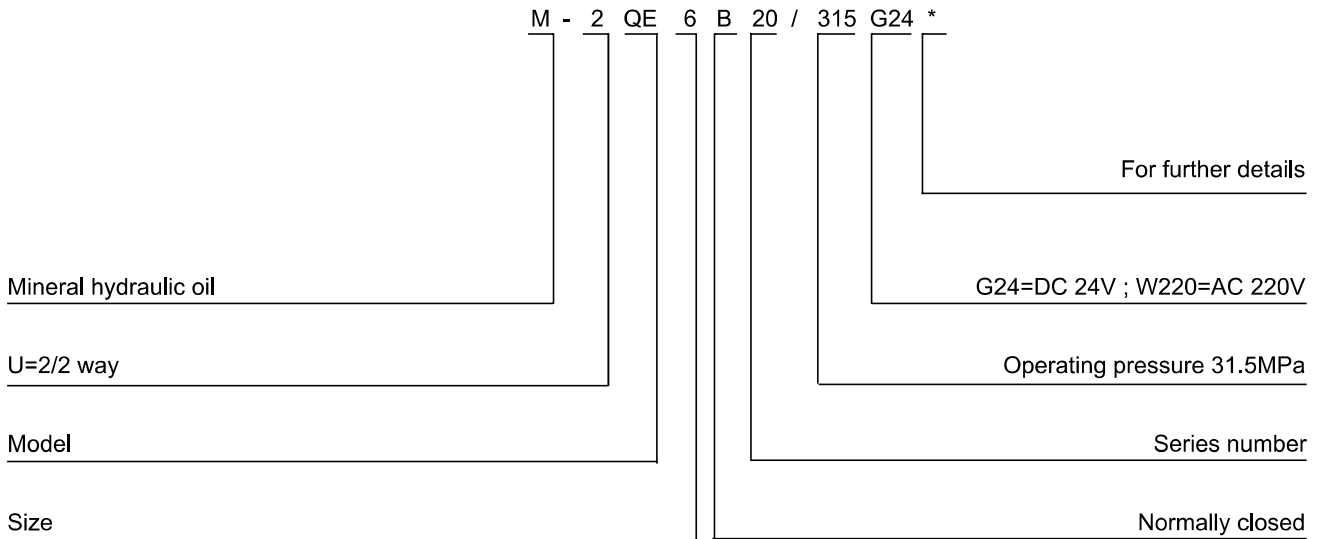
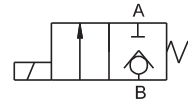
- 1. 4SE6 D/Y A-T
- 2. 4SE6 D/Y P-A
- 3. 4SE6 D/Y P-B, B-T



QE SERIES SOLENOID OPERATED UNLOADING BALL VALVES

QE series solenoid operated unloading ball valve is used to control the opening and closing in pilot return lines.

It is often used for releasing the pressure in pressure-maintaining return lines



Installation dimensions

