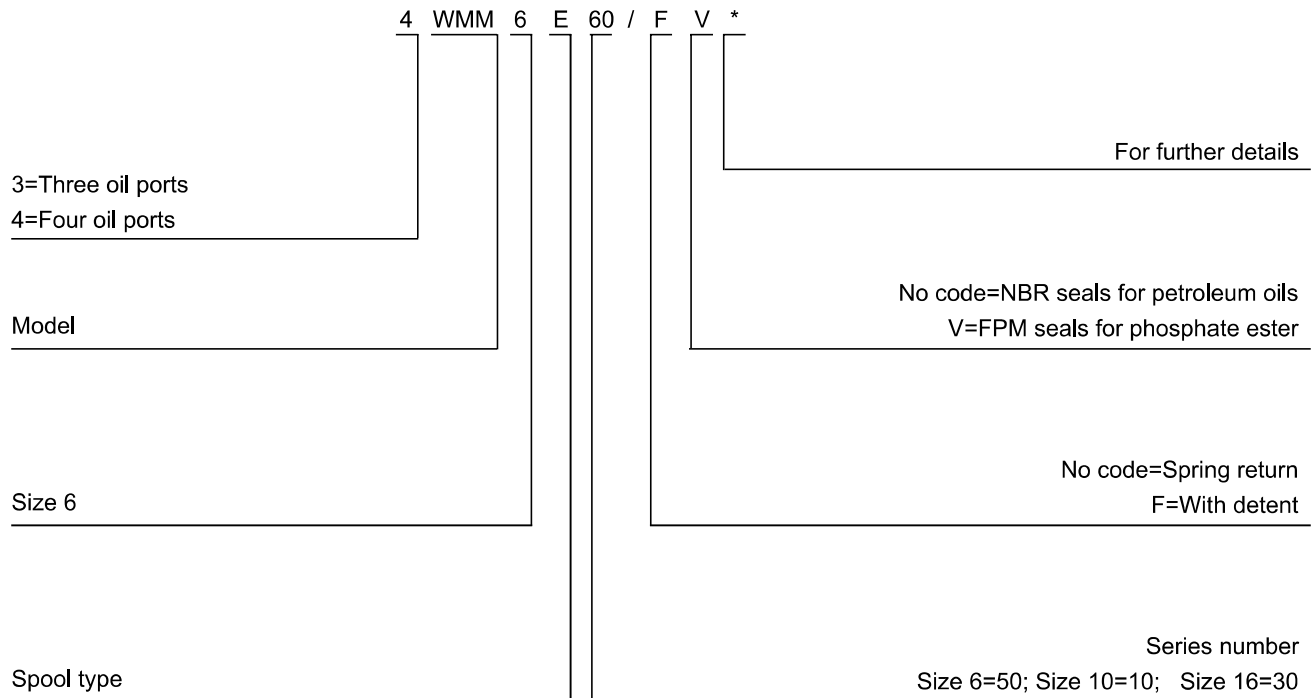


WMM SERIES MANUALLY OPERATED DIRECTIONAL VALVES

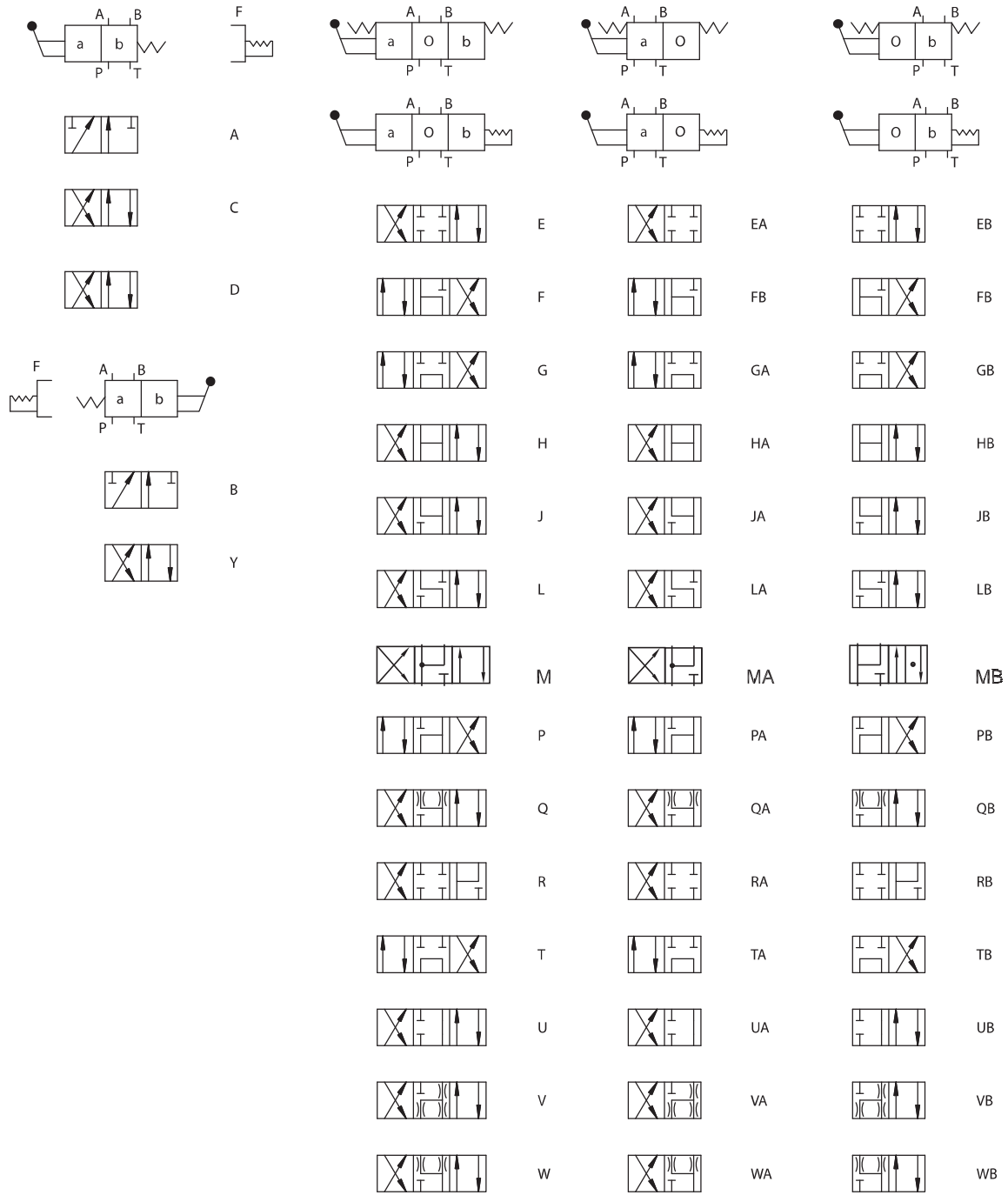
WMM series manually operated directional valves are direct type directional valves, It can control the start, stop & direction of fluid flow. This series with detent or return spring are available.



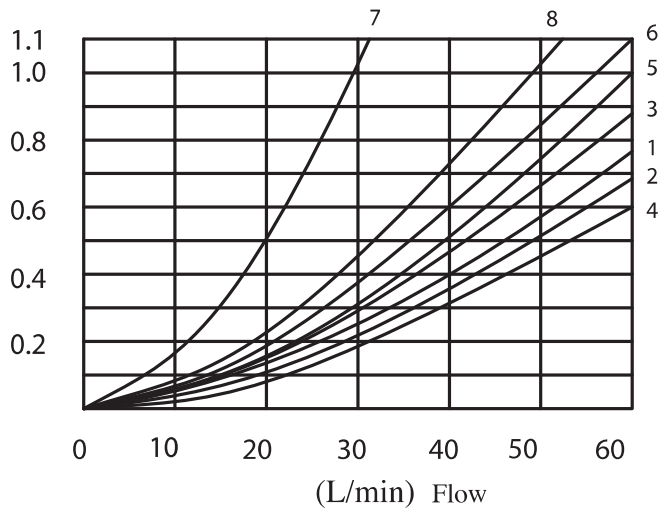
Technical data

Size	6
Flow rate(L/min)	60
Operating pressure (MPa)	A, B,P oil ports 31.5;T oil oil port 16

 WMM Spool symbols



▶ WMM6 Pressure drop vs. flow curves

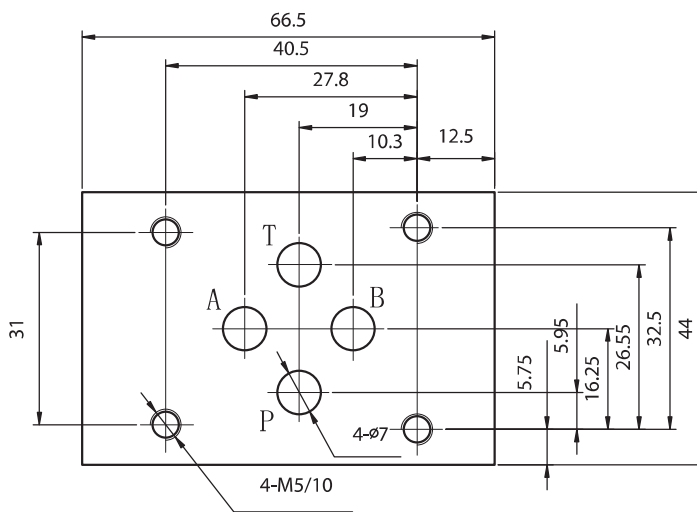


Spool symbols	Flow direction			
	P-A	P-B	A-T	B-T
A	3	3		
B	3	3		
C	1	1	3	1
D	5	5	3	3
E	3	3	1	1
F	2	3	3	5
G	5	3	6	6
H	2	4	2	2
J	1	1	2	1
L	1	1	2	2
M	2	4	3	3
P	2	3	3	5
Q	1	1	2	1
R	5	5	4	
T		3	6	6
U	3	1	3	3
V	1	2	1	1
W	1	1	2	
Y	5	5	3	3

Point 7 is "R" spool on the b position, flow A-B

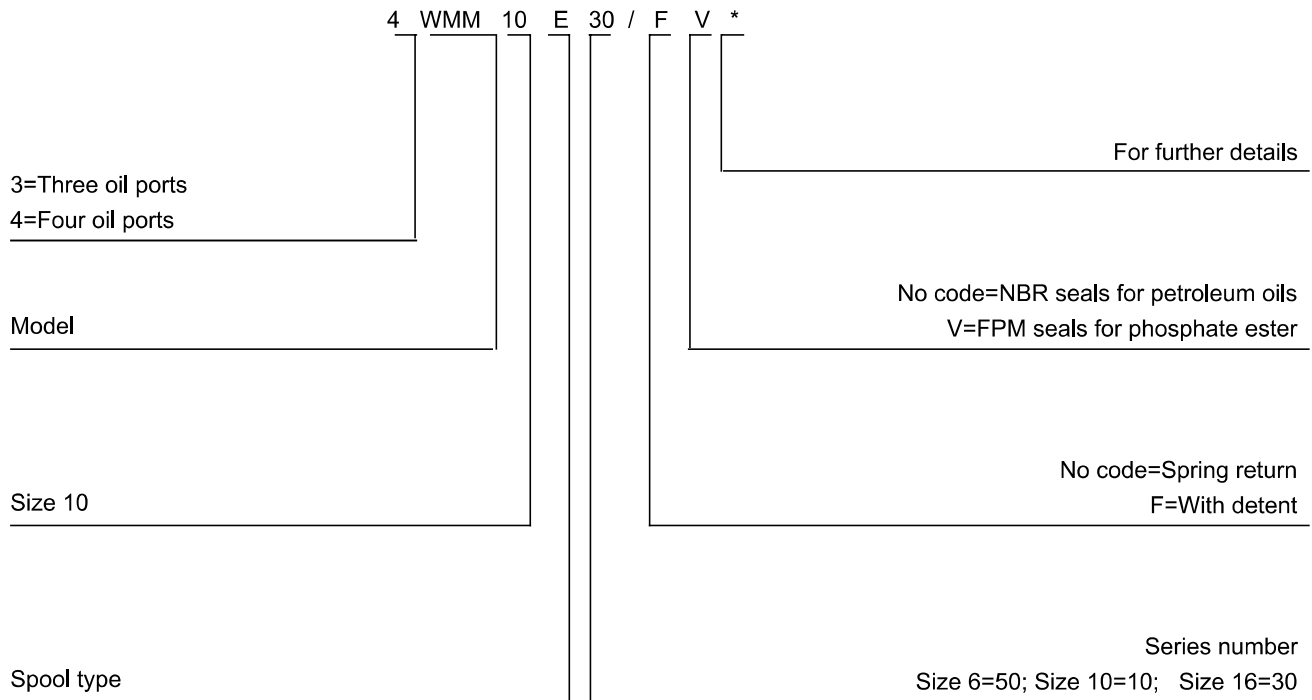
Point 8 is "G" spool on the middle position, flow P-T

▶ 4WMM6 Installation Dimensions



WMM SERIES MANUALLY OPERATED DIRECTIONAL VALVES

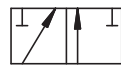
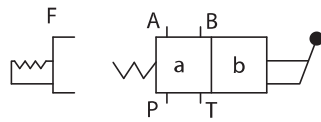
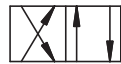
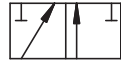
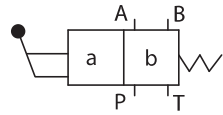
WMM series manually operated directional valves are direct type directional valves, It can control the start, stop & direction of fluid flow. This series with detent or return spring are available.



Technical data

Size	10
Flow rate(L/min)	100
Operating pressure (MPa)	A, B,P oil ports 31.5;T oil oil port 16

 WMM Spool symbols



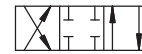
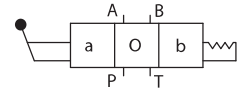
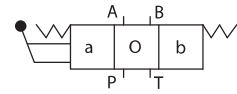
A

C

D

B

Y



E



F



G



H



J



L



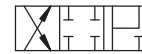
M



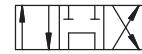
P



Q



R



T



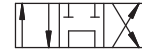
U



V

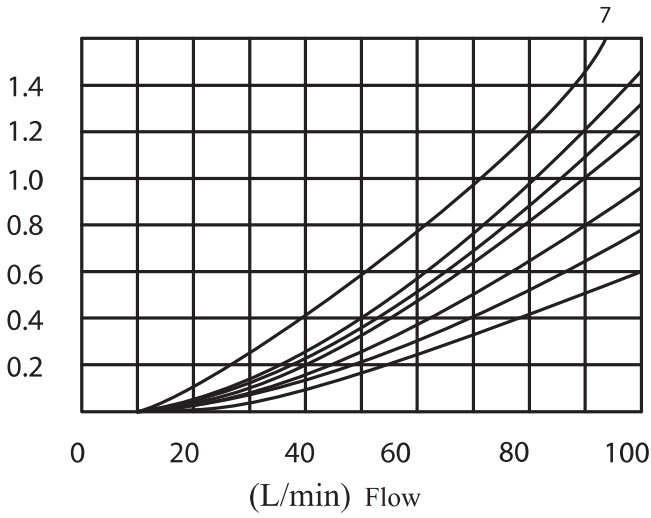


W



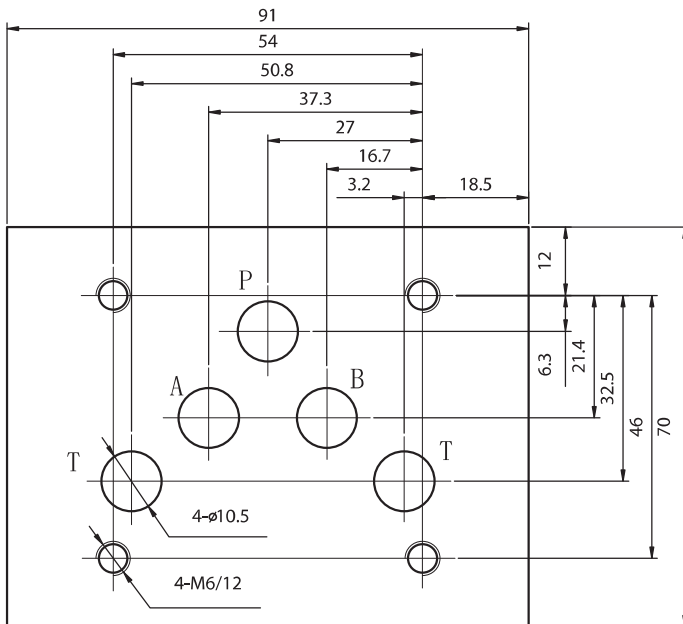
S

▶ WMM10 Pressure drop vs. flow curves



Spool symbols	Flow direction			
	P-A	P-B	A-T	B-T
A	2	2		
B	2	2		
C	2	2	3	3
D	2	2	3	3
E	2	2	4	4
F	2	3	3	5
G	3	3	4	6
H	1	1	4	5
J	2	2	3	3
L	2	2	3	5
M	1	1	5	5
P	3	2	5	3
Q	2	2	4	4
R	2	4	3	
T	3	5	5	6
U	2	2	3	5
V	2	2	4	4
W	2	2	5	5
Y	2	2	3	3

▶ 4WMM10 Installation Dimensions

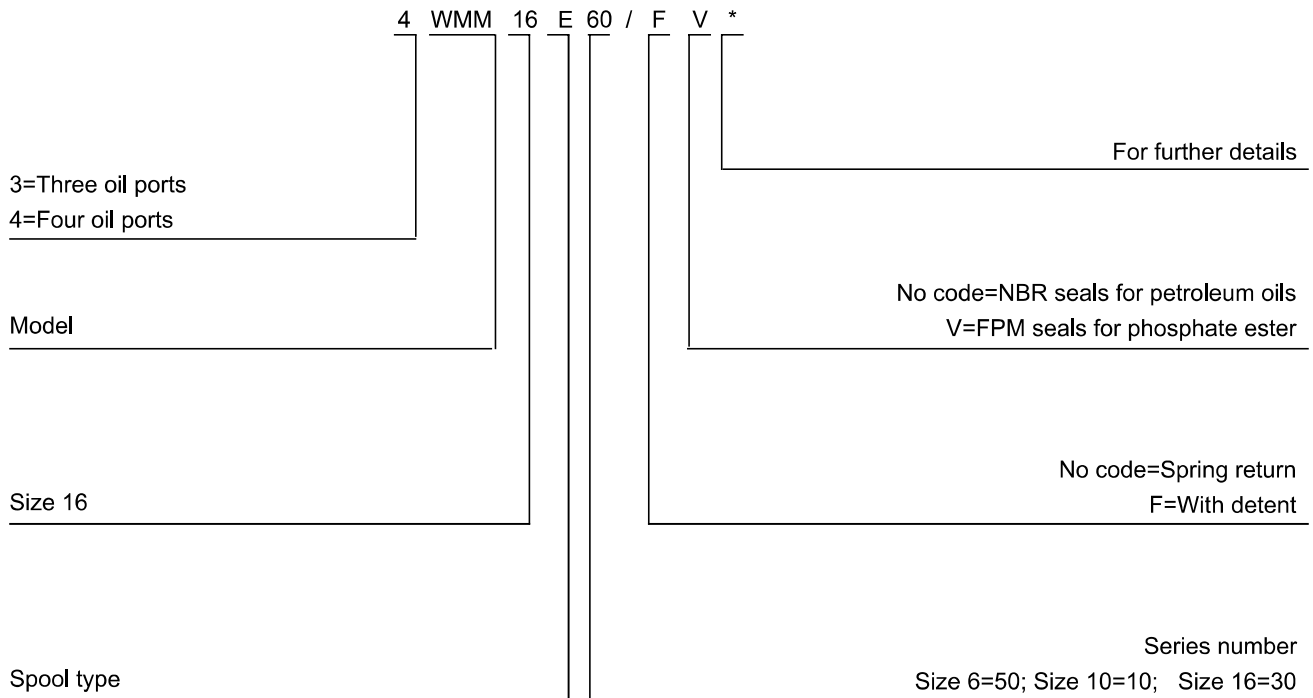


Point 7 is "R" spool on the b position, flow A-B

Point 4 is "G" spool on the middle position, flow P-T

WMM SERIES MANUALLY OPERATED DIRECTIONAL VALVES

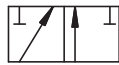
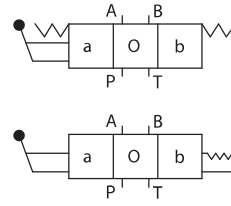
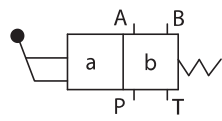
WMM series manually operated directional valves are direct type directional valves, It can control the start, stop & direction of fluid flow. This series with detent or return spring are available.



Technical data

Size	16	25
Flow rate(L/min)	300	650
Operating pressure (MPa)	A, B,P oil ports 31.5;T oil oil port 16	

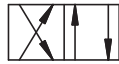
 WMM Spool symbols



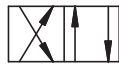
A



C



D



K



Z



E



F



G



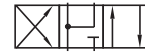
H



J



L



M



P



Q



R



T



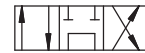
U



V



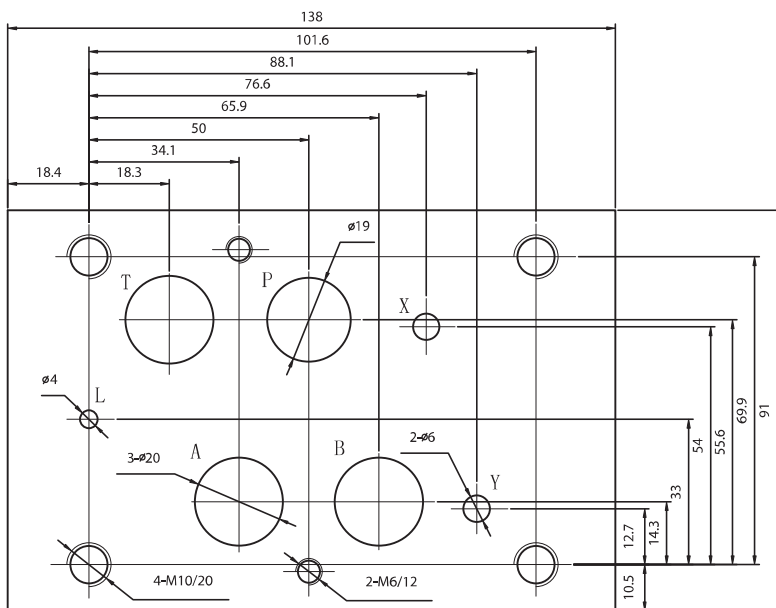
W



S

Note: Only WMM16 with S

 4WMM16 Installation Dimensions



▶ 4WMM25 Installation Dimensions

