

PNEUMATIC PUMPS WITH 1,7 AND 2,7 LITRE RESERVOIRS

DESCRIPTION:

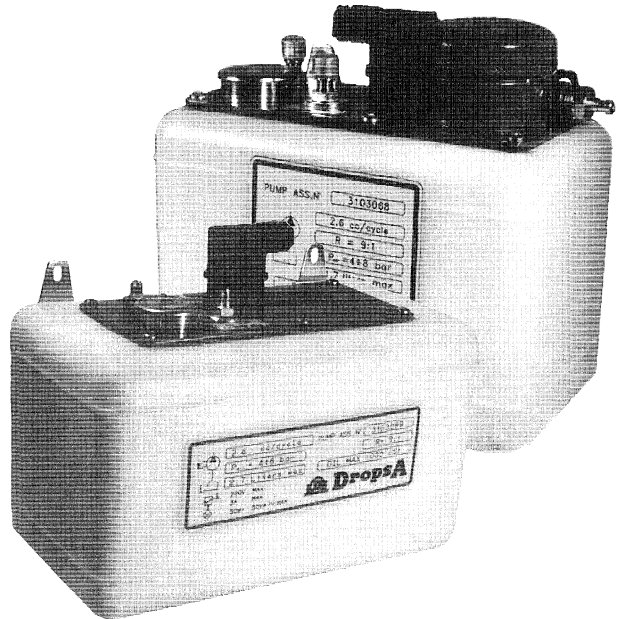
The pump develops oil pressure (ratio 9:1) when air is supplied at the air connection port. Oil pressure is maintained until air pressure is removed; this represents one pump cycle.

An air discharge is required (usually on the solenoid) in order to reset the pump for subsequent cycles.

SPECIFICATION:

Pump:

- Ratio:** 9:1
- Drive Air Pressure:** 3 - 8 bar (76 - 116 psi.)
- Air Inlet:** Tube Ø4
- Delivery:** 2,6 cm³ per cycle.
- Operating Pressure:** 25 - 80 bar (362 - 1160 psi.)
- Min. Pause Time:** 40 seconds
- Lubricant:** Oil 1000 cSt Max.
at room temperature.
- Lubricant Outlet:** Tube Ø4
- Working Temperature:** -20° to +50°C.
- Reservoir Capacity:** 1,7 or 2,7 litres.



- Reservoir Material:** Moplen - RO ZB5015
- Oil Return Filter:** Paper Filter with Filtering degree 10 micron.
- Low Level Indicator:**
- Operating Power:** 50W - 50VA Max.
- Voltage:** 220V ac. 150V dc. Max.
- Current:** 3A Max.

INSTALLATION:

Dimensions: Refer to fig.1.

Fixing Details:

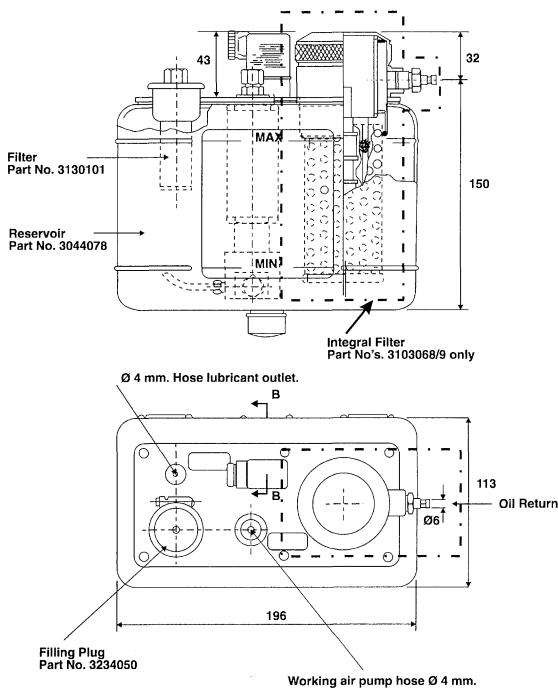
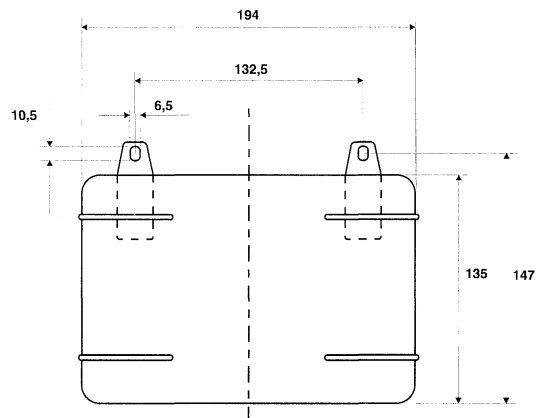


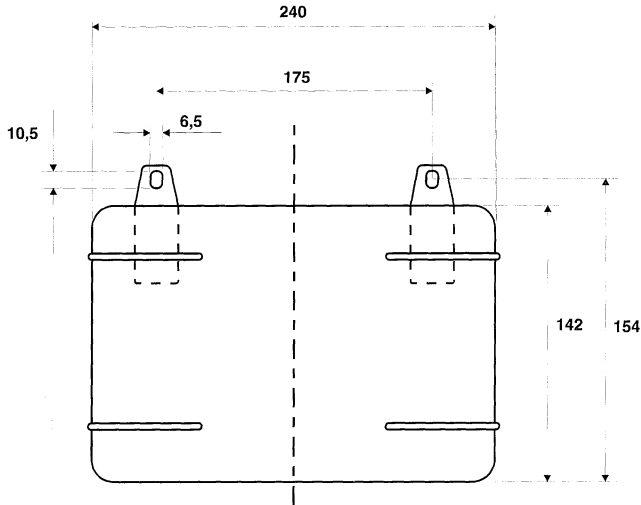
Fig 1.



Fixing details 1,7 litre reservoir

PNEUMATIC PUMPS WITH 1,7 AND 2,7 LITRE RESERVOIRS

FIXING DETAILS



Fixing details 2,7 litre reservoir

ORDERING INFORMATION:

Part No	reservoir	oil filter
3103088	1,7 litre	NO
3103089	2,7 litre	NO
3103068	1,7 litre	YES
3103069	2,7 litre	YES

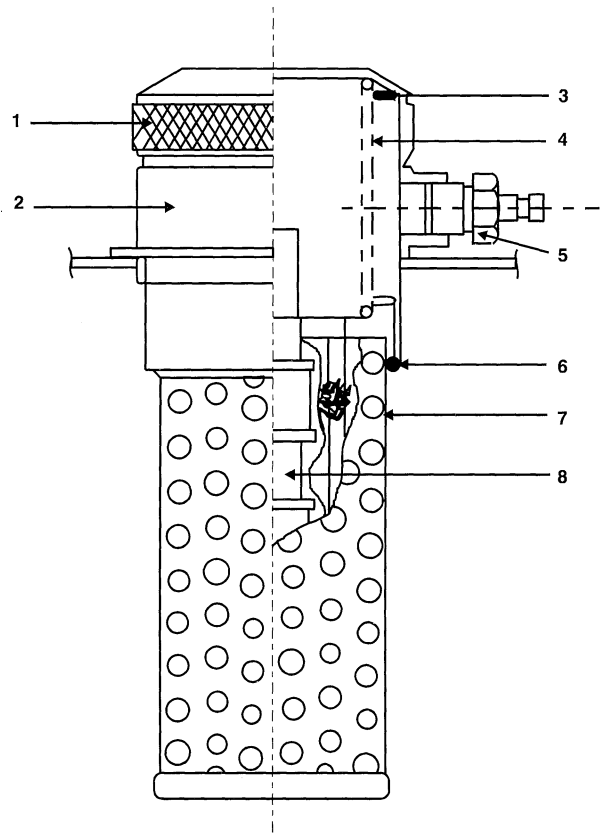
SPARES

Filter details (Pump Part No. 3103068 and 3103069 only)

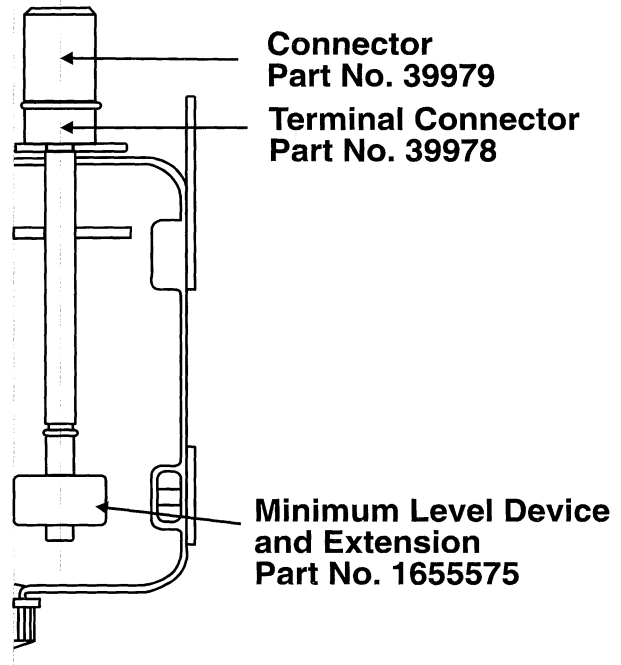
Pos.	Description	Part No.
1	Cylinder.	3050158
2	Cover.	
3	Gasket.	275037
4	Spring.	3191075
5	Rubber hose fitting.	3084297
6	'O' - Ring	61143
7	Filter - 10 Microns.	3130018
8	Magnetic cartridge.	3182002

Minimum Level Device:

FILTER DETAILS



MINIMUM LEVEL DEVICE



SECTION B - B