

# **ACCESSORIES - ACCESSORI**

## **SUBPLATES OF DIFFERENT TYPE - BASI VARIE**





# PACKING PLATE

TYPE EB6113

## BASE PER PRESSOSTATO

TIPO EB6113



66

Packing plate CETOP3 for pressure switch type EB6113. Weight= 1 Kg

Base di collegamento CETOP 3 con attacco multiplo per pressostato tipo EB6113

Peso = 1 Kg

NOTE: The plate is equipped of the following commercial parts:

N° 4 O-Rings 108 - 70 Sh

N° 3 Restrictor UNI 5925 - M4 x 8

N° 3 Balls Ø3

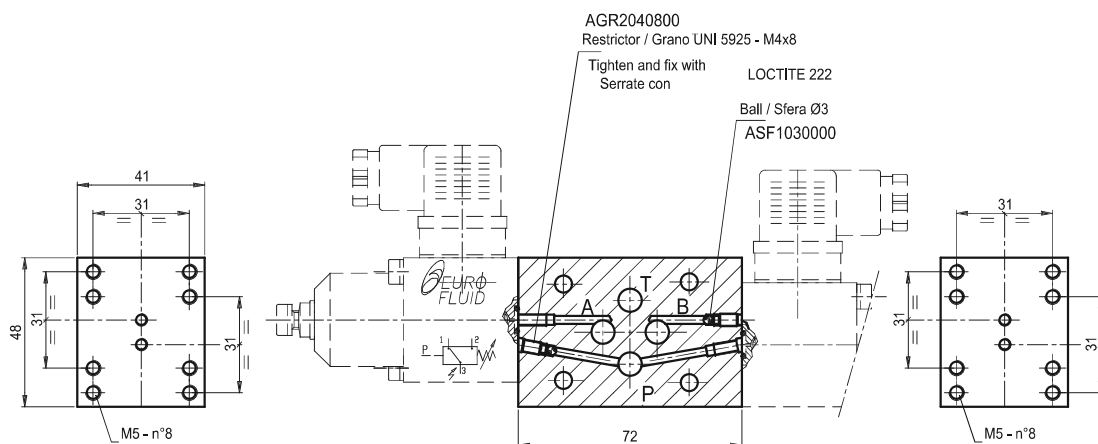
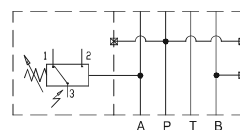
NOTA: La base viene fornita completa dei seguenti commerciali:

N° 4 O-Rings 108 - 70 Sh

N° 3 Grani UNI 5925 - M4 x 8

N° 3 Sfere Ø3

Hydraulic symbol  
schema idraulico



Ordering code / Esempio di ordinazione:

EUROFLUID

Module for use  
with pressure switches = B6

Base di collegamento  
per attacco pressostato =

Multiple connection = 11

Attacco multiplo =

EB6 11 3

CETOP 3



# PACKING PLATES FOR PRESSURE SWITCHES

TYPE EB6...3 AND EB6...5

67

## BASI DI COLLEGAMENTO PER ATTACCO PRESSOSTATO

TIPO EB6...3 E EB6...5

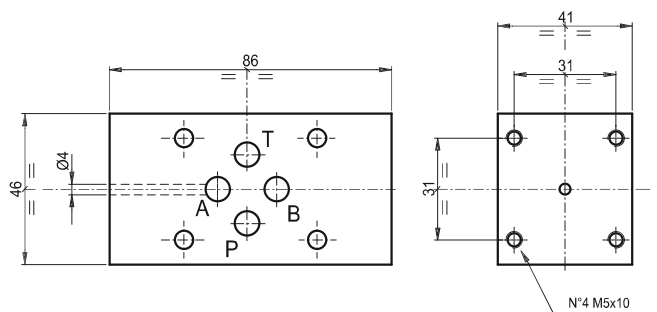
PACKING PLATES FOR PRESSURE SWITCHES  
BASI DI COLLEGAMENTO PER ATTACCO PRESSOSTATO

Packing plates CETOP3 for pressure switches type EB6...3

Base di collegamento CETOP 3 per attacco pressostato

Weight = 1 Kg

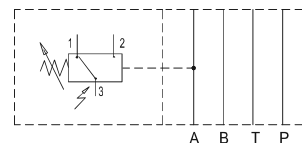
Peso= 1 Kg



Type Tipo	Ports Utilizzi
0	A e B
1	A
2	B
3	Side Lato B P e T Side Lato A
4	Side Lato B P
5	T Side Lato A
6	P e P

Ordering code:  
Esempio di ordinazione: **EB6** \* **3**  
EUROFLUID  
Module for use  
with pressure switches = B6  
Base di collegamento  
per attacco pressostato =  
CETOP 3  
0-1-.....6  
= See list / Vedere tabella

Hydraulic symbol / schema idraulico  
type / tipo EB613

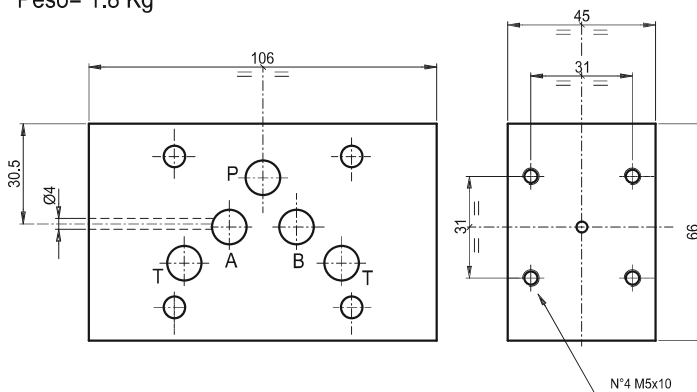


Packing plates CETOP5 for pressure switches type EB6...5

Base di collegamento CETOP 5 con attacco pressostato

Weight = 1.8 Kg

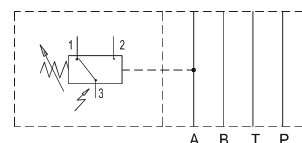
Peso= 1.8 Kg



Type Tipo	Ports Utilizzi
0	A e B
1	A
2	B
3	Side Lato B P e T Side Lato A
4	Side Lato B P
5	T Side Lato A
6	P e P

Ordering code:  
Esempio di ordinazione: **EB6** \* **5**  
EUROFLUID  
Module for use  
with pressure switches = B6  
Base di collegamento  
per attacco pressostato =  
CETOP 5  
0-1-.....6  
= See list / Vedere tabella

Hydraulic symbol / schema idraulico  
type / tipo EB615





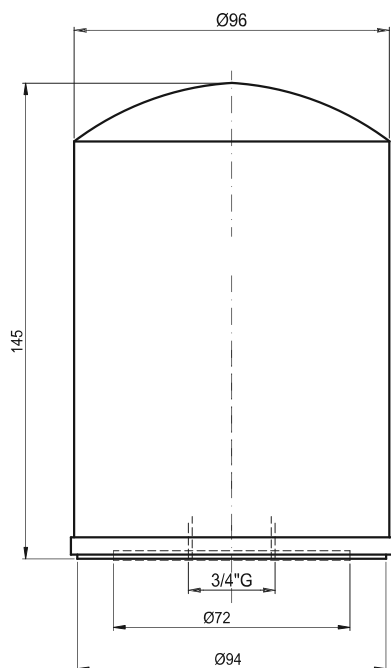
## COMPONENTI PER APPLICAZIONI FILTRO

69

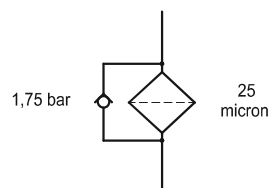
Spin-on filter cartridge with by-pass 1,75 bar / Cartuccia per filtro con by-pass 1,75 bar

Filtration 25 micron, Max flow: 60 l/min, Max pressure: 10 bar

Grado di filtraggio 25 micron, portata max: 60 l/min, pressione max: 10 bar



**SOFIMA**



Ordering code:

Esempio di ordinazione:

AF R 1 1

EUROFLUID

version with filter = AF

versione con filtro =

Spin-on filter + By-pass = R

Cartuccia con filtro + By-pass =

Max flow 60 l/min = 1

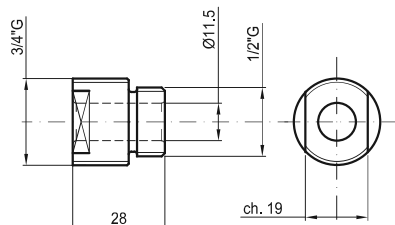
Portata max 60 l/min =

Filtration 25 micron = 1

Filtraggio 25 micron =

Hose 1/2"G - 3/4"G for spin-on filter cartridge

Raccordo 1/2"G - 3/4"G per attacco cartuccia filtro



Ordering code:

Esempio di ordinazione:

AF A 12/34

EUROFLUID

version with filter = AF

versione con filtro =

nipple / raccordo = A

version with/versione 1/2"G-3/4"G = 12/34

COMPONENTS FOR RETURNFILTER APPLICATION  
COMPONENTI PER APPLICAZIONI FILTRO



# SUBPLATE

TYPE EP1006 AND EP1008

70

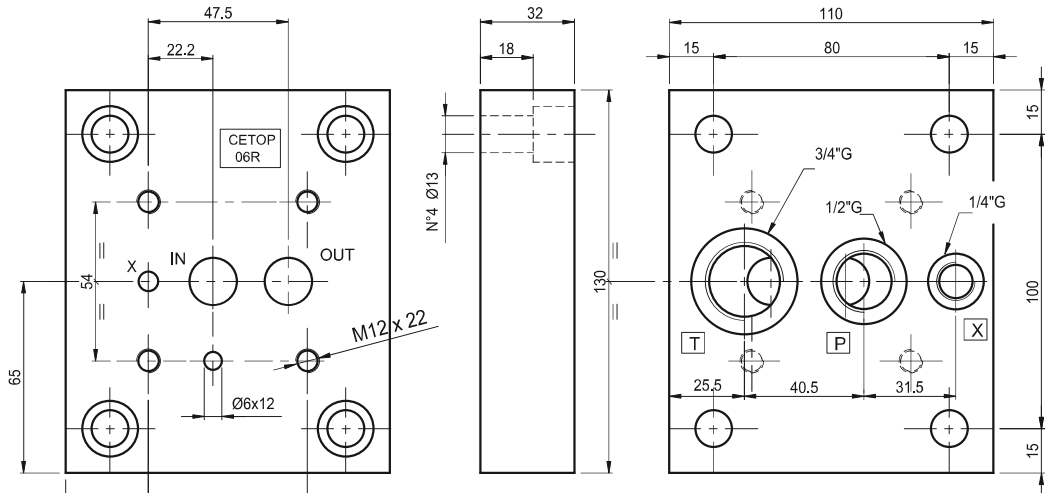
# BASE

TIPO EP1006 ED EP1008

SUBPLATE  
BASE

ISO/CETOP 06R subplate. P=1/2"G, T=3/4"G. Weight = 3 Kg

Base ISO/CETOP 06R. P=1/2"G, T=3/4"G. Peso = 3 Kg



Ordering code:

Esempio di ordinazione:

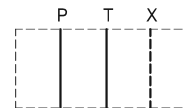
E P 10 06

EUROFLUID E

Subplate = P

Base =

Hydraulic symbol  
schema idraulico

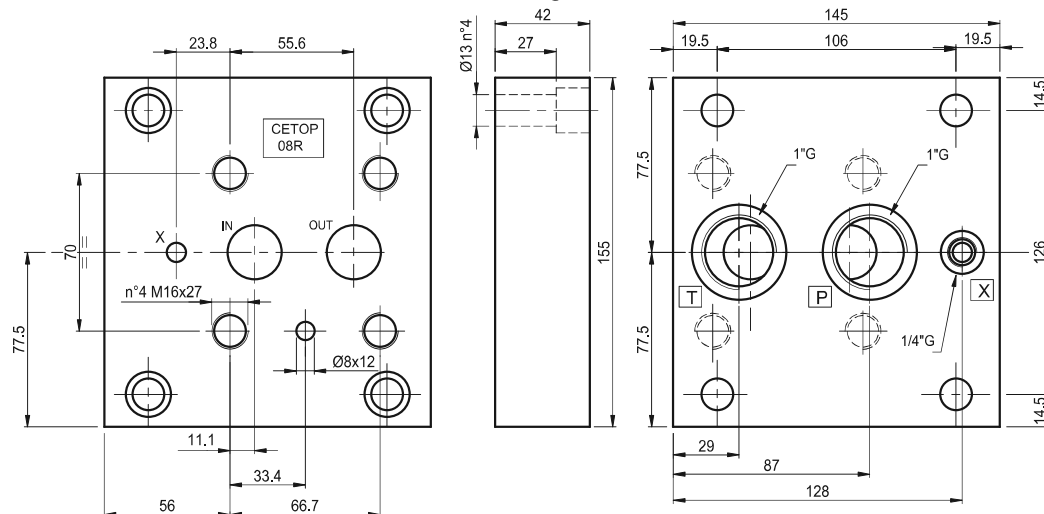


06 = Size / Grandezza ISO/CETOP 06

10 = Type / Tipo ISO/CETOP.....R

ISO/CETOP 08R subplate. P=1"G, T=1"G. Weight = 6.5 Kg

Base ISO/CETOP 08R. P-T da 1"G. Peso = 6.5 Kg



Ordering code:

Esempio di ordinazione:

E P 10 08

EUROFLUID E

Subplate = P

Base =

Hydraulic symbol  
schema idraulico



08 = Size / Grandezza ISO/CETOP 08

10 = Type / Tipo ISO/CETOP.....R

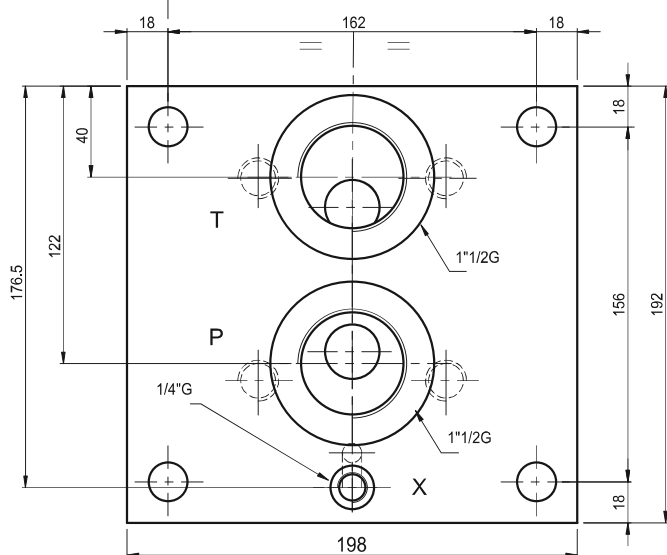
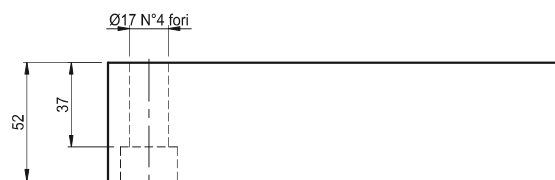
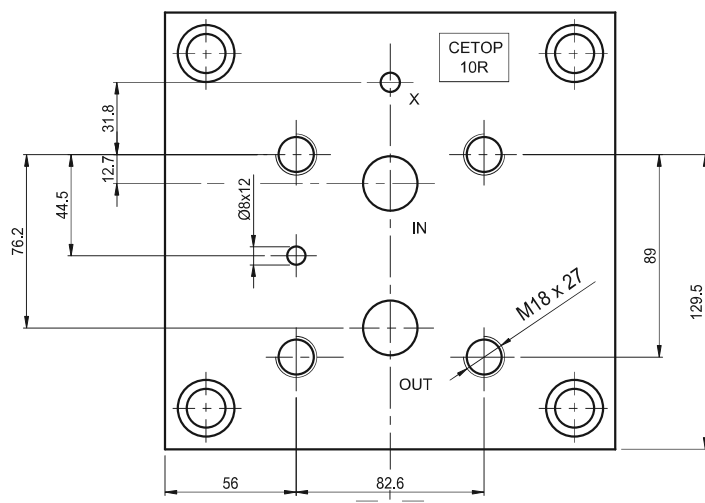
## BASE

TIPO EP1010

ISO/CETOP 10R subplate. P=1.1/2"G, T=1.1/2"G. Weight = 12.5 Kg

Base ISO/CETOP 10R. P-T da 1"1/2G. Peso = 12.5 Kg

**SUBPLATE  
BASE**



Hydraulic symbol  
schema idraulico

Ordering code/Esempio di ordinazione:

Ordine di ordinazione: 

E
---

P
---

10
----

10
----

EUROFLUID E — 

E
---

 — 10 = Size / Grandezza ISO/CETOP 10

Subplate = P — 

P
---

 — 10 = Type / Tipo ISO/CETOP.....R

Base = 

10
----



# SUBPLATE

TYPE EP2006 AND EP2008

72

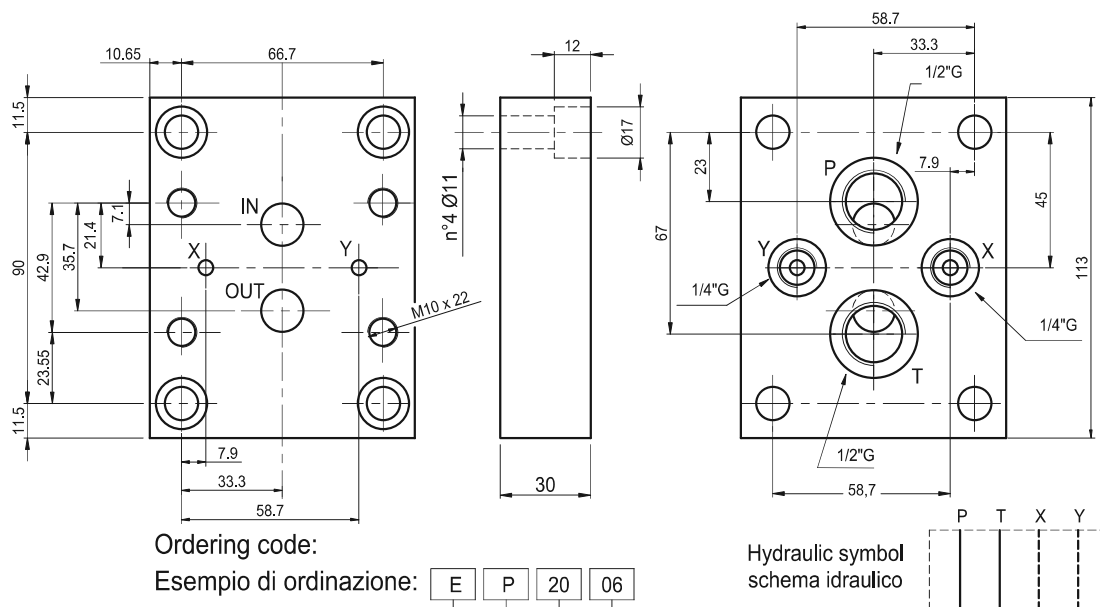
## BASE

TIPO EP2006 ED EP2008

SUBPLATE  
BASE

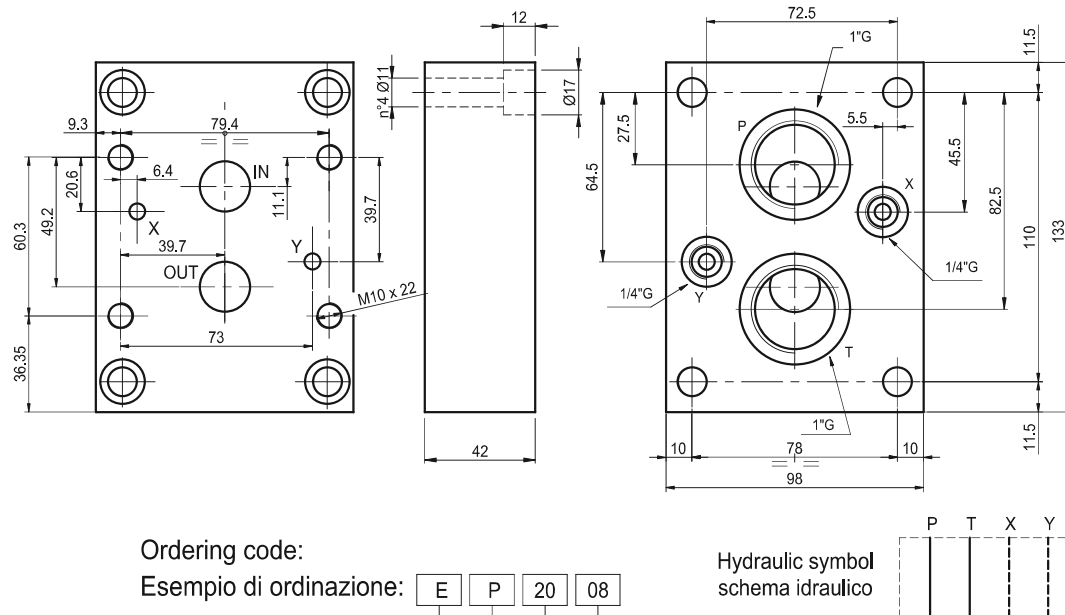
ISO/CETOP 06P subplate. P=1/2"G, T=1/2"G. Weight = 2 Kg

Base ISO/CETOP 06P. P-T da 1/2"G. Peso = 2 Kg



ISO/CETOP 08P subplate. P=1"G, T=1"G. Weight = 3,5 Kg

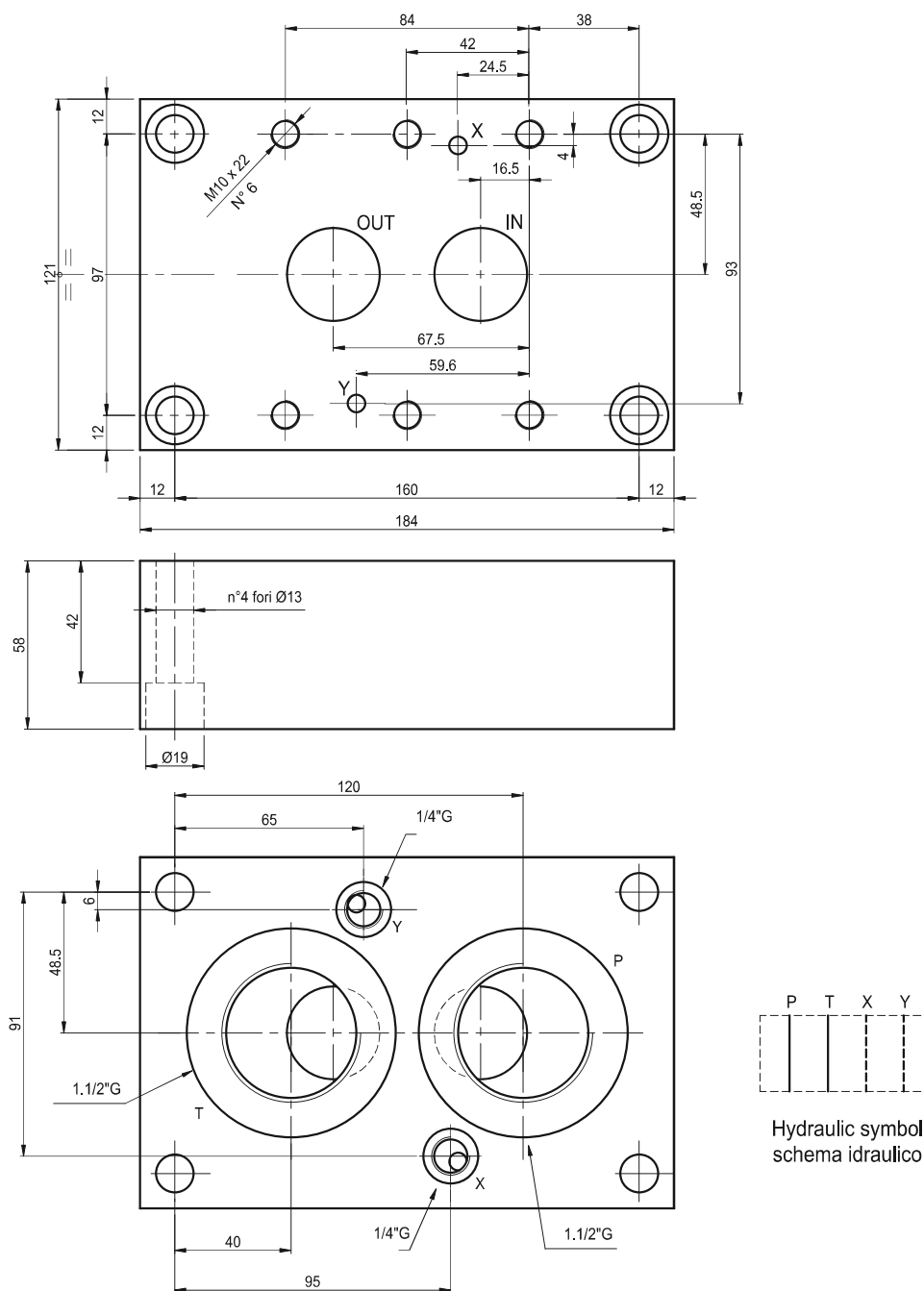
Base ISO/CETOP 08P. P-T da 1"G. Peso = 3,5 Kg





ISO/CETOP 10P subplate. P=1"1/2G, T=1"1/2G. Weight = 8.5 Kg

Base ISO/CETOP 10P. P-T da 1"1/2G. Peso = 8.5 Kg



Ordering code:

Esempio di ordinazione:

**E** **P** **20** **10**

EUROFLUID E 10 = Size / Grandezza ISO/CETOP 10

Subplate = P 20 = Type / Tipo ISO/CETOP .....P

Base =