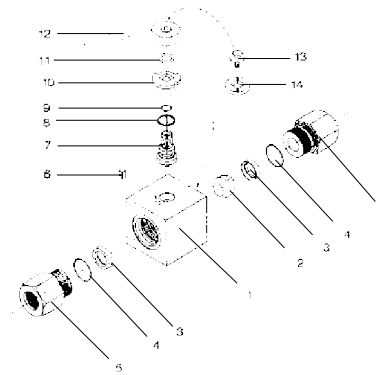
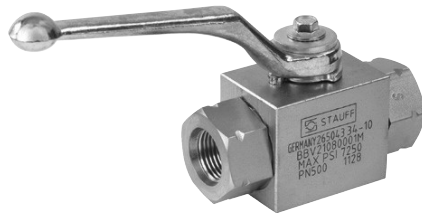


High-Pressure Block Body Ball Valve ■ Type BBV2



List of Components

No.	Qty.	Description
1	1	Housing
2	1	Ball
3*	2	Seat
4*	2	Connector O-Ring
5	2	Connector
6	1	Stop Pin
7	1	Stem
8*	1	Thrust Ring
9*	1	Stem O-Ring
10	1	Cam Plate
11	1	Snap Ring
12	1	Lever
13	1	Stem Screw
14	1	Flow Indicator

* Included in seal kit

Characteristics

Two-way high-pressure block body ball valves designed for use as on/off devices for hydraulic applications

Standard Construction

- Block body design for in-line assembly
- Supplied with off-set lever

Standard Materials

- Body: Carbon Steel, zinc/iron-plated
- Ball: Carbon Steel, hard chrome-plated
- Stem: Carbon Steel
- Lever: Zinc (STAUFF Sizes 02 to 08)
Aluminium (STAUFF Size 10)
Carbon Steel (STAUFF Sizes 12 to 24R)
- Ball seat: Delrin® (POM)
- O-rings: FPM (Viton®)

Standard Connections Styles / Sizes

- Female BSP thread (DIN ISO 228) >G 1-1/2 BSP
- Female NPT thread (ANSI B1.20.1) >1-1/2–11-1/2 NPT
- Female UN/UNF thread (SAE J 514) >1-7/8–12 UN (1-1/2" SAE)
- Male O-Ring Face Seal Connection >1-11/16–12 UN
- 24° cone connection (DIN 2353); Light Series >42L
- 24° cone connection (DIN 2353); Heavy Series >38S

Pressure Range

- Pressure range: up to 500 bar / 7250 PSI (depending on size and material combination of the ball valve)

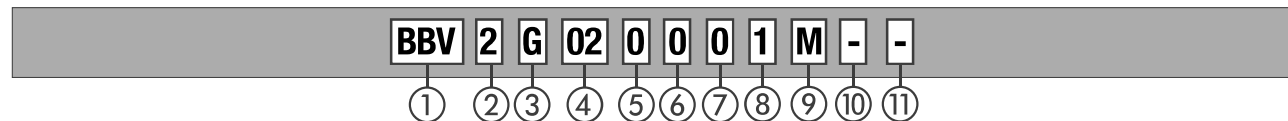
Temperature Range

- Operating temperature range:
-20 °C ... +100 °C / -4 °F ... +212 °F

Options / Accessories

- Alternative lever designs/materials (see page F92)
- Locking devices (see pages F93-95)
- Actuator packages (see page F96)
- Limit switches (see page F96)
- Additional assembling threads / holes (see page F97)
- Stainless Steel body
- Stainless Steel ball and stem
- Special ball seat and O-ring materials available for lower/higher temperatures and more aggressive media

Order Codes



① Type

High-Pressure Block Body Ball Valve **BBV**

② Number of Ports

Two Ports (Two-Way Ball Valve) **2**

③ Connection Style

Female BSP Thread (DIN ISO 228) **G**
 Female NPT Thread (ANSI B1.20.1) **0**
 Female UN/UNF Thread (SAE J 514) **1**
 Male O-Ring Face Seal Connection **B**
 24° Cone Connection (Light / Heavy Series)
DN04 DN06 DN08 DN10 DN13 DN16 DN20 DN25

Please consult STAUFF for alternative connection styles.

④ Connection Size

STAUFF Size (according to dimension table)
for connection styles G, 0, 1 and B:
02 04 06 08 10 12 16 20R 24R
 Tube Size (according to dimension table)
for 24° Cone Connection (Light Series):
06L 08L 10L 12L 15L 18L 22L 28L 35L 42L
 Tube Size (according to dimension table)
for 24° Cone Connection (Heavy Series):
06S 08S 10S 12S 14S 16S 20S 25S 30S 38S

Please consult STAUFF for alternative connection sizes.

⑤ Body Material / Surface Finishing

Carbon Steel, zinc/iron-plated **0**
 Stainless Steel V4A (AISI 316Ti) **1**

Alternative materials / surface finishings are available upon request. Consult STAUFF for further information.

⑥ Ball / Stem Material

Ball: Carbon Steel, hard chrome-plated **0**
 Stem: Carbon Steel **0**
 Ball / Stem: Stainless Steel V4A (AISI 316Ti) **1**

Alternative materials / surface finishings are available upon request. Consult STAUFF for further information.

⑦ Ball Seat Material

Delrin® (POM) **0**

Alternative materials are available upon request. Consult STAUFF for further information.

⑧ O-Ring Material

NBR (Buna-N®) **0**
 FPM (Viton®) **1**
 EPDM **3**

Alternative materials are available upon request. Consult STAUFF for further information.

⑨ Manufacturing Code

Manufacturing code for all connection styles (except Female NPT Thread) **M**
 Manufacturing code (only for Female NPT Thread) **K**
 Manufacturing code for high-pressure version of connection styles 0 and 1 (STAUFF Size 16) **H**

⑩ Lever Options

Supplied with standard lever (according to table) **-**
 Supplied without lever **-0**

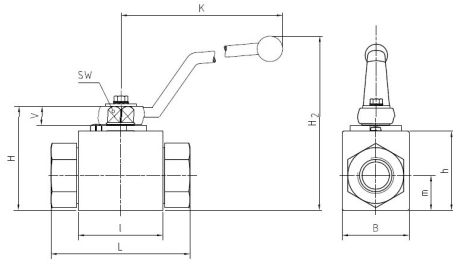
Alternative levers can be ordered separately. Please see page F92 for further information.

⑪ Accessories / Options

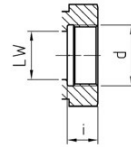
Supplied without accessories **-**
 Supplied with Locking Device LD1 **-LD1**
 Supplied with Locking Device LD2 **-LD2**
 Supplied with Locking Device LD3 **-LD3**
 Supplied with Locking Device LD4 **-LD4**
 Supplied with Double-Acting Pneumatic Actuator (Please add size **) **-EDA****
 Supplied with Single-Acting Pneumatic Actuator (Please add size **) **-ESA****

Please see page F93-F97 for further information and options.

High-Pressure Block Body Ball Valve - Type BBV2 Female BSP Thread (DIN ISO 228)



Female BSP Thread (DIN ISO 228)



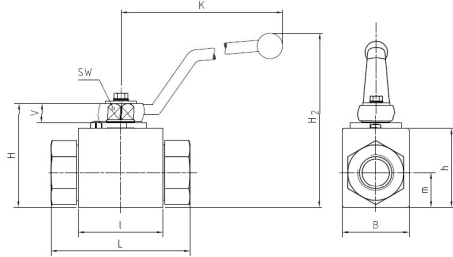
When ordering the standard option as indicated in the table below, the following materials will be supplied:

- Body, ball and stem: Carbon Steel
- Lever: Zinc (STAUFF Sizes 02 to 08)
Aluminium (STAUFF Size 10)
Carbon Steel (STAUFF Sizes 12 to 24R)
- Ball seat: Delrin® (POM)
- O-rings: FPM (Viton®)

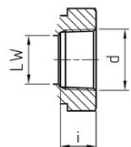
STAUFF Size	Thread Size d	Nominal Size DN	Dimensions (mm/in)											Nom. Pressure (bar/psi)	Weight (kg/lbs)	Order Codes (Standard Option)	
			LW	L	I	B	H	h	m	V	SW	K	i				H2
02	G 1/8 BSP	4	5 .20	69 2.70	40 1.57	26 1.02	47 1.84	33 1.29	13,5 .53	11 .43	9 .35	115 4.50	10 .39	82 3.23	500 7250	0,41 .90	BBV2G020001M
04	G 1/4 BSP	6	6 .23	69 2.70	40 1.57	26 1.02	47 1.84	33 1.29	13,5 .53	11 .43	9 .35	115 4.50	14 .55	82 3.23	500 7250	0,40 .88	BBV2G040001M
06	G 3/8 BSP	10	10 .39	72 2.82	43 1.68	32 1.25	52 2.04	38 1.49	17,5 .69	11 .43	9 .35	115 4.50	14 .55	87 3.43	500 7250	0,54 1.19	BBV2G060001M
08	G 1/2 BSP	13	13 .51	83 3.25	48 1.88	35 1.37	54 2.11	40 1.57	19 .74	11 .43	9 .35	115 4.50	16,3 .64	89 3.50	500 7250	0,65 1.43	BBV2G080001M
10	G 5/8 BSP	16	15 .59	83 3.25	48 1.88	38 1.49	63 2.47	46 1.80	19 .74	13 .51	12 .47	160 6.26	16 .63	106 4.17	420 6000	0,70 1.54	BBV2G100001M
12	G 3/4 BSP	20	20 .78	95 3.72	62 2.43	49 1.92	75 2.94	57 2.23	24,5 .96	14 .55	14 .55	170 6.69	18 .70	126 4.96	420 6000	1,50 3.31	BBV2G120001M
16	G 1 BSP	25	25 .98	113 4.42	66 2.58	58 2.27	83 3.25	65 2.55	29,5 1.16	14 .55	14 .55	170 6.69	20 .78	134 5.28	315 4500	2,20 4.85	BBV2G160001M
16	G 1 BSP	25	25 .98	113 4.42	74 2.91	70 2.76	88 3.46	70 2.76	34,5 1.36	14 .55	14 .55	170 6.69	20 .78	139 5.47	420 6000	3,10 6.83	BBV2G160001H
20R	G 1-1/4 BSP	25/32	25 .98	120 4.70	66 2.58	58 2.27	83 3.25	65 2.55	29,5 1.16	14 .55	14 .55	170 6.69	22 .86	134 5.28	315 4500	2,30 5.07	BBV2G20R0001M
24R	G 1-1/2 BSP	25/40	25 .98	130 5.09	66 2.58	58 2.27	83 3.25	65 2.55	29,5 1.16	14 .55	14 .55	170 6.69	24 .94	134 5.28	250 3600	2,60 5.73	BBV2G24R0001M

Please note the pressure ratings of the tube connections.

High-Pressure Block Body Ball Valve - Type BBV2 Female NPT Thread (ANSI B1.20.1)



Female NPT Thread (ANSI B1.20.1)



When ordering the standard option as indicated in the table below, the following materials will be supplied:

- Body, ball and stem: Carbon Steel
- Lever: Zinc (STAUFF Sizes 02 to 08)
Carbon Steel (STAUFF Sizes 12 to 24R)
- Ball seat: Delrin® (POM)
- O-rings: FPM (Viton®)

STAUFF Size	Thread Size d	Nominal Size DN	Dimensions (mm/in)											Nom. Pressure (bar/psi)	Weight (kg/lbs)	Order Codes (Standard Option)	
			LW	L	I	B	H	h	m	V	SW	K	i				H2
02	1/8-27 NPT	4	5 .20	69 2.70	40 1.57	26 1.02	47 1.84	33 1.29	13,5 .53	11 .43	9 .35	115 4.50	10,5 .41	82 3.23	500 7250	0,30 .66	BBV20020001K
04	1/4-18 NPT	6	6 .23	69 2.70	40 1.57	26 1.02	47 1.84	33 1.29	13,5 .53	11 .43	9 .35	115 4.50	13,7 .54	82 3.23	500 7250	0,40 .88	BBV20040001K
06	3/8-18 NPT	10	10 .39	72 2.82	43 1.68	32 1.25	52 2.04	38 1.49	17,5 .69	11 .43	9 .35	115 4.50	13,5 .53	87 3.43	500 7250	0,50 1.10	BBV20060001K
08	1/2-14 NPT	13	13 .51	83 3.25	48 1.88	35 1.37	54 2.11	40 1.57	19 .74	11 .43	9 .35	115 4.50	17 .67	89 3.50	500 7250	0,75 1.65	BBV20080001K
12	3/4-14 NPT	20	20 .78	95 3.72	62 2.43	49 1.92	75 2.94	57 2.23	24,5 .96	14 .55	14 .55	170 6.69	18,3 .72	126 4.96	420 6000	1,63 3.57	BBV20120001K
16	1-11-1/2 NPT	25	25 .98	113 4.42	66 2.58	58 2.27	83 3.25	65 2.55	29,5 1.16	14 .55	14 .55	170 6.69	21,6 .85	134 5.28	315 4500	2,30 5.06	BBV20160001K
16	1-11-1/2 NPT	25	25 .98	113 4.42	74 2.91	70 2.76	88 3.46	70 2.76	34,5 1.36	14 .55	14 .55	170 6.69	20 .78	139 5.47	420 6000	3,16 6.97	BBV20160001H
20R	1-1/4-11-1/2 NPT	25/32	25 .98	120 4.70	66 2.58	58 2.27	83 3.25	65 2.55	29,5 1.16	14 .55	14 .55	170 6.69	22,1 .87	134 5.28	315 4500	2,51 5.52	BBV2020R0001K
24R	1-1/2-11-1/2 NPT	25/40	25 .98	130 5.09	66 2.58	58 2.27	83 3.25	65 2.55	29,5 1.16	14 .55	14 .55	170 6.69	22,1 .87	134 5.28	250 3600	2,70 5.94	BBV2024R0001K

Please note the pressure ratings of the tube connections.