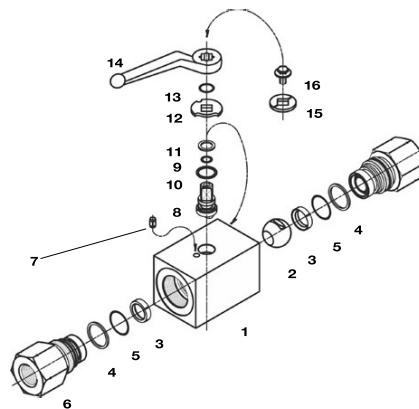


High-Pressure 800 bar / 12000 PSI Block Body Ball Valve ■ Type HBV2



List of Components

No.	Qty.	Description
1	1	Body
2	1	Ball
3*	2	Seat
4*	2	Connector O-Ring
5*	2	Pipe Back-up Ring
6	2	Connector
7	1	Stop Pin
8	1	Stem
9*	1	Thrust Ring
10*	1	Stem O-Ring
11*	1	Pipe Back-up
12	1	Cam Plate
13	1	Snap Ring
14	1	Handle
15	1	Flow Indicator
16	1	Stem Screw

* Included in seal kit

Characteristics

Two-way high-pressure block body ball valves designed for use as on/off devices for hydraulic applications (for pressures up to 800 bar / 12000 PSI)

Standard Construction

- Block body design for in-line assembly
- Supplied with lever

Standard Materials

- Body: Carbon Steel, zinc/iron-plated
- Ball: Carbon Steel, hard chrome-plated
- Stem: Carbon Steel
- Lever: Carbon Steel
- Ball seat: POM encased
- O-rings: FPM (Viton®)

Standard Connections Styles / Sizes

- Female NPT thread (ANSI B1.20.1) >1–1-1/2 NPT
- 24° cone connection (DIN 2353); Heavy Series >30S

Pressure Range

- Pressure range: up to 800 bar / 12000 PSI (depending on size and material combination of the ball valve)

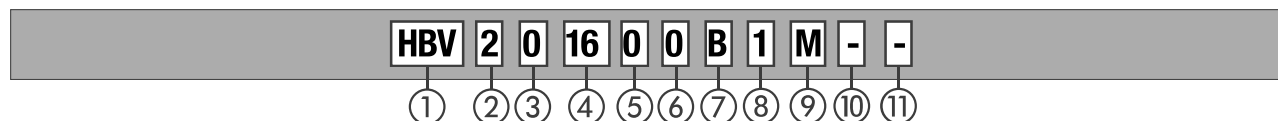
Temperature Range

- Operating temperature range: -20 °C ... +100 °C / -4 °F ... +212 °F

Options / Accessories

- Alternative lever designs/materials (see page F92)
- Locking devices (see pages F93-95)
- Actuator packages (see page F96)
- Limit switches (see page F96)
- Additional assembling threads / holes (see page F97)
- Stainless Steel body
- Stainless Steel ball and stem
- Special ball seat and O-ring materials available for lower/higher temperatures and more aggressive media

Order Codes



① Type

High-Pressure Block Body Ball Valve **HBV**

② Number of Ports

Two Ports (Two-Way Ball Valve) **2**

③ Connection Style

Female NPT Thread (ANSI B1.20.1) **0**
 24° Cone Connection (Heavy Series)
DN04 DN06 DN08 DN10 DN13 DN16 DN20 DN25

Please consult STAUFF for alternative connection styles.

④ Connection Size

STAUFF Size (according to dimension table) for connection styles G, 0, 1 and B:
04 06 08 12 16

Tube Size (according to dimension table) for 24° Cone Connection (Heavy Series):
08S 10S 12S 14S 16S 20S 25S 30S

Please consult STAUFF for alternative connection sizes.

⑤ Body Material / Surface Finishing

Carbon Steel, zinc/iron-plated **0**
 Stainless Steel V4A (AISI 316Ti) **1**

Alternative materials / surface finishings are available upon request. Consult STAUFF for further information.

⑥ Ball / Stem Material

Ball: Carbon Steel, hard chrome-plated **0**
 Stem: Carbon Steel
 Ball / Stem: Stainless Steel V4A (AISI 316Ti) **1**

Alternative materials / surface finishings are available upon request. Consult STAUFF for further information.

⑦ Ball Seat Material

POM encased **B**

Alternative materials are available upon request. Consult STAUFF for further information.

⑧ O-Ring Material

NBR (Buna-N®) **0**
 FPM (Viton®) **1**

Alternative materials are available upon request. Consult STAUFF for further information.

⑨ Manufacturing Code

Manufacturing code for all connection styles **M**

⑩ Lever Options

Supplied with standard lever (according to table) **-**
 Supplied without lever **-0**

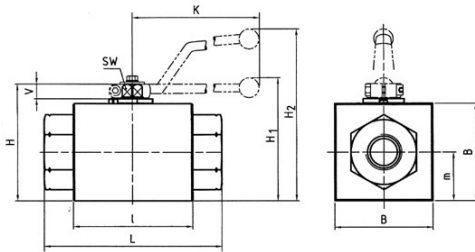
Alternative levers can be ordered separately. Please see page F92 for further information.

⑪ Accessories / Options

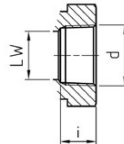
Supplied without accessories **-**
 Supplied with Locking Device LD1 **-LD1**
 Supplied with Locking Device LD4 **-LD4**
 Supplied with Double-Acting Pneumatic Actuator (Please add size ***) **-EDA****
 Supplied with Single-Acting Pneumatic Actuator (Please add size ***) **-ESA****

Please see page F93-F97 for further information and options.

High-Pressure 800 bar / 12000 PSI Block Body Ball Valve - Type HBV2 Female NPT Thread (ANSI B1.20.1)



Female NPT Thread (ANSI B1.20.1)



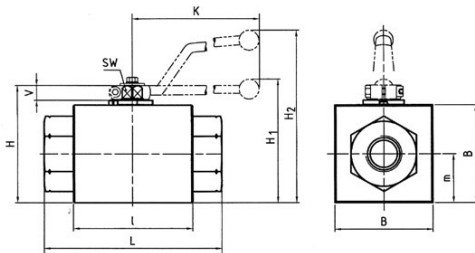
When ordering the standard option as indicated in the table below, the following materials will be supplied:

- Body, ball and stem: Carbon Steel
- Lever: Zinc
- Ball seat: POM encased
- O-rings: FPM (Viton®)

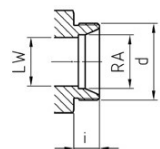
STAUFF Size	Thread Size d	Nominal Size DN	Dimensions (mm/in)													Nom. Pressure (bar/PSI)	Weight (kg/lbs)	Order Codes (Standard Option)
			LW	L	I	B	H	m	V	SW	K	i	H1	H2				
04	1/4-18 NPT	6	6	130	76	50	64	25	11	9	115	13,7		99	800	1,92	HBV200400B1M	
			.39	8.44	4.94	3.25	4.16	1.62	.71	.58	7.47	0.89	6.43	12000	4.22			
06	3/8-18 NPT	10	13	130	76	50	64	25	11	9	115	13,5		99	800	1,85	HBV200600B1M	
			.84	8.44	4.94	3.25	4.16	1.62	.71	.58	7.47	0.88	6.43	12000	4.07			
08	1/2-14 NPT	13	13	130	76	50	64	25	11	9	115	17		99	800	1,79	HBV200800B1M	
			.84	8.44	4.94	3.25	4.16	1.62	.71	.58	7.47	1.10	6.43	12000	3.93			
12	3/4-14 NPT	20	20	161	111	90	108	45	14	14	200	18,3	112		800	7,83	HBV201200B1M	
			1.30	10.45	7.21	5.84	7.01	2.92	.91	.91	12.99	1.19	7.27	12000	17.23			
16	1-11-1/2 NPT	25	25	164	111	90	108	45	14	14	200	21,6	112		800	7,68	HBV201600B1M	
			1.62	10.65	7.21	5.84	7.01	2.92	.91	.91	12.99	1.40	7.27	12000	16.90			

Please note the pressure ratings of the tube connections.

High-Pressure 800 bar / 12000 PSI Block Body Ball Valve - Type HBV2 24° Cone Connection - Heavy Series (DIN 2353 / ISO 8434-1)



24° Cone Connection (DIN 2353 / ISO 8434-1)



When ordering the standard option as indicated in the table below, the following materials will be supplied:

- Body, ball and stem: Carbon Steel
- Lever: Zinc
- Ball seat: POM encased
- O-rings: FPM (Viton®)

Hex nuts and cutting rings are not included in delivery.

STAUFF Size	Tube/Thread Size d	Nominal Size DN	Dimensions (mm/in)													Nom. Pressure (bar/PSI)	Weight (kg/lbs)	Order Codes (Standard Option)
			RA	LW	L	I	B	H	m	V	SW	K	i	H1	H2			
02	08S / M16 x 1,5	4	8	5	110	76	50	64	25	11	9	115	12		99	800	1,60	HBV2DN0408S00B1M
			.31	.20	4.33	2.99	1.97	2.52	.98	.43	.35	4.53	.47	6.43	12000	3.52		
04	10S / M18 x 1,5	6	10	6	114	76	50	64	25	11	9	115	12		99	800	1,60	HBV2DN0610S00B1M
			.39	.24	4.49	2.99	1.97	2.52	.98	.43	.35	4.53	.47	6.43	12000	3.52		
05	12S / M20 x 1,5	8	12	8	114	76	50	64	25	11	9	115	12		99	800	1,64	HBV2DN0812S00B1M
			.47	.31	4.49	2.99	1.97	2.52	.98	.43	.35	4.53	.47	6.43	12000	3.61		
06	14S / M22 x 1,5	10	14	13	114	76	50	64	25	11	9	115	14		99	800	1,56	HBV2DN1014S00B1M
			.55	.51	4.49	2.99	1.97	2.52	.98	.43	.35	4.53	.55	6.43	12000	3.43		
08	16S / M24 x 1,5	13	16	13	114	76	50	64	25	11	9	115	14		99	800	1,58	HBV2DN1316S00B1M
			.63	.51	4.49	2.99	1.97	2.52	.98	.43	.35	4.53	.55	6.43	12000	3.48		
08	20S / M30 x 2	13	20	13	118	76	50	64	25	11	9	115	16		99	800	1,63	HBV2DN1320S00B1M
			.79	.51	4.65	2.99	1.97	2.52	.98	.43	.35	4.53	.63	6.43	12000	3.59		
12	25S / M36 x 2	20	25	20	162	111	90	108	45	14	14	200	18	112		800	7,31	HBV2DN2025S00B1M
			.98	.79	6.38	4.37	3.54	4.25	1.77	.55	.55	7.87	.71	7.27	12000	16.08		
16	30S / M42 x 2	25	30	25	166	111	90	108	45	14	14	200	20	112		800	7,40	HBV2DN2530S00B1M
			1.18	.98	6.54	4.37	3.54	4.25	1.77	.55	.55	7.87	.79	7.27	12000	16.28		

Please note the pressure ratings of the tube connections.