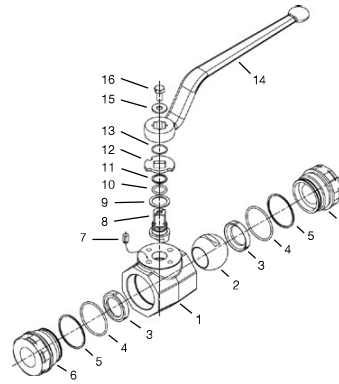


High-Pressure Forged Body Ball Valve ■ Type FBV2



List of Components

No.	Qty.	Description
1	1	Body
2	1	Ball
3*	2	Seat
4*	2	Connector O-Ring
5*	2	Connector Back-Up Ring
6	2	Connector
7	1	Stop Pin
8	1	Stem
9*	1	Thrust Ring
10*	1	Stem O-Ring
11*	1	Stem Back-Up Ring
12	1	Cam Plate
13	1	Snap Ring
14	1	Handle
15	1	Washer
16	1	Stem Bolt

* Included in seal kit

Characteristics

Two-way high-pressure forged body ball valves designed for use as on/off devices for hydraulic applications

Standard Construction

- Forged body design for in-line assembly
- Supplied with off-set lever

Standard Materials

- Body: Carbon Steel, zinc/iron-plated
- Ball: Carbon Steel, hard chrome-plated
- Stem: Carbon Steel
- Lever: Carbon Steel
- Ball seat: Delrin® (POM)
- O-rings: FPM (Viton®)

Standard Connections Styles / Sizes

- Female BSP thread (DIN ISO 228) >G 2 BSP
- Female NPT thread (ANSI B1.20.1) >2-11-1/2 NPT
- Female UN/UNF thread (SAE J 514) >2-1/2-12 UN (2" SAE)
- Male O-Ring Face Seal Connection >2-12 UN
- 24° cone connection (DIN 2353); Light Series >42L
- 24° cone connection (DIN 2353); Heavy Series >38S

Pressure Range

- Pressure range: up to 420 bar / 6000 PSI (depending on size and material combination of the ball valve)

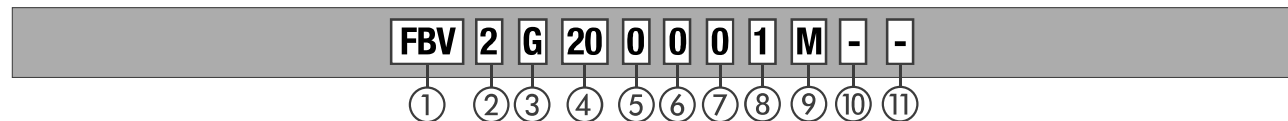
Temperature Range

- Operating temperature range: -20 °C ... +100 °C / -4 °F ... + 212 °F

Options / Accessories

- Alternative lever designs/materials (see page F92)
- Locking devices (see pages F93-95)
- Actuator packages (see page F96)
- Limit switches (see page F96)
- Additional assembling threads / holes (see page F97)
- Stainless Steel body
- Stainless Steel ball and stem
- Special ball seat and O-ring materials available for lower/higher temperatures and more aggressive media

Order Codes



① Type

High-Pressure Forged Body Ball Valve **FBV**

② Number of Ports

Two Ports (Two-Way Ball Valve) **2**

③ Connection Style

Female BSP Thread (DIN ISO 228) **G**
 Female NPT Thread (ANSI B1.20.1) **0**
 Female UN/UNF Thread (SAE J 514) **1**
 Male O-Ring Face Seal Connection **B**
 24° Cone Connection (Light / Heavy Series) **DN32**
 24° Cone Connection (only Light Series) **DN40**

Please consult STAUFF for alternative connection styles.

④ Connection Size

STAUFF Size (according to dimension table) for connection styles G, 0, 1 and B:

20	24	32
----	----	----

 Tube Size (according to dimension table) for 24° Cone Connection (Light Series): **35L**
 Tube Size (according to dimension table) for 24° Cone Connection (Light Series): **42L**
 Tube Size (according to dimension table) for 24° Cone Connection (Heavy Series): **38S**

Please consult STAUFF for alternative connection sizes.

⑤ Body Material / Surface Finishing

Carbon Steel, zinc/iron-plated **0**
 Stainless Steel V4A (AISI 316Ti) **1**

Alternative materials / surface finishings are available upon request. Consult STAUFF for further information.

⑥ Ball / Stem Material

Ball: Carbon Steel, hard chrome-plated **0**
 Stem: Carbon Steel **0**
 Ball / Stem: Stainless Steel V4A (AISI 316Ti) **1**

Alternative materials / surface finishings are available upon request. Consult STAUFF for further information.

⑦ Ball Seat Material

Delrin® (POM) **0**

Alternative materials are available upon request. Consult STAUFF for further information.

⑧ O-Ring Material

NBR (Buna-N®) **0**
 FPM (Viton®) **1**

Alternative materials are available upon request. Consult STAUFF for further information.

⑨ Manufacturing Code

Manufacturing code for all connection styles **M**

⑩ Lever Options

Supplied with standard lever (according to table) **-**
 Supplied without lever **-0**

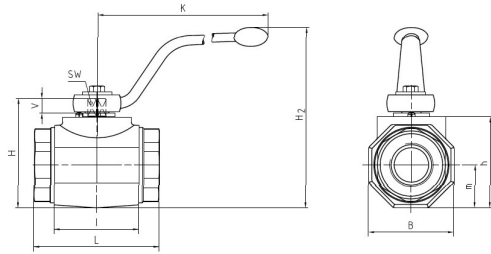
Alternative levers can be ordered separately. Please see page F92 for further information.

⑪ Accessories / Options

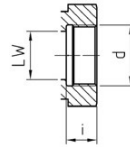
Supplied without accessories **-**
 Supplied with Locking Device LD1 **-LD1**
 Supplied with Locking Device LD2 **-LD2**
 Supplied with Locking Device LD3 **-LD3**
 Supplied with Locking Device LD4 **-LD4**
 Supplied with Locking Device LD6 **-LD6**
 Supplied with Double-Acting Pneumatic Actuator (Please add size ***) **-EDA****
 Supplied with Single-Acting Pneumatic Actuator (Please add size ***) **-ESA****

Please see page F93-F97 for further information and options.

High-Pressure Forged Body Ball Valve ■ Type FBV2 Female BSP Thread (DIN ISO 228)



Female BSP Thread (DIN ISO 228)



When ordering the standard option as indicated in the table below, the following materials will be supplied:

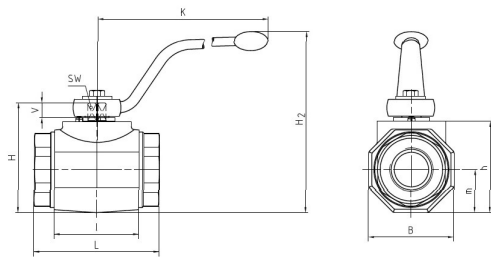
- Body, ball and stem: Carbon Steel
- Lever: Carbon Steel
- Ball seat: Delrin® (POM)
- O-rings: FPM (Viton®)

Dimensions of stainless steel ball valves may vary!

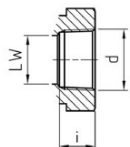
STAUFF Size	Thread Size d	Nominal Size DN	Dimensions (mm/in)													Nom. Pressure (bar/psi)	Weight (kg/lbs)	Order Codes (Standard Option)
			LW	L	I	B	H	h	m	V	SW	K	i	H2				
20	G 1-1/4 BSP	32	32	111	80	81	107	86	40,5	16,5	17	306	22	171	420	3,47	FBV2G200001M	
			1,26	4,37	3,15	3,19	4,21	3,39	1,59	,65	,67	12,05	,87	6,73	6000	7,63		
24	G 1-1/2 BSP	40	38	130	85	100	124	103	50	16,5	17	306	24	188	420	5,67	FBV2G240001M	
			1,50	5,12	3,35	3,94	4,88	4,06	1,97	,65	,67	12,05	,94	7,40	6000	12,47		
32	G 2 BSP	50	48	140	100	118	138	117	59	16,5	17	306	26	202	420	8,14	FBV2G320001M	
			1,89	5,51	3,94	4,65	2,43	4,61	2,32	,65	,67	12,05	1,02	7,96	6000	17,91		

Please note the pressure ratings of the tube connections.

High-Pressure Forged Body Ball Valve ■ Type FBV2 Female NPT Thread (ANSI B1.20.1)



Female NPT Thread (ANSI B1.20.1)



When ordering the standard option as indicated in the table below, the following materials will be supplied:

- Body, ball and stem: Carbon Steel
- Lever: Carbon Steel
- Ball seat: Delrin® (POM)
- O-rings: FPM (Viton®)

Dimensions of stainless steel ball valves may vary!

STAUFF Size	Thread Size d	Nominal Size DN	Dimensions (mm/in)													Nom. Pressure (bar/psi)	Weight (kg/lbs)	Order Codes (Standard Option)
			LW	L	I	B	H	h	m	V	SW	K	i	H2				
20	1-1/4-11-1/2 NPT	32	32	111	80	81	107	86	40,5	16,5	17	306	22	171	420	3,47	FBV20200001M	
			1,26	4,37	3,15	3,19	4,21	3,39	1,59	,65	,67	12,05	,87	6,73	6000	7,63		
24	1-1/2-11-1/2 NPT	40	38	130	85	100	124	103	50	16,5	17	306	24	188	420	5,67	FBV20240001M	
			1,50	5,12	3,35	3,94	4,88	4,06	1,97	,65	,67	12,05	,94	7,40	6000	12,47		
32	2-11-1/2 NPT	50	48	140	100	118	138	117	59	16,5	17	306	26	202	420	8,14	FBV20320001M	
			1,89	5,51	3,94	4,65	2,43	4,61	2,32	,65	,67	12,05	1,02	7,96	6000	17,91		

Please note the pressure ratings of the tube connections.